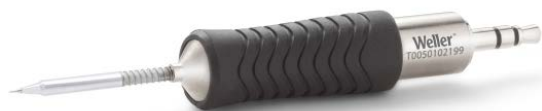


RTP 002 S MS

Product no.: T0050102199



Benefits

- › Short tip-to-grip distance: Close working distance to the component for higher precision and maximum control
- › MIL-SPC / IPC standard (potential free): Reduces risk of damage to sensitive micro components and workpieces. No rework, lower total cost of ownership
- › Active tip technology: Fastest heat-up and recovery time, sensor close to the solder tip, excellent heat transfer. No downtime, continuing workflow, excellent results
- › Digital tool for data storage: Motion activated usage sensor for energy control and data storage
- › Patented tip & grip design: Only soldering tip on the market which can be changed without a tool. 20% faster change than leading competitors.
- › One intelligent platform: One station for all active tips & tools. WX platform meets all operational hand soldering needs.

**Test Equipment
Depot**
1-800-517-8431

99 Washington Street
Melrose, MA 02176
Phone 781-665-1400
Toll Free 1-800-517-8431



Visit us at www.TestEquipmentDepot.com

**Technical Data**

Tip shape	Chisel shape
Tip type	MS
Width in mm	0.2
Width in inches	0.008
Thickness in mm	0.1
Thickness in inches	0.004
Length mm	16.3
Length inches	0.642
Power	40 W
Packaging unit	1