

Self-Describing DC Voltage Input Sensor (SD-VOLT-x) Manual

For use with HOBO® MX1104 and MX1105 data loggers

Specifications

	SD-VOLT-2.5	SD-VOLT-05	SD-VOLT-10	SD-VOLT-24
Maximum Input	0 to 2.5 VDC	0 to 5 VDC	0 to 10 VDC	0 to 24 VDC
Accuracy	±0.1 mV ±0.1% of reading	±0.2 mV ±0.3% of reading	±0.4 mV ±0.3% of reading	±1.0 mV ±0.3% of reading
Impedance	> 1 MΩ	20 KΩ	20 KΩ	48 KΩ
Resolution	0.002% of full scale			
Cable Length	1.83 m (6 ft)			

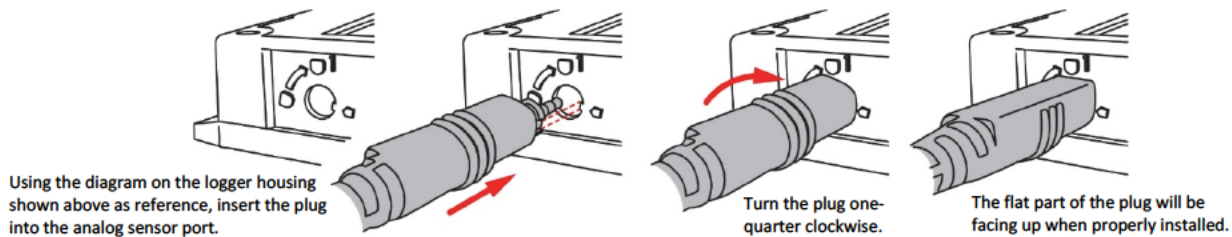




Wires connect to sensor:

- Switch 2.5 V (red) not used
- Signal In (white) +
- Common (black) -

Using the Sensor with the HOBO MX Analog/Temp/RH/Light (MX1104) or HOBO MX 4-Channel Analog (MX1105) Data Logger

1. Insert the plug into an analog sensor port on the logger. Turn the sensor plug one-quarter clockwise until it stops.



2. In HOBOconnect™, connect to the logger and tap . The sensor type will be selected automatically. Set any other logger settings and tap  configuring the logger.