

PanelPilot **B**

Low-cost Configurable E-paper Displays



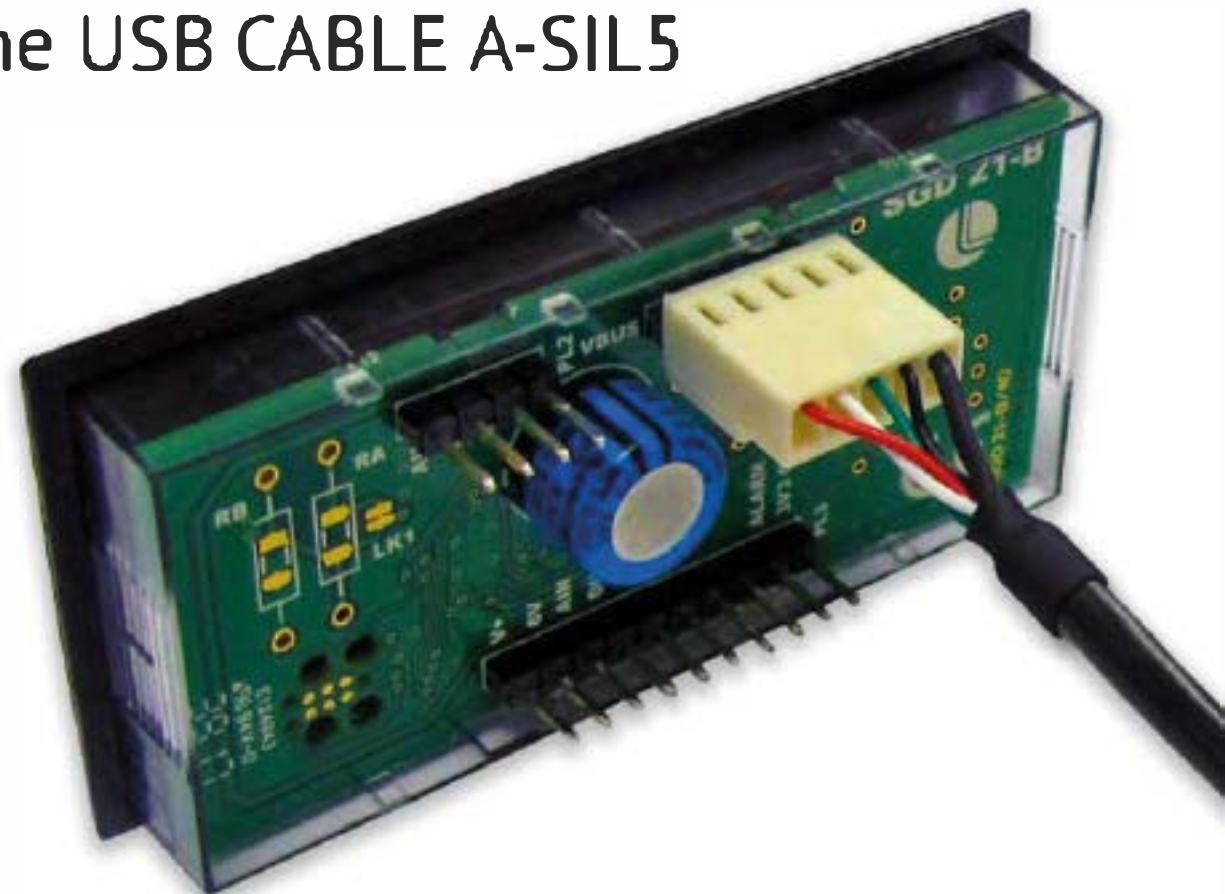
Configuring your display

1 Download PanelPilot B software onto your PC

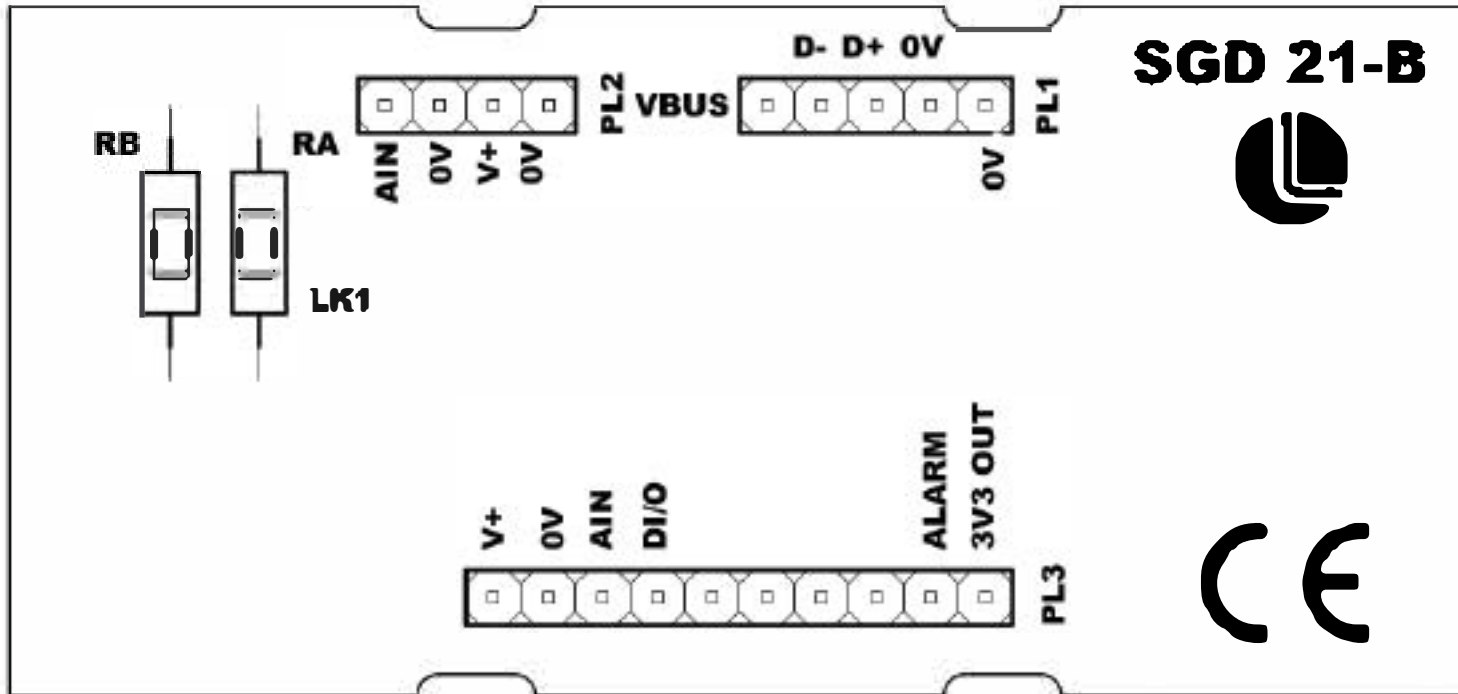


2 Connect the device to your PC using the USB CABLE A-SIL5 (not supplied) as shown.

3 Open up the software on your PC and follow step-by-step instructions for configuring your display.



Installing your display

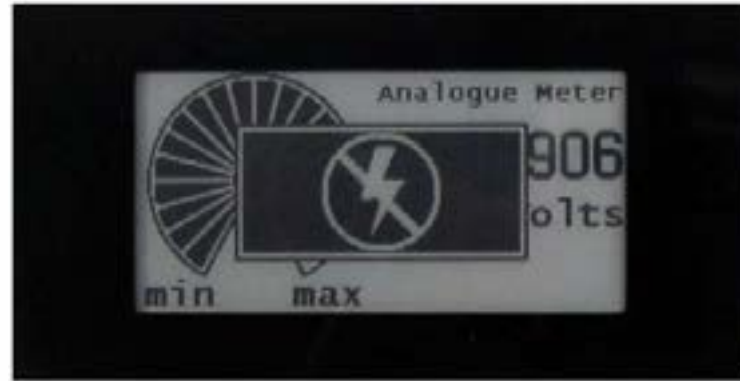


- 1 Fit scaling resistors if applicable (resistor values specified in the software).
- 2 Connect 4V-9V power supply to either PL2 or PL3.
- 3 Connect analogue input to either PL2 or PL3.
- 4 If used then connect alarm and digital pins on PL3.

- Fit scaling resistors **RA and RB** if applicable.
- Connect 4V-9V power supply to **V+ and 0V** on PL2 or PL3
- Connect analogue input to **AIN and 0V** on PL2 or PL3
- If used, then connect alarm and digital pins to **ALARM and DI/O pins** on PL3

What's in the box?

- Panel meter
- Fixing kit
- Quick start guide



Accessories

- USB CABLE A-SIL5



Test Equipment Depot - 800.517.8431
99 Washington Street, Melrose, MA 02176
TestEquipmentDepot.com