

OLP-82/82P

SmartClass™ fiber power meter and microscope



The new OLP-82 from Viavi Solutions is the first handheld tool to combine pass/fail fiber inspection and optical power measurement (OPM) into one solution. As part of the new Viavi SmartClass Fiber family, the OLP-82 helps service providers guarantee a lifetime of system performance from their network connectivity and gives contractors an essential tool for delivering best-in-class reliable networks to their customers.

The OLP-82 is ideal for technicians at any skill level with instant pass/fail acceptance results for both end-face quality and OPM in one button push. The OLP-82 can also save test results and generate certification reports to document work quality. Integrating these capabilities into one system helps the OLP-82 drive technician behavior toward implementing today's best practices in a seamless workflow that optimizes efficiency and reliability so they complete the job right—the first time.

The handheld OLP-82 can be used anywhere today's fiber technicians go, up poles or down holes. Technicians get ultimate flexibility and performance from this powerful, easy-to-use solution that can help any technician become an instant fiber expert.

Key Benefits

- Complete jobs faster, correctly, and on time—the first time: Uniquely integrates fiber inspection and test for an efficient, easy-to-use solution that promotes best practices for handling fiber
- Analysis with pass/fail results on one handheld device: Automatically and easily certifies fiber end-face condition and measures optical power making even new technicians fiber experts
- Easily generates certification reports: Prove that work quality meets industry standards and customer specifications
- Use it anywhere: A portable, organized, hands-free carrier for easy use inside homes, at demarcation points, or up on telephone poles and cell towers

Key Features

- Field-portable OPM with multiple calibrated wavelengths from 780 to 1625 nm
- Automated pass/fail analysis for fiber inspection and test
- Supports both industry-standard and user-definable acceptance criteria
- Available with integrated PCM
- Integrated connector certification reports
- Onboard storage for fiber inspection and test results
- Connects to a PC via mini-USB to export data and manage acceptance criteria using FiberChekPRO™ software
- Two USB ports to connect additional devices such as a P5000i microscope
- Automatic fiber-image centering
- Modern, smartphone-style user interface with touch screen
- Rugged, weather-proof design

Become an Instant Fiber Expert with SmartClass Fiber

- ✓ **Integration** Combines inspection and testing
- ✓ **Automation** Pass/fail certification
- ✓ **Ease of use** Intuitive smartphone-style user interface

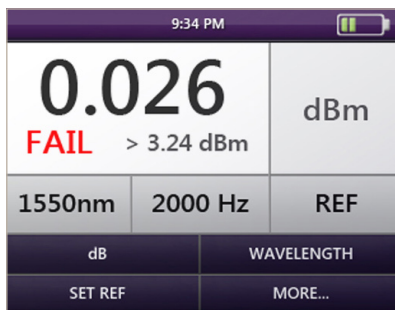
Intuitive Smartphone-Style User Interface

View a high-contrast, color touch screen with menu icons.



Accurate Measurement and Simple Operation

Make quick, easy dual-wavelength measurements at 850 and 1300 nm or 1310 and 1550 nm using saved reference levels.



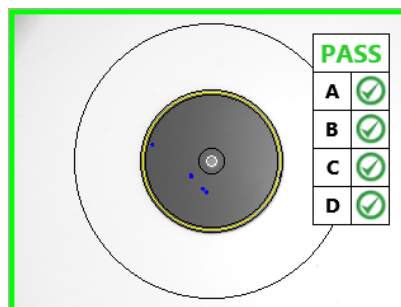
Store Inspection and Measurement Readings on the Device

Store up to 10,000 measurement results on the device for export to a PC.



User-Definable Pass/Fail Acceptance Criteria

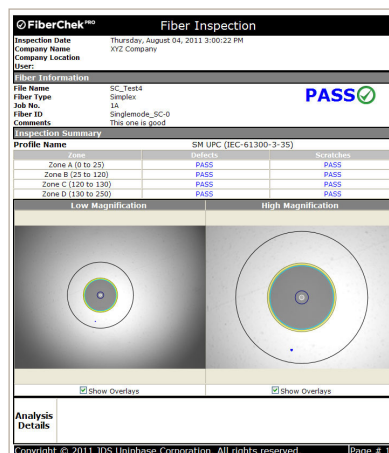
Whether using the IEC 61300-3-35 or customer-specific requirements, users can easily manage user-specified acceptance criteria with dedicated profiles for each requirement.



Comprehensive Data Management and Report Generation

Easily generate certification reports that prove your quality of work meets industry standards or customer specifications using FiberChekPRO PC software.

- Easily store measurement data at the press of a button
- Manage data and store results on the instrument
- Download measurement results to a PC via a USB interface



Inspect and Test Fiber Anywhere

Combines Inspection and Test in One Handheld Device

Use either the onboard patch-cord microscope (PCM) or connect a P5000i digital analysis microscope to inspect fiber end faces and eliminate poor-quality components from entering your network.

Benefits of Using P5000i and PCM Together

Working with both the P5000i and PCM:

- Optimizes technician performance with tools designed for workflow
- Improves network activation with a reliable, repeatable processes
- Ensures test leads are safely stored when not in use
- Enables quick and easy inspection of both female (bulkhead) and male (patch cord) fiber connectors without changing tips

Automatic Image Centering

This convenient feature centers the fiber image on the screen.

Ultimate Portability and Organization

The hands-free carrier stores all essential tools, such as the inspection microscope, visual fault locator, and cleaning materials, in an organized, portable system that you can take with you to every job.



Specifications

General Technical (typical at 25°C)	
Weight	1.2 lb (1.4 lb for PCM version)
Dimensions (H x W x D)	
OLP-82	20.83 x 11.18 x 6.35 cm (8.2 x 4.4 x 2.5 in)
OLP-82P	20.83 x 152.4 x 6.35 (8.2 x 60 x 2.5 in)
Video display	3.5 in color LCD, 4:3 ratio
Keypad	11+2 dome-buttons membrane panels 4 LED indicators
Connector	USB 2.0 (2 x host, Type A; 1 x device, Micro-B)
Power source	AC adaptor, battery (Alkaline or rechargeable Li ion), USB port
Run time	
Rechargeable Li ion = (minimum)	8 hours
Alkaline	5 hours
Power mode	Active, Auto-off
Auto-shutoff time	User programmable
Charge time	
AC adaptor	8 hours
USB port	16 hours
Power source	USB port
Certification	CE, IEC/EN61326
Warranty	1 year
OPM	
General Technical (typical at 25°C)	
Interface	Free space (2.5 mm UPP adapter, 1.25 mm UPP optional)
Power measurement range	
1300/1310 nm	
Standard	-50 to +10 dBm
High power	-40 to +23 dBm
850 nm	
Standard	-45 to +10 dBm
High Power	-35 to +23 dBm
Display range	
Standard	-65 to +10 dBm
High power	-50 to +23 dBm
Maximum permitted input level	
Standard	+10 dBm
High power	+23 dBm
Standard wavelength settings	850, 980, 1300, 1310, 1490, 1550, 1625 nm
Intrinsic uncertainty ¹	±0.20 dB (±5%)
Linearity ²	±0.06 dB (-50 to +5 dBm)
Wavelength range	780 to 1650 nm

1. Under the following reference conditions: -20 dBm (CW), 1300 nm ± 1 nm, 23°C ± 3K, 45 to 75% rel. humidity, 9 to 50 μm fiber.

2. -5 to +45°C

Wavelength and modulation	
Result display	dBm, dB, MW
Resolution	0.01 dB
Calibrated wavelengths	850, 1310, 1490, 1550, 1625
Wavelength settings	780 to 1650 in 1 nm steps
780 to 1650 in 1 nm steps	270 Hz, 1 kHz, 2 kHz
Auto lambda	Yes
Video Display	
General Technical (typical at 25°C)	
Live image	320 x 240 x 8 bit gray, 10 fps
Light source	Blue LED, 100,000+ hour life
Lighting technique	Coaxial
Low-magnification field-of-view (FOV)	
Horizontal	740 µm
Vertical	550 µm
High-magnification field of view (FOV)	
Horizontal	370 µm
Vertical	275 µm

Ordering Information

Standalone Units	
Description	Part Number
HD4i digital handheld video display	FBP-HD4i
HD4iP digital handheld video display, dual-mag patch cord module	FBP-HD4iP
OLP-82 digital handheld video display, integrated optical power meter	2315/01
OLP-82 digital handheld video display, integrated high-power optical power meter	2315/03
OLP-82P digital handheld video display, dual-mag patch cord module, integrated OPM	2316/01
OLP-82P digital handheld video display, dual-mag patch cord module, integrated high-power OPM	2316/03
Kits	
HD4i basic kit	FBP-SD4i
HD4i pro kit	FBP-SD4i-PRO
HD4iP basic kit	FBP-SD4iP
HD4iP pro kit	FBP-SD4iP-PRO
OLP-82 basic kit	FIT-8201
OLP-82 pro kit	FIT-8201-PRO
OLP-82P basic kit	FIT-82P01
OLP-82P pro kit	FIT-82P01-PRO
OLP-82P high power, basic kit	FIT-82P03
OLP-82P high power, pro kit	FIT-82P03-PRO

Included Items	
Stand-Alone Units	
SmartClass Fiber instrument	
Soft bag for SmartClass Fiber and accessories	
Power supply for SmartClass Fiber (12 V)	
FiberChekPRO software installation disk	
USB cable USB-A to micro-USB	
QuickStart manual and safety instructions	
Dry batteries (8x)	
Additional Items in Basic Kits	
P5000i Digital Inspection Microscope	
Inspection tips and adapters (bulkhead: SC and LC, patch cord: 2.5 and 1.25 mm)	
1.25 mm OPM adapter OLP-82/82P	
Additional Items in Pro Kits	
P5000i Digital Inspection Microscope	
Inspection tips and adapters (bulkhead: SC and LC, patch cord: 2.5 and 1.25 mm)	
1.25 mm OPM adapter OLP-82/82P	
Cleaning materials for 2.5 and 1.25 mm (bulkhead and patch cord)	
Hands-free carrier for SmartClass Fiber	
Rechargeable battery for SmartClass Fiber (Li ion)	
FFL-050 Visual Fault Locator with 2.5 and 1.25 mm adapter	
Accessories	
Description	Part Number
Kit, RBP2 rechargeable battery (Li ion) and FBPP-PS4 power supply (12V)	FITP-RCG1
Power supply for SmartClass Fiber (12V)	FBPP-PS4
Rechargeable battery for SmartClass Fiber (Li ion)	FITP-RBP2
UC4 hands-free carrier for SmartClass Fiber	FITP-UC4
UC4P hands-free carrier for SmartClass Fiber with PCM	FITP-UC4P
Adapter U12 for OLP-82/82P	VPP-UPP12
Adapter U25 for OLP-82/82P	VPP-UPP25
SCASE2 soft shoulder case for SmartClass Fiber tools	FBPP-SCASE2



99 Washington Street
Melrose, MA 02176
Phone 781-665-1400
Toll Free 1-800-517-8431

Visit us at www.TestEquipmentDepot.com