

SOLDERING / ASSEMBLY



SS-989E 2 In 1 SMD Hot Air Rework Station



- Quiet operation & ESD safe design
- Closed circuit sensor design
- Microprocessor-controlled with Calibration function features accurate temperature control and easy to repair
- Alumina Ceramic Soldering iron heating element features high power, fast warm up
- Silicone handpiece cord wire heat-resistant up to 200°C
- Comes with AWG 20 (0.5mm²) UL Certified Wires.
- Individual function start saves energy
- Auto cool-off process to prolong the life of heating element
- Interchangeable and applicable to most of branded hot air nozzles and tips

2X Lifetime
Heat Fast, 36sec 300°C
Smart Microprocessor controlled
Auto Cooling System
UL certified wires



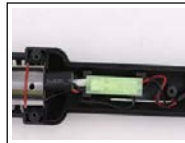
Soldering stand



SMD rework



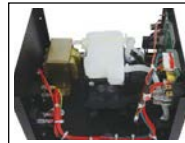
Soldering work



Connectorized design for quick change heater



All in one PCB design



High quality assembly

Specification	
Model No.	SS-989E
Power Consumption	700W
Soldering Power	60W
Soldering Iron Temperature Range	200°C ~ 480°C (392°C ~ 896°F)
Hot Air Temperature Range	room temperature ~ 480°C (896°F)
Heating Element	Alumin ceramic heating element
Hot Air Heating Element	Metal Heating Core
Pump/Motor Type	Diaphragm Pump
Air Capacity	24L/min (max)
Equipment noise	45dB
Temperature Display	LED
Power Input	AC110-120V, 60Hz
Standard Plug	
Dimensions	255(L)x190(W)x140(H)mm
Weight	4200g
Accessories	
Soldering Iron (60W)	9SS-900N-SI(AC24V/60W) x 1pcs
Hot Air Gun	9SS-900NE-HG (AC110V~120V)
Soldering Stand	1pcs
Nozzle	9SS-900-A1 (Ø2.3mm) x 1pcs 9SS-900-A2 (Ø6.4mm) x 1pcs 9SS-900-A3 (Ø8.8mm) x 1pcs
Individual packing	Color Box

Replacement Tips:

Please refer to 5SI-216N series Soldering tip on page.87

Replacement Accessories:

Soldering Iron: 9SS-900N-SI

Hot Air Gun: 9SS-900NE-HG(AC110~120V)

Soldering Iron Heater: 9SS-900N-HT

Hot Air Gun Heater: 5SS-989NE-H(AC 110~120V)

IC Package	IC (mm)	Model No.
Single		9SS-900-A1
		9SS-900-A2
		9SS-900-A3
QFP (Quad Flat Pack)	10x10	9SS-900-B
	14x14	9SS-900-C
	17.5x17.5	9SS-900-D
	14x20	9SS-900-E
	28x28	9SS-900-F
SOP (Small Outline Package)	4.4x10	9SS-900-H
	5.6x13	9SS-900-I
	7.5x15	9SS-900-J
	7.5x18	9SS-900-K
PLCC (Plastic Leaded Chip Carrier)	17.5x17.5	9SS-900-L
	20x20	9SS-900-M
	25x25	9SS-900-N
	30x30	9SS-900-O

SS-969E SMD Rework Station

Brushless motor
Microprocessor-controlled
Auto-sleep and work mode
UL certified wires
Durable metal case



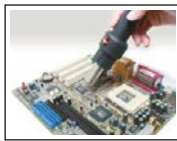
700W
450°C

- Microprocessor-controlled with closed circuit sensor design, provide high power and quick warm up times.
- Adjustable air flow, air volume and temperature to meet variety applications.
- Handle with sensor design provides real-time operating.
- Brushless motor design, quiet in operation, equipment noise less than 45dB.
- Auto cool-off process to prolong the life of heating element.
- Silicone Handpiece cord wire heat-resistant up to 200°C.
- AWG 20 (0.5mm²) UL Certified Wires.
- Metal case with painting makes more durable.

Specification	
Model No	SS-969E
Power Consumption	700W
Temperature Range	100~450°C(212~842°F)
Heating Element	Metal Heating Core
Equipment Noise	<45dB
Temperature Display	LED
Air Volume	120L / min (Max.)
Fuse type	250V / 8A
Input Voltage	AC110V~120V, 60Hz
Plug Type	E
Machine Size (mm)	170 x 170 x 140
Overall Package (mm)	280 x 185 x 170
Weight	1.43 kgs
Accessories	
Heat Air Gun	5SS-969NE-HG AC(110~120V) (225 x 60 x 40mm / wire length 140cm)
Nozzle	9SS-969-A1 x 1pcs (ID: Ø 4.3mm) 9SS-969-A2 x 1pcs (ID: Ø 7.4mm) 9SS-969-A3 x 1pcs (ID: Ø 9.4mm)
Individual packing	Color box



Standard nozzles x 3 pcs



SMD rework



High quality assembly



Additional ground contact

SS-331E LCD Desoldering Station

High Power Vacuum Pressure
Microprocessor-controlled
Ceramic Heater for quick heat up



NEW



90W
480°C

- Built-in high power 600mm Hg air pump, designed for lead-free desoldering of single and multi layer PCB.
- High performance provides fast heating response.
- Microprocessor controlled, provides accurate temperature control from 160 to 480°C.
- Provides fast heat up, fast recovery and high insulation resistance.
- Features 20 times longer lifetime than transitional type heater and better performance.
- Ergonomically friendly structure allows one hand operation, more efficient and comfortable.

Specification	
Voltage	100~240V AC
Power Consumption	90W
Temperature Range	160°C ~ 480°C
Control System	Microprocessor
Vacuum Pump System	Air Pump Motor
Vacuum Pressure	>600mm Hg
Heating Element	Ceramic Heater
Connecting Cord/Hose Length	105cm
Power Cord Length	1.2m
Plug Type	E
Station Size (mm)	172 x 135 x 190
Weight (kgs)	1.6
Accessories	Spare tip x 3:(ø1.2(on the gun)/ø1.0/ø1.5mm) Cleaning tool x 3 (ø0.7/ø0.9/ø1.2mm) Filter sponge x 4 (ø20.8x1+ø16.8x3)
Individual packing	Color Box



Ceramic heater features 20 times longer lifetime and better performance than transitional type heater

▶ SS-611A Heat Gun Set



- Smart overheat protection design
- Automatic cool air flow to reduce waiting time from overheating shut down while working
- 2 temperature settings from 300°C~500°C for a variety of applications
- Dual color ergonomic grip and lightweight design provides greater comfort
- Includes 4 nozzles and 1 scraping tool with carrying case, easy to carry and store



Included 4 Nozzles + 1 Scraper



Paint and varnish removal

Voltage	Power	Dual temperature range	Case size (mm/inch)	Standard plug
120V 60Hz	I-750W II-1500W	I-300°C II-500°C	295x275x85 11.6" x 10.8" 3.3"	A

Individual packing: Color sleeve + shrink pack

- ⚠ Caution:**
- For safety, after using this product for one hour, please shut-off for 10 minutes to cool down temperature
 - If this product is overheating after shut-off, the protection function will be coercively booted and shut this appliance off for 10 minutes. To prevent any overheating problem, never put the appliance down on its air outlet nozzle. Always keep its outlet nozzle upward or put it on one of its sides.

▶ 902-458 Heat Gun with LCD Display



- Mabuchi motor provides high performance and long life.
- Large LCD display for easy monitoring.
- Air flow and temperature control system maintains constant temperature.
- Perfect for applications requiring consistent application of heating.
- Adjustable, stepless temperature range from 212°F~1202°F(100°C~650°C).
- Smart protection design switches off automatically to prevent overheating.
- 20 second automatic cool air flow prevents accidental burns and extends the life of the heating element.
- Includes 2 extra nozzles for a wide variety of applications.



NEW



Removal of window glazing



Paint removal



Voltage	Power consumption max.	Switch-I	Switch-II	Switch-III	Cable length	Certificate	Standard plug	Accessories
120V 60Hz	1500W	11 CFM 122°F (50°C)	11 CFM 158~1022°F (70~550°C)	18 CFM 158~1022°F (70~550°C)	6 Ft.	c-UL	A	4 nozzles and 1 scraping tool

Individual packing: Color sleeve + shrink pack

SS-257EU LCD Smart Soldering Station Stainless Steel Heating Element



NEW

- **Microprocessor controlled**
Features best performance, accurate temperature control.
- **High quality heating element, recovery fast**
Comes with high end quad-wire heating element for fast heat recovery.
- **Large LCD display with shuffle knob design**
Large screen with backlight, LCD contrast and brightness are adjustable.
Designed with manual and shuffle function for easy setting, more convenient and user friendly.
- **3 data memories**
Store and recall frequently used temperature values.
- **USB port output**
Built-in DC 5V/1A USB port for power supply.
- **Smart functions**
Auto sleep and awake up function, auto power off, system lock, tip calibration and low consumption.
- **Function menu setting**
Designed with function manual and shuffle knob for easy setting, more convenient and user friendly.
- **Temperature calibration function**
- **Resettable fuse protection design**

75W
500°C

INDUSTRIAL GRADE



Large LCD w/backlight



Shuffle knob for quick setting



USB power supply

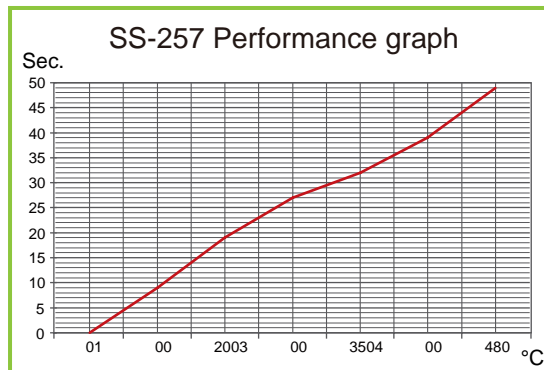
Model No.	SS-257EU
Input voltage	AC 110~120V 60Hz
Control system	Microprocessor-controlled
Power consumption	75W
Display	LCD 74x40mm, 240 x120 dot. backlight
Temperature range	30~500°C±10°C(86~932°F±50°F)
Temperature calibration	±0~699°C(32~1290°F)
Temperature stability	±2°C/±36°F (no load)
Heating element	High end quad-wire Heater
Plug	E
Sleep mode	OFF, 1~360min. adjustment
Temperature of sleep mode	30~400°C/86~752°F
USB port output	DC 5V/1A
Memory	3 sets
Tip-to-Ground resistance / potential	≤ 2 Ω / ≤ 2 mV
Size	180 x 150 x 106 mm
Weight	2.36 Kg

Replacement Accessories:

Soldering Iron: 9SS-257-SI
Soldering Iron Heater: 9SS-257-HT

Replacement Tips:

Please refer to 5SI-216N series Soldering tip on page 87



▶ **SS-206E / SS-207E** Temperature-Controlled Soldering Station



UL certified wires and components

Modular design for quick repair

Alumina ceramic heater

Compact size design

Lead free process



SS-206E



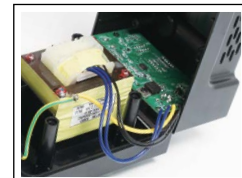
SS-207E

Features

- Comply with cTUVus safe certification.
- Temperature range 200- 480°C (392-896°F).
- Soldering iron handles are insulated and ergonomically designed for ease and comfort.
- Celsius or fahrenheit temperature setting.
- Control IC modular design for easy and quick repair.
- Resettable fuse protection design.



Modular design for easy repair



High quality assembly

Model No.	SS-206E	SS-207E
Power consumption	60W	
Input Voltage	110~120V 60Hz	
Output voltage	24VAC	
Display	Analog	Digital
Heater	Alumina ceramic heating element	
Temperature range	200°C- 480°C (392°F-896°F)	
Station Size(mm)	145x90x120	
Standard Plug	E _i type	
Replacement heater	9SS-900N-HT	
Soldering Iron	9SS-900N-SI	
Individual packing	Color Box	

Replacement tips:

OAL:43mm I.D.: 4.0mm O.D: 6.3mm

	5SI-216N-B (Included)		5SI-216N-3.2D
	5SI-216N-B1.0		5SI-216N-1C
	5SI-216N-BC		5SI-216N-2C
	5SI-216N-0.8D		5SI-216N-3C
	5SI-216N-1.2D		5SI-216N-4C
	5SI-216N-1.6D		5SI-216N-I
	5SI-216N-2.4D		5SI-216N-K

▶ 900-259 Mini Soldering Station

- Precision temperature control: ~330°C (~626°F)
- Super slim, pen-like style for greater control and visibility
- Specially designed for repairs to cell phones and PC boards
- Conductive soldering stand
- Dual voltage AC 110/220V



Replacement tip:

	900-245
--	---------

Voltage	Consumption	Temperature	Standard plug	Individual packing
110V	4~14W	~330°C (~626°F)	E	Color box

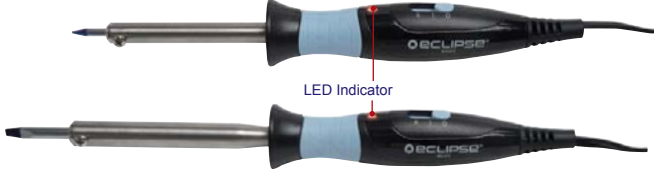
▶ 902-512 / 902-513 Dual Wattage Soldering Iron



DUAL WATTAGE professional soldering iron, excellent for all electronics hobbyists as well as industrial users.

- Selectable switch lets you easily swap the power setting.
- Tailor your temperature depending on your project.
- Ergonomic handle with comfortable grip for max. user comfort.
- Comes with long life tip and safety stand.
- Includes sheet metal stand.

902-512 15/30W Dual Wattage Soldering Iron



LED Indicator

902-513 30/60W Dual Wattage Soldering Iron

Model No	Voltage	Consumption	Individual packing
902-512	120V	15/30W	Blister card
902-513	120V	30/60W	Blister card

	902-534 Replacement tip for 902-512
	902-535 Replacement tip for 902-513

▶ 902-329 25W Soldering Iron



Replacement tip:

902-333 (Pencil type)

Voltage	Consumption	Temperature	Handle color	Standard plug	Individual packing
120V	25W	340°C	Black	A	Blister card

▶ 900-035 20W~40W Soldering Station

- 20W-40W switchable solder station
- UL approved
- Comes with pencil tip



Replacement tip:

	900-036 (Chisel type)
	900-146 (Pencil type)

Voltage	Consumption	Temperature	Standard plug	Individual packing
110V	20~40W	400°C±30%	A	Color box

▶ SI-125A-15/SI-125A-20 Mini Soldering Iron



- Specifically for areas that require small size and fine application.
- Lightweight and triangle shape plastic handle for user comfort.
- Heats up fast but less wattage required.
- Tips screw on and off for easy changing.



Replacement tip:

	5SI-125T-B (Standard)
	5SI-125T-SB
	5SI-125T-D

Standard plug	OAL (mm/inch)	Individual packing
A	168/6.6	Blister card

Model No.	Voltage	Consumption	Temperature	Heater	Handle color
SI-125A-15	110-120V	15W	360°C±10%	Ceramic heater	Orange
SI-125A-20	110-120V	20W	410°C±10%	Ceramic heater	Orange

▶ 900-018N 30W Soldering Iron

- Converts easily from pen to gun configuration.
- When not in use handle covers tip for storage protection.



Replacement tip:

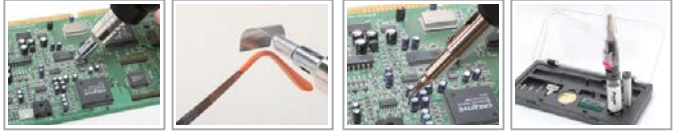
	900-020N (Pencil type)
--	------------------------

Voltage	Consumption	Temperature	Handle color	Standard plug	Individual packing
110~120V	30W	400°C±10%	Green / Black	E	Blister card

GS-23K Gas Soldering Iron Kit-Auto Ignition



- Auto ignition for starting and operating easily and safely under any condition.
- Safety ignition switch complies with CPSC standard to prevent children misuse.
- Comes with TR90 high transparent nylon gas tank features long service life and more safety.
- With Ceramic heater for long service life.
- Adjustable flame control for precision use.
- Butane is easy to refill and check with see-through fuel window.
- Complete kit comes in a plastic case and meets a variety of operating applications.



Hot blow up to 600°C Torch up to 1300°C Soldering up to 500°C Stand support for convenient work



Soldering Temperature	Hot Blow Temperature	Torch Temperature	Fuel Capacity	Time	Size (mm/inch)	Individual packing
500°C	600°C	1300°C	15ml	90min	245 x Ø 29mm/ 9.6xØ1.1"	Color Box

GS-210 Professional Soldering Iron & Gas Torch

- Auto ignition is easy to start and operate under any condition
- Adjustable flame control for precision use
- Built-in stand for safety and easy placement during work
- Needle soldering tip and soldering head included
- Optional tips available for different applications



Soldering temperature	Hot blow temperature	Torch temperature	Fuel cap.	Time	Size (mm/inch)	Individual packing
370 °C	500 °C	1300°C	7 ml	30~40 min	170xØ 24 6.7xØ0.94	Blister card



900-004
ESD Mini-Desolder Pump



DP-366D
Desoldering Pump



DP-366J
Desoldering Pump



DP-366P
Desoldering Pump



Model No.	Material	Suction Capability	OAL(mm/inch)	Individual packing
900-004	Aluminum	30cm-Hg	163/6.4	Blister card
DP-366D	ABS	32cm-Hg	210/8.3	Blister card
DP-366P	ABS	40cm-Hg	330/13.0	Blister card
DP-366J	PC	32cm-Hg	210/8.3	Blister card

▶ GK-368 Battery Operated Glue Gun



- Cordless design, free from A/C power cords and dangerous dangling cords.
- Convenience LED light allows for work in dark areas.
- Closed viewing window for easy glue stick checking, more constant temperature and dust free operation.
- For Ø7.5mm glue sticks
- Perfect for toys and models, corkboards, DIY projects, school projects, quick repairs around the house, decorations, wood crafts and more.

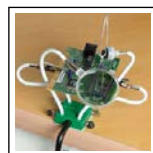


Power	Preheat time	Power source	Optional glue sticks	Running time
7W/6V	3-4 minutes	1.5V AA battery x 4 (not included)	Model No.: GK-67330-8, Ø7.5mm Glue Sticks, 8 pcs/pack	45 minutes (Alkaline type)

▶ 902-227 Helping Hands Octopus Clamp Kit



- Maximum thickness of table or bench edge: 1.5"(40mm)
- Including magnifier arm x1, magnet arm x1, stayput arms x4
- Magnification: 2.5X



Multi function

Individual packing: Blister card

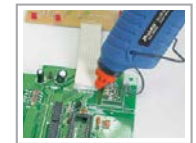
▶ 900-115 Glue Gun



- Solid state electric glue provides a fast, easy way to dispense hot melt adhesive for hundreds of fastening and repair jobs.
- Specially designed feed mechanism, spring-tensioned nozzle and silicone sleeve assure precise control of adhesive flow for neater work.



Decoration model and more...



Models

Voltage	Power	Preheat time	Flow of glue	Standard plug	Individual packing
120V	30-80W	10 min	14-16g per min	A (I)	Double blister

▶ 900-118A Glue Stick

- 6pcs per pack



▶ 902-094 Helping Hands



- The practical helper for soldering work for electronics and model-making.
- Holding clamps adjustable in many ways, complete with magnifying glass 3.5"(90mm) dia: 2X.
- Sturdy stand.

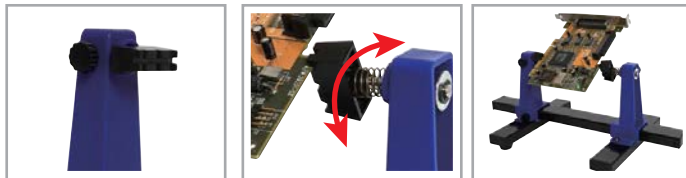


Individual packing: Color box

▶ SN-390 Adjustable Soldering Clamp Holder

Particularly designed to clamp a circuit board, ideal for PCB soldering and desoldering rework.

- Rigid metal structure with stabilizing rubber pad, perfect for your project.
- The 2 adjustable grip retractable stand accommodates various board sizes up to 200mm width and 4 different thicknesses.
- The clamps allow 360 degrees rotation and can be secured in any position, make your soldering projects more easy and efficient.
- Lightweight design, easy to carry.



4 different thickness holders

Allows 360 degrees rotation and can be secured in any position

Demo only, PC board not included.

Material	Max. circuit board size	Circuit board thick	Dimensions	Weight	Individual packing
ABS arm + metal base	20 x 14 cm / 7.9x5.5"	1.2 / 1.8 / 2.0 / 3.0mm	30 x 16.5 x 12.5 cm 1.2 x 0.6 x 0.5"	450g	Color Box

▶ SN-396 Soldering Helping Hand with LED Magnifier

- **3 helping hand clips**
- **Powered by batteries or adaptor**
- **Excellent solution for soldering work**



- Comes with 16 SMD LEDs illuminating, energy saving and super bright.
- The magnifier is on a flexible neck gives you 2.5X(6D) and 4X(12D) magnification for finishing those fine solder joints.
- The adjustable 3 helping hands clips feature precise positioning and secure gripping of your work.
- The magnifier is powered by either 4 AA batteries or external power adaptor.
- The set includes solder spool brackets, soldering iron holder, cleaning sponge & brass tip cleaner and solder flux.



Magnifying Lens size	Magnification	Magnification Material	Light source	Neck length (for magnifier)	Neck length (for alligator clips)
Ø90mm & Ø20mm	2.5X(6D) + 4X(12D)	Glass	16 pcs SMD LEDs	265mm 10.4"	250mm 9.8"
Base size	Power Battery	Power Adaptor	Accessories	Weight	Individual packing
190x170mm	1.5V AA x 4pcs batteries (not included)	DC 6V adaptor input (not included)	Sponge size(30 x 50mm), Solder flux x 10g, Brass Tip Cleaner x 17g	1,150 g	Color Box

▶ Helping Hands

900-037



900-206



900-015



Model No.	Material			Magnification	Base OAL.	Individual packing
	Magnifier	Arm	Base			
900-037	Acrylic	Low carbon steel	Cast-iron	Ø 50mm 6D(2.5X)	54x54x57mm / 2.1x2.1x2.2"	Color box
900-206	Glass			Ø 64mm 6D(2.5X)		
900-015	N/A			N/A		

▶ **900-016** Soldering Stand



Individual packing: Color box

▶ **6S-2** Soldering Stand



Individual packing: Color box

▶ **900-099** Soldering Stand



Individual packing: Color box

▶ **902-095** Mini Soldering Stand



- 2 position iron holder stand
- Built-in sponge tray



Individual packing: Color box(2pcs / pack)

▶ **900-242/ 900-243** Soldering Tip Cleaner
Replacement Tip Cleaner



- No water necessary.
- Anti-slip pad.
- Made of low abrasive brass shavings.
- Cleans better than conventional sponges.
- No temperature drop as in conventional sponges.

Model No.	Description	Spec	Individual packing
900-242	Soldering tip cleaner	ø83 x 27mm/ 3.3" x 1.1	Blister card
900-243	Replacement tip cleaner	25g	Hanger (5 pcs/pack)

▶ **902-335** Cut To Size Soldering Sponge

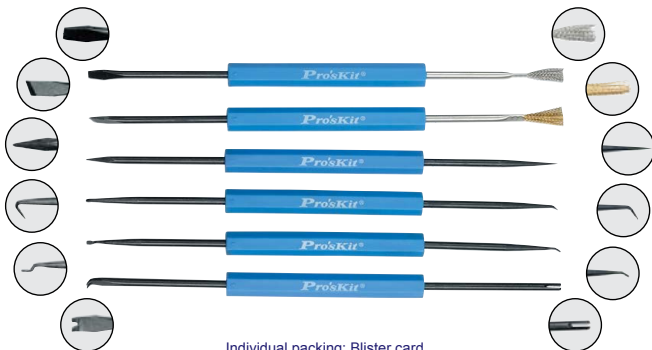


Material	Size(mm/inch)	Individual packing
Cellulose	100x110/3.9x7.8	Hanger (3 pcs/pack)

▶ **900-100** Solder Aid Tools



- This kit contains specialized tools you need for soldering: Assisting rods for P.C.board soldering work.



Individual packing: Blister card

▶ **900-250** Solder Aid Tools



- This kit contains specialized tools you need for soldering: a heat sink to protect your heat-sensitive devices, knife and brush, scraper and hook, fork and spike.

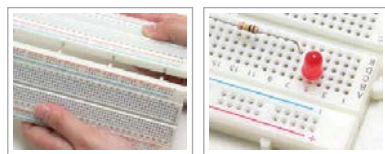


Individual packing: Blister card

▶ 900-247 Round Hole Bread Board



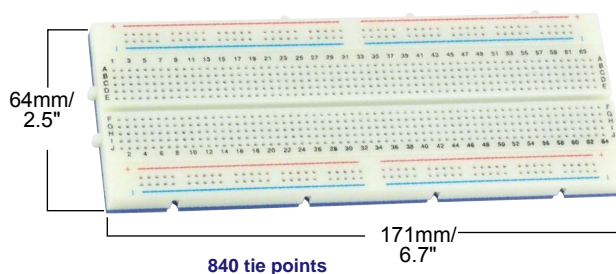
- 840 tie points
- Round hole designed for easy plug and pull
- Expandable by combining several boards together to meet your different requirement
- Wearproof material made of ABS & phosphor bronze with good flexibility and electric conductivity



Excellent expandability

Friendly graduations

Individual packing
Blister card



840 tie points

171mm/
6.7"

▶ 900-248/900-249 Round Hole Bread Board



Application:

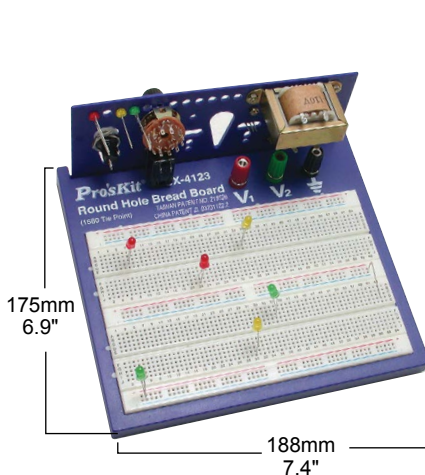
Used as a simulated layout for R&D and students.

Features:

- Round hole designed for easy plug and pull
- Expandable by combining several boards together to meet your different requirement
- Wearproof material made of ABS & phosphor bronze with good flexibility and electric conductivity

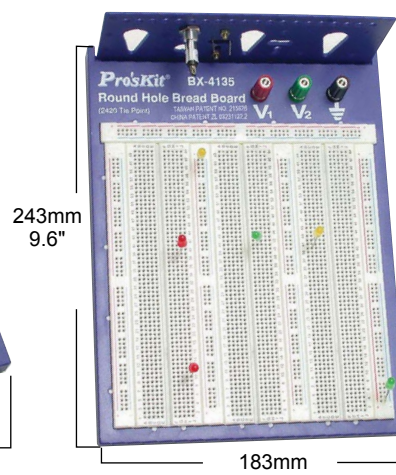


Edge plate can easily fold up



900-248

1580 tie points
(Demo only)



900-249

2420 tie points
(Demo only)

Model No.	Tie points	Individual packing
900-248	1580	Blister card
900-249	2420	

TAIWAN PATENT NO. 215526
CHINA PATENT ZL 03231122.2

▶ 900-271/900-272 Bread Board Accessory



- 70 pcs of 22 AWG solid wires
- Pre-cut, pre stripped and pre-formed on each end
- Variety of colors
- Completely reusable
- 14 lengths x 5 pcs each
- (2, 5, 7, 10, 12, 15, 17, 20, 22, 25, 50, 75, 100 and 125mm)

- 350pcs of 22 AWG solid wires
- Pre-cut, pre stripped and pre-formed on each end
- Variety of colors
- Completely reusable
- 14 lengths x 25 pcs each
- (2, 5, 7, 10, 12, 15, 17, 20, 22, 25, 50, 75, 100 and 125mm)



900-271



900-272

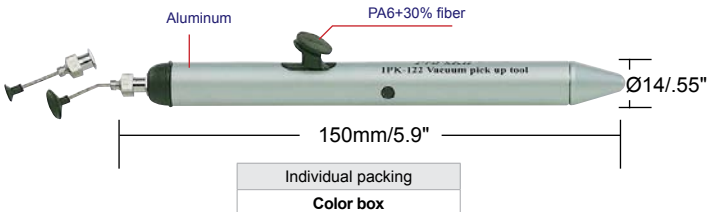
Case Size (mm/inch)	Individual packing
165x55x15/ 6.5x2.2x0.6	Poly bag + Hanger

Case Size (mm/inch)	Individual packing
178x90x28/ 7x3.5x1.1	Poly bag + Hanger

▶ 900-238 Vacuum Pick-Up Tool

- The hand-held SMD vacuum pick-up tool is ideal for picking up and moving electronic components, large or small. With fountain pen dimensions, it fits easily into your hand or pocket.
- The new high-power probes have longer holding action.

Function:
 • Lightweight, portable and suitable for picking and placing small components weighing up to 50 grams and having a flat surface, dilly packages and surface mount components, etc.



Individual packing
Color box

▶ 900-251/900-252/900-253 Liquid Dispenser Bottles

- Polyethylene bottles are not chemically reactive.
- Purity pump to prevent backwash of contaminants into container.



Model No.	Description	Individual packing
900-251	4 oz/114 ml	Poly bag + Hanger
900-252	6 oz/170 ml	Poly bag + Hanger
900-253	8 oz/227 ml	Poly bag + Hanger

▶ MS-018 Leak Proof Dispenser Pump Bottle

NEW



- Portable leak proof construction.
- Bottle scale indication.
- Anti dumping of cone design.
- No chemical reaction Polypropylene material.
- Perfect for fiber cleaning, nail treatment and more.

Material	Capacity	Individual packing
Polypropylene	180ml	Poly bag

▶ 900-270 Mini Vacuum Cleaner

Pb



Material	OAL (mm/inch)	Individual packing
polypropylene	128/5"	Blister card

▶ 900-058/900-181/900-222 Stainless Steel Forceps

Pb



Model No.	Material	Type	OAL (mm/inch)	Individual packing
900-058	AISI 410	Straight	130/5"	Blister card
900-181			160/6"	
900-222			Curved	

▶ 900-230 Flux Bottle

RoHS COMPLIANT

- Dispenses flux evenly with a fine tipped needle.



Material	OAL. (mm/inch)	Individual packing
PE	ø37x122/ø1.5x4.8	Poly bag + Hanger (2 pcs/pack)

▶ 902-529 Anti-Static Liquid Dispenser Bottle

NEW



- High Density Polyethylene (HDPE) durAstatic bottles are ESD Safe
- Long lasting dissipative properties - Rtt: 10⁹ to < 1 x 10¹⁰ ohms tested
- Stainless steel bottle cap with a transparent pad

Description	Capacity	Individual packing
High Density Polyethylene (HDPE)	180ml (6oz)	Poly bag

▶ MS-153C Bulb Blower

NEW



Comes with copper nozzle, providing high air pressure for removing dust safely and gently.

Made of ABS, Ø5.0x30mm/Ø0.2"x1.2"

Material	Pump capacity	OAL. (mm/inch)	Individual packing
PVC	110 ml	Ø 56x110mm / Ø2.2"x5.5"	Blister card