

Test Equipment Depot

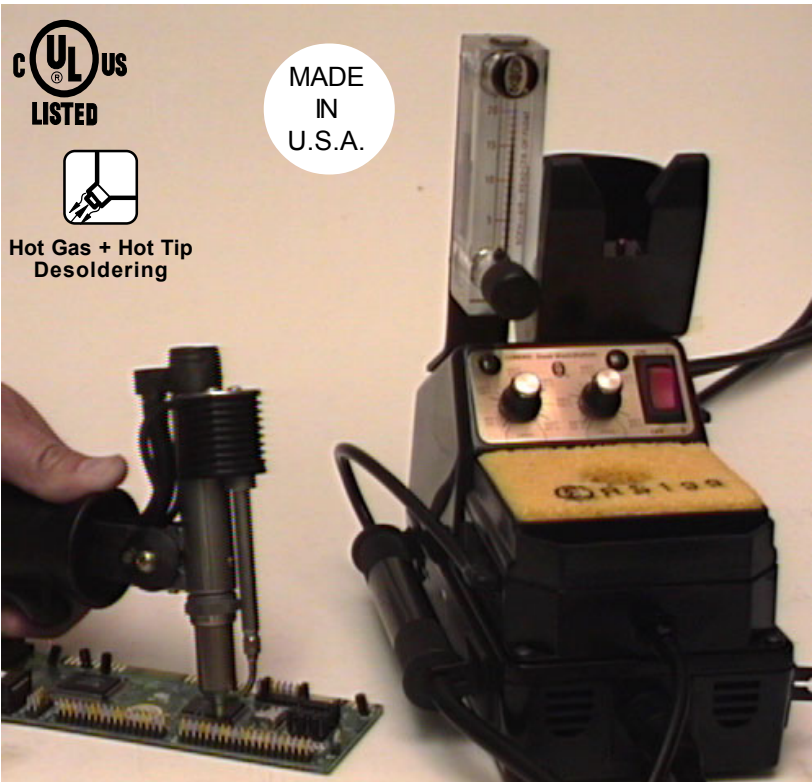
99 Washington St. Melrose MA, 02176

1.800.517.8431 | 781.665.0780 (Fax)

EDSYN^{INC}®

TSX70 SOLDAVAC[®] SMT Reflow Vacuum Workstation

† COMPLIES WITH MIL-S-45743E, MIL-STD-2000, DOD-STD-2000-1B,
WS6536E AND ESD SPEC, DOD-STD-1686, DOD-HDBK-263



Hot Gas + Hot Tip
Desoldering

MADE
IN
U.S.A.

instruction manual



Table of Contents

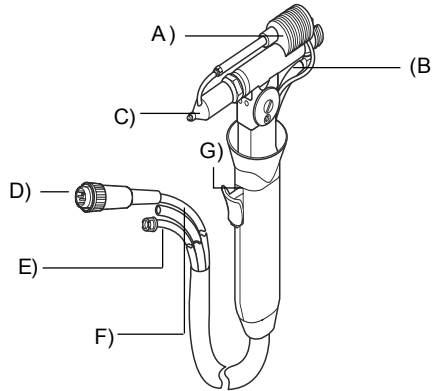
1. Specifications
2. Features
3. Connection & Hook-up
4. Operation
5. Hand Tool Adjustments
5. Tip Replacement
6. Cleaning & Maintenance
7. Calibration
8. Spare Parts Hand Tool
10. Spare Parts Power Supply

SPECIFICATIONS

- ĩ 120V, 60 Hz, 39W - 330W
- ĩ Weight; **Power Supply:** 6.2 lbs. (2.8 kg)
Hand Tool: 13.5 ozs. (383 g)
- ĩ Temperature range of 400°F to 800°F (205°C-425°C).
- ĩ Flow is 22 SCFH (11 Li/min) @ 80 psi, 19 SCFH (9 Li/min) @ 65 psi.
- ĩ Voltage leakage from tip to ground, less than 2 MV.
- ĩ Tip to ground resistance, less than 2 ohms.
- ĩ COMPLIES WITH MIL-S-45743E, MIL-STD-2000, DOD-STD-2000-1B
WS-6536E and ESD SPEC, DOD-STD-1686, DOD-HDBK-263.

Hand Tool FEATURES

- A) Gas Heater.
- B) Desoldering Head Housing.
- C) Desoldering Tip.
- D) 24V Power Input, turn clockwise to engage.
- E) Gas Connector, turn clockwise to engage.
- F) Vacuum Line, connect to AFX73.
- G) Trigger, activates vacuum.
- H) Cleaning Tool.

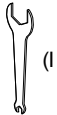
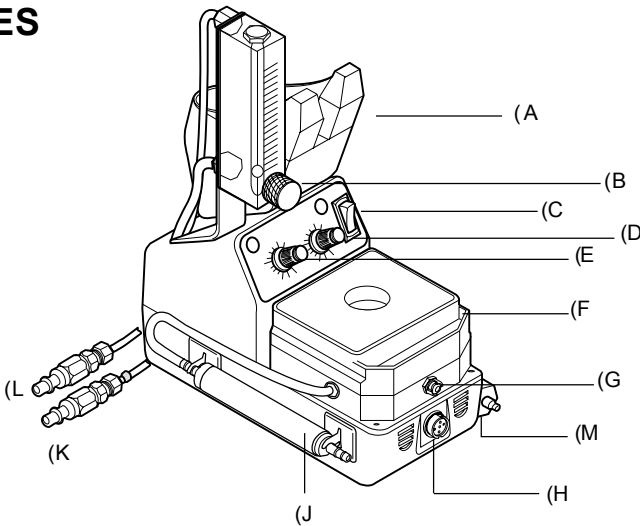


DAMAGED CORD SHOULD ONLY BE REPLACED BY AN EDSYN-CERTIFIED TECHNICIAN

Tool should be placed in Holder when not in use.

Hot Gas flow will stop if Tool is placed in the Holder.

Power Supply FEATURES



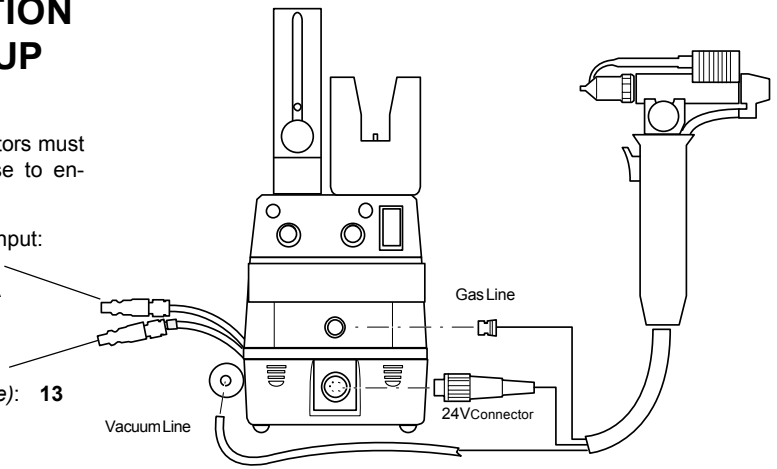
- A) Tool Pod, equipped with micro-switch to activate gas & vacuum.
- B) Gas Flow Control in standard cubic feet per hour delivered to Desoldering Tip.
- C) Power Switch, to activate WorkStation.
- D) Temp. Control Knob, Heater for Desoldering.
- E) Temp. Control Knob, Heater for Gas.
- F) **SH232** Sponge Holder, with cleaning sponge.
- G) Gas Output, controlled flow.
- H) Power output, 24V, controlled
- I) **WT623** Tip Wrench
- J) **AFX73** Filter, NOTE VACUUM FLOW DIRECTION.
- K) Gas Input, color coded sleeve.
- L) Shop air input.
- M) **CSX70** Cleaning Tool

CONNECTION & HOOK-UP

Hand Tool Connectors must be turned clockwise to engage.

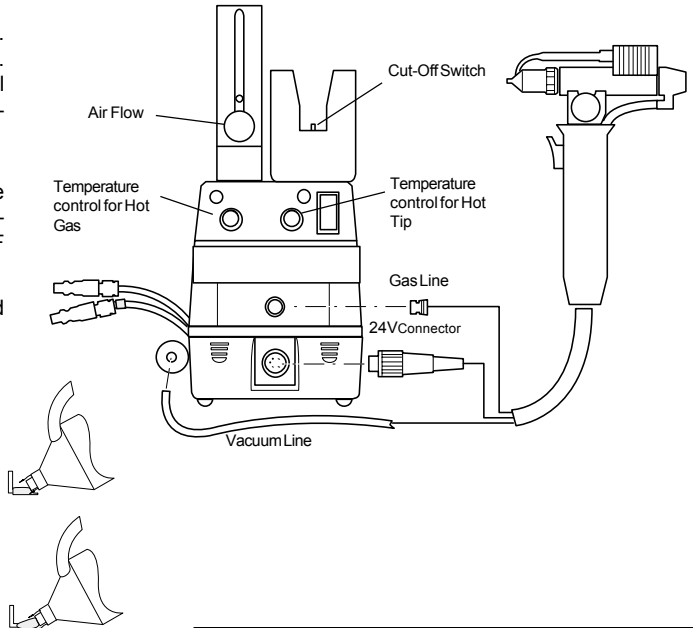
Ideal air pressure input:
60 to 90 psi
413.7 - 620.5 KPA
4.1 - 6.2 bar

Inert Gas Input
(color-coded sleeve): **13**
psi max.
5 SCFH
2.4 Li/min.



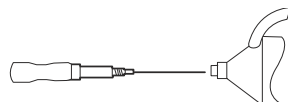
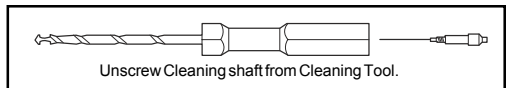
OPERATION

1. Turn on Power Switch.
 Heater indicator lights up.
 Hot Gas & Vacuum will activate if Tool is removed from the Holder.
2. Set both temperature controls to desired temperature. i.e. 600°F (315°C).
3. Adjust air flow to desired setting (3 to 5 SCFH).
4. Place Tip close to working area.
5. When solder reflows, press Trigger to desolder.



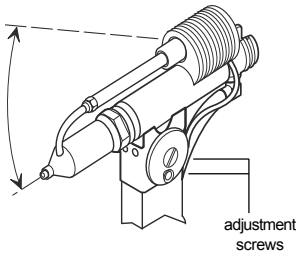
POINTERS:

- ⌈ USE CLEANING SHAFT TO REMOVE ANY OBSTRUCTION IN THE TIP.
- ⌈ ACTIVATE VACUUM IN PULSES RATHER THAN CONTINUOUS SUCTION.

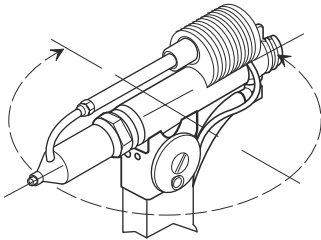


ADJUSTMENT

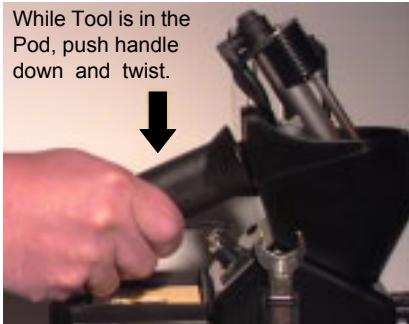
Should be done while the tool is cool.



To tilt the Head Assembly, loosen (2) Adjustment Screws. Tilt the Head Assembly to desired position and retighten screws.



While Tool is in the Pod, push handle down and twist.



Twist until it locks into 1 of it's 4 positions. Twisting counter-clockwise will permit a 180° turn. Twisting clockwise will permit a 90° turn.

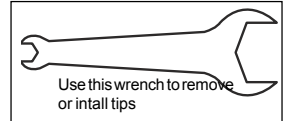
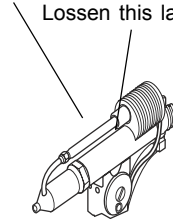
Note: Head Assembly does not make a full 360° turn

CHANGING TIP

REMOVING:

Loosen this first

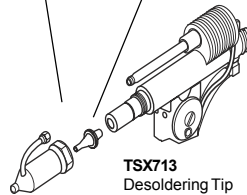
Loosen this last



INSTALLING:

Tighten this last

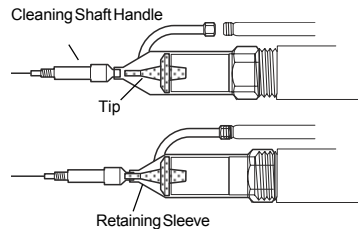
Tighten this first



TSX713
Desoldering Tip

Before tightening the Retaining Sleeve

Check tip alignment by inserting the end of the Cleaning Shaft handle inside the tip, then tighten Retaining Sleeve

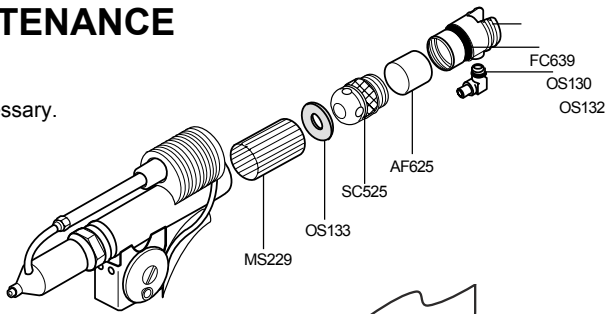


IT IS RECOMMENDED FOR THE OPERATOR TO REMOVE AND INSPECT THE TIP DAILY. REPLACE TIP THERE IS ANY SIGN OF CORROSION. DOING THIS WILL ALSO PREVENT THE TIP FROM SEIZING ON TO THE HEATER.

CLEANING & MAINTENANCE

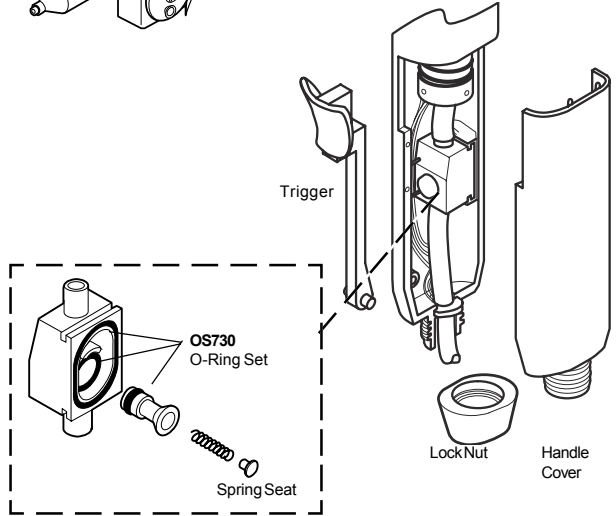
1. Replace AF625 Filter.
2. Clean SC525.
3. Clean or replace OS133 if necessary.
4. Replace MS229.
5. Replace worn-out Tip.

INSPECT OVER-ALL TIP
CONDITION REGULARLY.



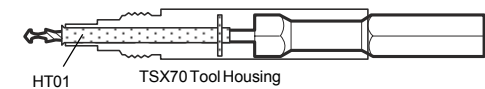
O-Rings Replacement inside Valve Assembly

- a) Unscrew Lock Nut at the end of the Tool Handle.
- b) Remove Handle Cover.
- c) Slide out Valve Assembly while placing your finger over the Spring Seat. **BE CAREFUL NOT TO LET THE SPRING AND THE SPRING SEAT SHOOT OUT FROM THE HOUSING**
- d) Clean all parts with **alcohol only**.
- e) Replace **OS730** O-Ring Set (set of 3).
- f) Lube new O-Rings with **OL111** O-Ring Lube.

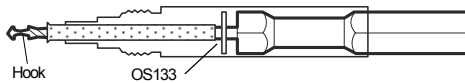


Make sure wires and hoses are not pinched or kinked.

HT01 & OS133 Replacement Cleaning the Desoldering Head Housing



To clean wall of Housing, Remove Mica Sheet.
Rotate Cleaner while pushing in.

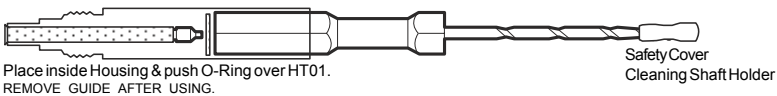


Push Cleaner all the way to remove HT01 Tube.



Remove O-Ring by using the Hook.

Place Cleaning Shaft & Tip/O-Ring Guide in HT01 Tube.

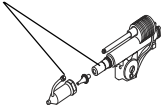


Place inside Housing & push O-Ring over HT01.
REMOVE GUIDE AFTER USING.

CALIBRATION

NOTE: The TI680 has only one input jack. Calibrate each heater separately.

Remove these. Then install thermocouple probes.



For heater A:

- Using option 1, turn on power and set **left** Temperature Control Knob to 400°F (205°C). Allow heater **A** to warm up.
- Adjust **LO**-Temp. Calibration Pot on the left side of the station so the TI680 Meter will read 500°F (260°C).
If you are using option 2, adjust pot so meter will read 640°F (338°C)
- Set Temperature Control Knob to 800°F (427°C).
- Adjust **HI**-Temp. Calibration Pot so the Meter will read 900°F (482°C).
If you are using option 2, adjust pot so meter will read 1120°F (604°C)



For heater B:

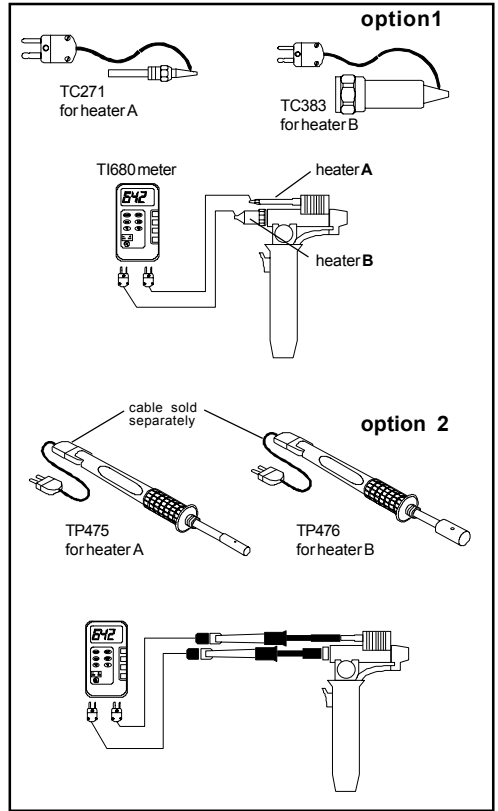
- Using option 1, set **right** Temperature Control Knob to 400°F (205°C). Allow heater **B** to warm up.
- Adjust **LO**-Temp. Calibration Pot on the right side of the station so the TI680 Meter will read 500°F (260°C).
If you are using option 2, adjust pot so meter will read 490°F (254°C)
- Set Temperature Control Knob to 800°F (427°C).
- Adjust **HI**-Temp. Calibration Pot so the Meter will read 900°F (482°C).
If you are using option 2, adjust pot so meter will read 980°F (527°C)






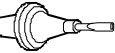
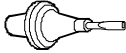
IMPORTANT:

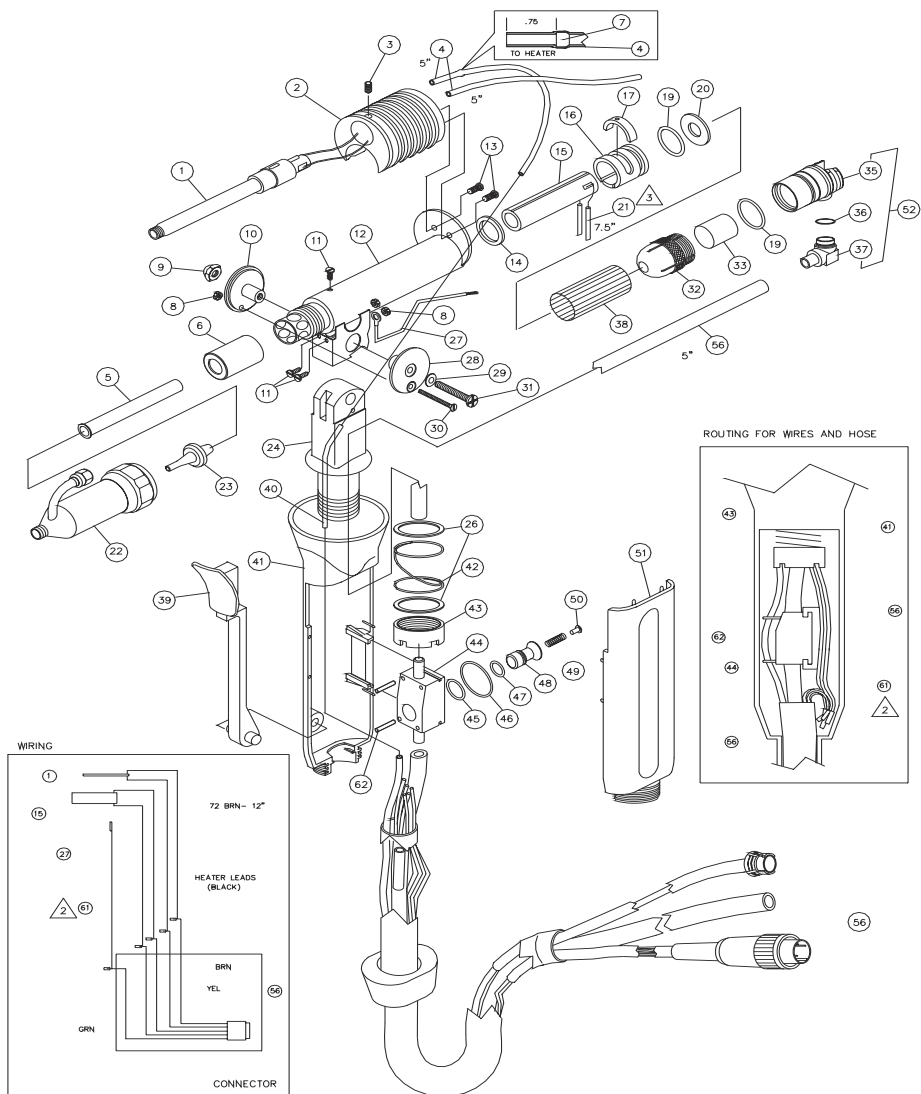
User must understand the principle of wire probe (option 2). See Form.800. Procedure may yield different temperatures than noted above.

THERMOCOUPLE PROBES



SOLDERING TIPS

| | Hole Dia. | Length |
|---|------------------------|-------------------------|
| TSX715 Focus Nozzle  | .09 (2.3 mm) | .55 (14.0 mm) |
| TSX713 Small  | .05 (1.3 mm) | .43 (10.9 mm) |
| TSX716 Round Needle  | .02 (.5 mm) | .80 (20.3 mm) |
| TSX717 Small Oval Needle  | .01 (.3 mm) | .63 (16.0 mm) |
| TSX718 Medium Oval Needle  | .02 (.5 mm) | .80 (20.3 mm) |

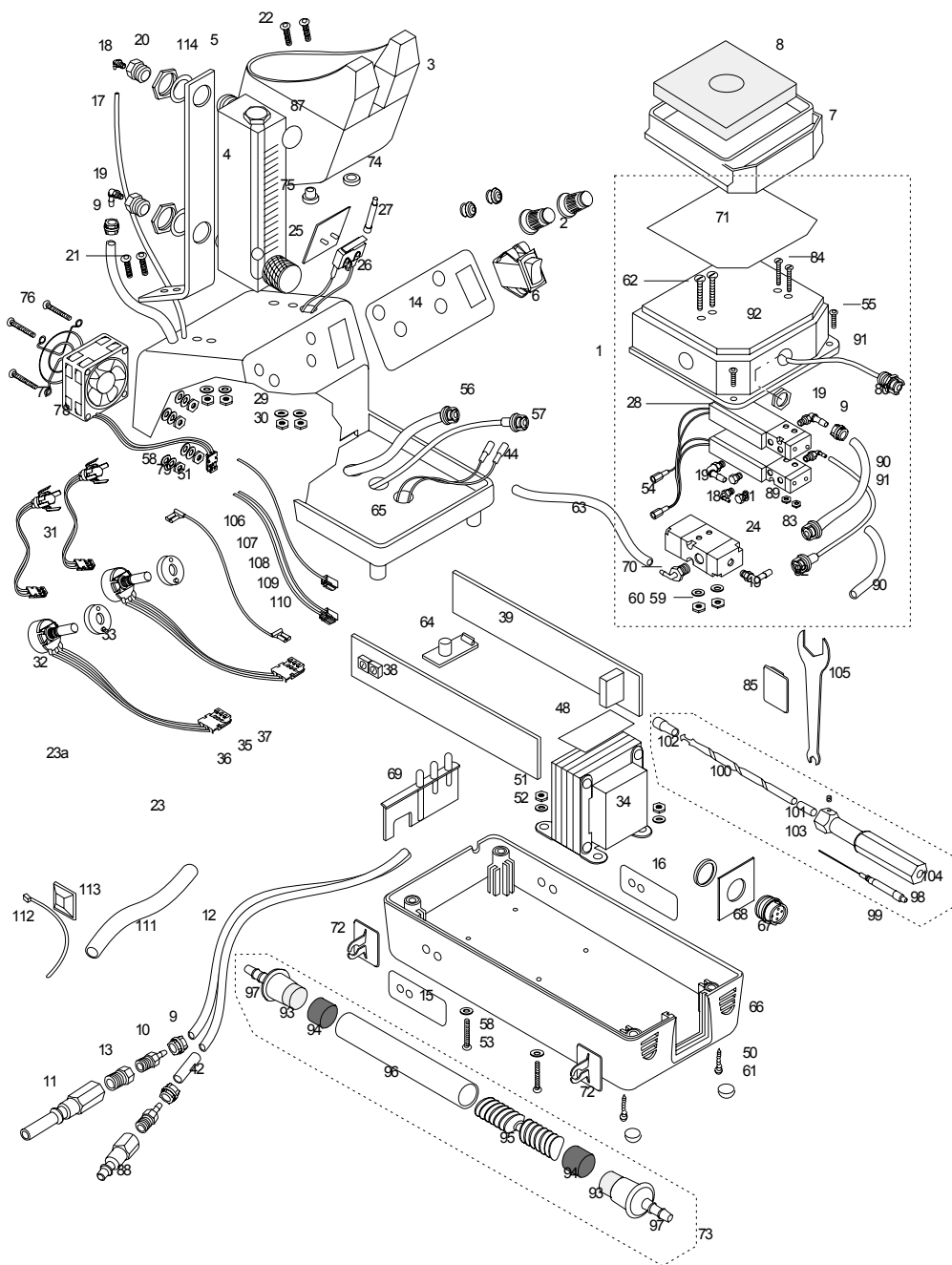


TSX70-1 *SOLDAVAC*^{®/E} SOLDER HANDLING TOOL SPARE PARTS LIST

| ITEM NO. | PART NO. | DESCRIPTION | QTY REQ'D |
|----------|--------------|-------------------------------------|-----------|
| 1 | SR341 | Heater Assy. 24V, Hollow Threaded | 1 |
| 2 | SR342 | Housing, Hot Gas Heater | 1 |
| 3 | SR343 | Set Screw | 1 |
| 4 | HS304 | Low Static Silicone Hose, 3/32 i.d. | 2 |
| 5 | HT01 | Hot Tube | 1 |
| 6 | AC737 | Accumulator Bushing | 1 |
| 8 | SR007 | Nut, Hex, 2-56 | 3 |
| 9 | SR170 | Nut, Hex, Cap, 8-32 | 1 |

| ITEM NO. | PART NO. | DESCRIPTION | QTY REQ'D |
|----------|---------------|--|-----------|
| 10 | SR006 | Index Flange (nut side) | 1 |
| 11 | SR122 | Screw, Pan Hd, Slotted, 2-56 x 1/8 | 3 |
| 12 | SR440 | Housing, Desold Head Assy. | 1 |
| 13 | SR345 | Screw, Pan Hd, Phillips, 4-40 x 3/8 | 2 |
| 14 | SR119 | Teflon Spacer | 1 |
| 15 | SR120 | Heater Element, 24V, 70W | 1 |
| 16 | SR117 | Teflon Bushing | 1 |
| 17 | SR118 | Heater Restrainer | 1 |
| 19 | OS731 | O-Ring for Heater Bushing and End Cap | 2 |
| 20 | OS133 | Silicone Washer | 1 |
| 21 | SR145 | Teflon Braided Fiberglass | 2 |
| 22 | RSX72 | Retaining Sleeve for Heater Assy. | 1 |
| 23 | TSX713 | Desoldering Tip | 1 |
| 24 | SR629 | Head Shaft | 1 |
| 26 | SR126 | Washer, Nylon | 2 |
| 27 | SR121 | Grounding Wire | 1 |
| 28 | SR005 | Index Flange (screw side) | 1 |
| 29 | SR169 | Washer, Flat, .32 O.D. x .17 I.D | 1 |
| 30 | SR008 | Screw, Flat Head, Slotted, 2-56 x 1 | 2 |
| 31 | SR168 | Screw, Pan Head, Phillips, 8-32 x 1 | 1 |
| 32 | SC525 | Solder Cone | 1 |
| 33 | AF625 | Felt Filter (set of 10) | 1 |
| 35 | SR148 | Housing for End Cap | 1 |
| 36 | OS132 | O-Ring for Elbow Connector of End Cap | 1 |
| 37 | SR147 | Elbow Connector of End Cap | 1 |
| 38 | MS229 | Mica Sheet | 3 |
| 39 | SR128 | Trigger | 1 |
| 40 | SR348 | Gas Tube | 1 |
| 41 | SR349 | Handle Base | 1 |
| 42 | SR125 | Spring for Head Shaft | 1 |
| 43 | SR127 | Retaining Nut for Head Shaft | 1 |
| 44 | SR129 | Valve Housing | 1 |
| 46 | OS730 | O-Ring Set for Valve Assy. (3 O-Rings) | 1 set |
| 48 | SR130 | Poppet (O-Ring included) | 1 |
| 49 | SR131 | Spring | 1 |
| 50 | SR132 | Seat for Spring | 1 |
| 51 | SR350 | Handle Cover | 1 |
| 52 | FC639 | End Cap Assy. | 1 |
| 55 | SR352 | Fitting, Quick Disconnect, Female | 1 |
| 56 | HL603 | Hose, Low Static Silicone, 3/16 i.d. | 5" |
| 57 | SR353 | Plug, Male Cable Connector | 1 |
| 60 | SR393 | Retaining Nut for Handle | 1 |
| 62 | SR143 | Wire Guide, 3/8 Length, Nylon | 2 |
| 68 | SR335 | Valve Assy. | 1 |
| 69 | SR356 | Hose and Wiring Assy. | 1 |

TSX70-2 *SOLDAVAC*®/FE SOLDER HANDLING TOOL SPARE PARTS LIST

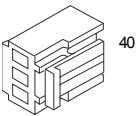


| ITEM NO. | PART NO. | DESCRIPTION | QTY REQ'D |
|----------|--------------|---|-----------|
| 1 | SR408 | Solenoid & Vacuum Ejector Assy. | 1 |
| 2 | SR068 | Knob, Temperature Control, Front Panel | 2 |
| 3 | SR376 | Tool Pod, Holder for Hot Gas Tool | 1 |
| 4 | SR375 | Flow Meter | 1 |
| 5 | SR443 | Mounting Bracket for Flow Meter | 1 |
| 6 | SR065 | Power Switch | 1 |
| 7 | SH232 | Sponge Holder | 1 |
| 8 | RS199 | Cleaning Sponge | 1 |
| 9 | LC363 | Locking Sleeve for 1/4" Hose (set of 5) | 4 |
| 10 | HB357 | Hose Barb Fitting, 1/8 i.d. 1/8-27 NPT | 2 |
| 11 | SR377 | Fitting, Quick-Disconnect Air Input, Male, Long Nose | 1 |
| 12 | SR378 | Hose, 1/8 i.d. Twin Tubing Polyurethane, Black (sold per foot) | 6 ft. |
| 13 | SR379 | Reducer, Fitting, 1/4 to 1/8 | 1 |
| 14 | SR380 | Label, Front Control Panel | 1 |
| 15 | SR310 | Label, Temperature, External Calibration, Right Side | 1 |
| 16 | SR311 | Label, Temperature, External Calibration, Left Side | 1 |
| 17 | SR351 | Hose, 1/16 i.d. Polyurethane, Black (sold per foot) | 15" |
| 18 | SR381 | Elbow Connector, 1/16 i.d. 10-32 UNF (set of 3) | 3 |
| 19 | SR382 | Elbow Connector, 1/8 i.d. 10-32 UNF (set of 3) | 4 |
| 20 | SR383 | Reducer, Fitting, 1/4-18 npt to 10-32 UNF (set of 3) | 2 |
| 21 | SR384 | Screw, Button Head, Socket, 8-32 x 1/2 | 2 |
| 22 | SR385 | Screw, Button Head, Socket, 8-32 x 5/8 | 2 |
| 23 | SR386 | Power Cord Assy. w/ Fuse and Connectors | 1 |
| 23a | SR026 | Power Cord Only | 1 |
| 24 | SR418 | Vacuum Generator, Micro-Ejector, Single/Double Step | 1 |
| 25 | SR115 | Retainer Plate for Micro Switch | 1 |
| 26 | SR113 | Micro Switch, Tool Holder | 1 |
| 27 | SR114 | Push Rod For Micro Switch | 1 |
| 28 | SR419 | Solenoid Valve, 24V, Normally Close, 4-Way | 1 |
| 29 | SR431 | Washer, Flat, #10 | 4 |
| 30 | SR388 | Nut, Hex, 8-32 | 4 |
| 31 | SR246 | LED Assy. Green, Lens Included | 2 |
| 32 | SR243 | Potentiometer Assy. 5K | 2 |
| 33 | SR255 | Spacer, 1" Dia. For Potentiometer | 2 |
| 34 | SR387 | Transformer, 24V, 4-Pt. Mounting | 1 |
| 35 | SR106 | Fuse, Pigtail, 250V, 3A | 1 |
| 36 | SR370 | Connector, Parallel, Solderless, Non-Insulated | 2 |
| 37 | SR371 | Shrink Sleeve, Clear, 1/4 Dia. (sold per foot) | 2" |
| 38 | 15242W45 | PCB Assy. 24V, 45W, 2-Wire | 1 |
| 39 | 15242W70H10 | PCB Assy. 24V, 70W, 2-wire | 1 |
| 40 | SR432 | Housing, VH Connector, 3 Circuit (set of 3) | 2 |
| 41 | SR389 | Housing, VH Connector, 2 Circuit (set of 3) | 1 |
| 42 | SR390 | Shrink Sleeve, Blue, 3/64 Dia. (sold per foot) | 1" |
| 43 | SR433 | Connector, Flag, Non-Insulated, 22-18 AWG. .187 Tab (set of 5) | 7 |
| 44 | SR437 | Connector, Female, Fully Insulated, Red, 22-18 AWG. .187 Tab (set of 5) | 2 |
| 45 | SR436 | Receptacle, HR Connector, 2 Circuit (set of 3) | 1 |

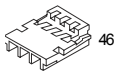
| ITEM NO. | PART NO. | DESCRIPTION | QTY REQ'D |
|----------|--------------|---|-----------|
| 46 | SR438 | Receptacle, HR Connector, 3 Circuit (set of 3) | 1 |
| 47 | SR435 | Connector, Flag, Non-Insulated, .250 Tab (set of 5) | 3 |
| 48 | SR434 | Insulator, Aramid Paper (1-3/16 x 2-1/2) | 1 |
| 49 | SR400 | Ring Tongue Connector, #6, Non-Insulated (5 per set) | 2 |
| 50 | SR011 | Screw, Round Head, Phillips, 6-18, Self-Tapping | 4 |
| 51 | SR017 | Nut, Hex, 6-32 | 9 |
| 52 | SR139 | Washer, Star, Lock, #6 | 8 |
| 53 | SR144 | Screw, Round Head, Slotted, 6-32 x 1/2 | 4 |
| 54 | SR420 | Connector, Male, Red, Fully Insulated, 22-18 AWG, .187 Tab (set of 5) | 2 |
| 55 | SR401 | Screw, Button Head, Socket, 6-32 x 1/2 | 2 |
| 56 | SR402 | Coupling, Female Quick-Disconnect Fitting, For 1/8 Hose | 1 |
| 57 | SR352 | Coupling, Male Quick-Disconnect Fitting, For 1/16 Hose | 1 |
| 58 | SR016 | Washer, Flat, #6 | 4 |
| 59 | SR421 | Nut, Hex. 4-40 | 2 |
| 60 | SR422 | Washer, Flat, #4 | 2 |
| 61 | SR251 | Rubber Foot (set of 4) | 4 |
| 62 | SR423 | Screw, Flat Head, Phillips, 4-40 x 1 | 2 |
| 63 | HS307 | Hose, Low Static Silicone, 1/8 i.d. (sold per foot) | 9" |
| 64 | SR403 | PCB Assy. Power Supply Board For Cooling Fan | 1 |
| 65 | SR404 | Top Cover, w/ Threaded Insert, For Power Supply | 1 |
| 66 | SR405 | Bottom Base, For Power Supply | 1 |
| 67 | SR406 | Connector, DIN, Female, Socket, 5-Pin Circular | 1 |
| 68 | SR430 | Plate, Molded Frame For Connector | 1 |
| 69 | SR241 | Strain Relief for Power Cord | 1 |
| 70 | SR424 | Elbow Connector, 3/16 i.d. 1/8 NPT, For 1/8" Hose | 1 |
| 71 | SR409 | Label, Cleaning Instruction For TSX70 | 1 |
| 72 | SR439 | Clip, Holder for Tools and Accessories, Self-Adhesive | 4 |
| 73 | AFX73 | Air Filter Assy. Flux Condenser | 1 |
| 74 | SR410 | Spacer, Flat, For Tool Pod, Back Side | 1 |
| 75 | SR411 | Spacer, Flat with Stem, For Tool Pod, Front Side | 1 |
| 76 | SR412 | Screw, Round Head, Slotted, 6-32 x 1.25 | 4 |
| 77 | SR413 | Fan Guard, Grill For Cooling Fan | 1 |
| 78 | SR414 | Fan Assy. 12V w/ Connector | 1 |
| 79 | SR366 | Washer, Split, Lock, #6 | 2 |
| 80 | SR425 | Coupling, Male, Quick-Disconnect for 1/16 Hose (Panel Mount) | 1 |
| 81 | SR426 | Plug, Hex. 250 Dia. | 2 |
| 82 | SR427 | Coupling, Female, Quick-Disconnect, 1/16 Hose | 1 |
| 83 | SR428 | Coupling, Male, Quick-Disconnect, 1/8 Hose | 1 |
| 84 | SR008 | Screw, Flat Head, Slotted, 2-56 x 1 | 2 |
| 85 | SR416 | Holder, Wrench Hanger, Self-Adhesive | 1 |
| 86 | SR415 | Terminal, Crimp for VH Connector (10 per bag) | 10 |
| 87 | SR229 | Medallion, EDSYN Logo, Self-Adhesive | 1 |
| 88 | HB359 | Fitting, Quick-Disconnect Air Input, Male | 1 |
| 89 | SR007 | Nut, Hex. 2-56 | 2 |

| ITEM NO. | PART NO. | DESCRIPTION | QTY REQ'D |
|----------|--------------|---|-----------|
| 90 | SR283 | Hose, 1/8 i.d. Polyurethane, Black (sold per foot) | 2.5" |
| | | | 3.5" |
| 91 | SR429 | Hose, 1/16 i.d. Polyurethane, Clear (sold per foot) | 1.5" |
| | | | 3.5" |
| 92 | SR417 | Cover for Solenoid & Vacuum Ejector Assy. | 2 |
| 93 | AF629 | Felt Filter (set of 10) | 2 |
| 94 | AF040 | Foam Filter (set of 10) | 2 |
| 95 | SR304 | Flux Condenser, Cooling Fin | 1 |
| 96 | SR305 | Barrel, Filter Housing | 1 |
| 97 | SR266 | End Cap for Filter | 2 |
| 98 | CSX71 | Cleaning Shaft for Soldering Tip | 1 |
| 99 | CSX70 | Cleaning Tool for Solder Debri Removal (CSX71 included) | 1 |
| 100 | SR307 | Drill, Cleaner and Hook | 1 |
| 101 | SR308 | Set Screw, 10-32 x 3/16, Socket | 1 |
| 102 | SR309 | Cover for Drill and Hook | 1 |
| 103 | SR444 | Bushing, 1/4 O.D. x 3/4 Length, Stainless Steel Tubing | 1 |
| 104 | SR306 | Handle for Cleaning Tool | 1 |
| 105 | WT623 | Wrench for Soldering Tip | 1 |
| 106 | SR442 | Wire, White, 24 AWG (sold per foot) | 4" |
| 107 | SR445 | Wire, Black, 22 AWG (sold per foot) | 12" 3@ |
| | | | 10.5" 2@ |
| | | | 4.5" 2@ |
| | | | 2" 3@ |
| 108 | SR446 | Wire, White, 22 AWG (sold per foot) | 12" 2@ |
| | | | 4.5" 2@ |
| | | | 11.5" |
| | | | 15" |
| 109 | SR447 | Wire, Red, 22 AWG (sold per foot) | 12" |
| 110 | SR448 | Wire, Green, 18 AWG (sold per foot) | 5" |
| 111 | HS320 | Hose, Low Static, Silicone, 1/4 Dia. (sold per foot) | 3" |
| 112 | SR050 | Cable Tie (set of 5) | 7 |
| 113 | SR051 | Mount for Cable Tie (set of 2) | 1 |
| 114 | SR126 | Washer, 5/8 i.d. Nylon | 2 |

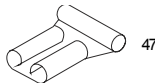
Connectors



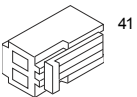
40



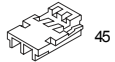
46



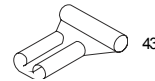
47



41



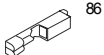
45



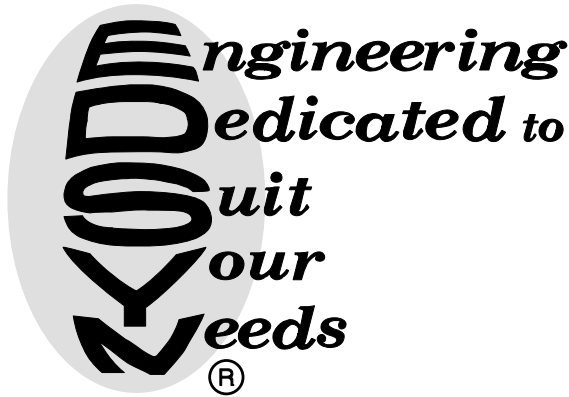
43



49



86



ALL RIGHTS RESERVED.
NO PART OF THIS PUBLICATION INCLUDING THE INDIVIDUAL ICONS
MAY BE REPRODUCED OR UTILIZED IN ANY FORM OR BY ANY MEANS
WITHOUT THE PERMISSION OF EDSYN, INC.

THE NAMES LONER, SOLDAPULLT, SOLDAVAC, ATMOSCOPE
AUTO-VAC, IDLE-REST, OCTAVAC AND KLATCH
ARE REGISTERED TRADEMARKS OF EDSYN, INC.



Intellectual
Property

MOST PRODUCTS ARE COVERED BY U.S. AND
FOREIGN PATENTS AND PENDING APPLICATIONS.

DESIGN, COLOR AND MATERIALS
SUBJECT TO CHANGE WITHOUT NOTICE.

TIP STYLE ON SOLDERING, DESOLDERING AND HOT AIR TOOLS MAY VARY.

PRINTED IN U.S.A.

©Copyright EDSYN, Inc. 1998



 **Test Equipment Depot**

99 Washington St. Melrose MA, 02176

1.800.517.8431 | 781.665.0780 (Fax)

Visit us at www.TestEquipmentDepot.com