

UNI-T®



UTi256G/UTi384G
Professional Thermal Imager
User Manual

P/N:110401111326X

Preface

Dear user,

Hello! Thank you for purchasing the new UTi256G /UTi384G Professional Thermal Imager. In order to use this product correctly, please read the full text of this manual carefully before using it, especially the content of the "Warning" part.

If you have read the full text of this manual, it is recommended that you keep this manual properly and place it with the accessories of the thermal imager or in a place where you can refer to it at any time for future use.

Limited Warranty and Limited Liability

The company guarantees that this product will be free from any defects in materials and workmanship within one year from the date of purchase. This guarantee does not apply to damage caused by accident, negligence, misuse, modification, pollution and abnormal operation or handling. The distributor has no right to give any other guarantee in the name of the company. If you need warranty service during the warranty period, please contact your nearest authorized service center to obtain the product return authorization information; Then send the product to the service center, and attach the product problem description.

This guarantee is the only compensation you can get. In addition, the company does not provide any express or implied warranty, such as the implied warranty applicable to a special purpose. At the same time, the company will not be responsible for any special, indirect, incidental or consequential damage or loss caused by any reason or speculation. Since some states or countries do not allow limitations on implied warranty and incidental or consequential damage, the above limitations and provisions of liability may not apply to you.

Warnings

- 1) Please try to keep the device stable and avoid violent shaking during its use;
- 2) Please do not use or store the instrument at a temperature higher than the permitted operating temperature or storage temperature of the device;
- 3) Please do not direct the thermal camera at very high intensity radiation sources such as the sun, carbon dioxide lasers or arc welders etc;
- 4) Please do not block the holes on the device;
- 5) Do not knock, throw or shake the instrument and accessories to avoid damage;
- 6) Please do not disassemble the device by yourself, which may cause its damage and loss of warranty rights;
- 7) Please do not use soluble or similar liquids for the device and cables, which may cause damage to the device;
- 8) Please do not use the device at a temperature higher than its operating temperature, which may cause damage;
- 9) Please observe the following measures when wiping the device:
 - For the non-optical surface, use a clean soft cloth to wipe the non-optical surface of the thermal camera when necessary;
 - For the optical surface, please avoid staining the optical surface of the lens when using the thermal camera and especially avoid touching the lens with your hands because sweat stains on your hands will leave a mark on the lens glass and may corrode the optical coating on the glass surface. When the surface of the optical lens is contaminated, wipe it carefully with specialized lens paper;
- 10) Please do not place the battery in a high temperature environment or near high-temperature objects;
- 11) Please do not make the positive and negative poles of the battery short-circuited;
- 12) Please do not place the battery in a humid environment or water.
- 13) Do not expose the equipment to dust or damp environment. When using in the environment with water, avoid splashing water on the instrument. Cover the lens cover when not using the instrument.
- 14) When this equipment is not used, please put the instrument and all accessories in a special packing box.
- 15) Avoid using the random SD card for other purposes.
- 16) The graphic information of the goods used in the product introduction. The actual products have differences in materials and details due to different batches. Please understand, and please subject to the receipt of specific physical objects.
- 17) The experimental data provided in the page are theoretical values, which are all from the internal laboratory of our company, and it's only for reference. Customers cannot use it as a reference for ordering and shopping. It is hereby explained! If you have any questions, please contact customer service for detailed consultation.

Contents

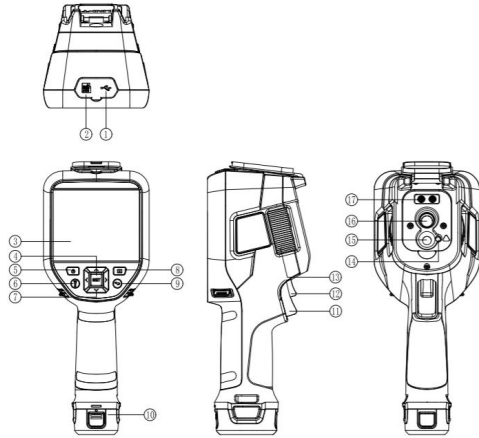
Chapter 1 Technical Specifications	5
Chapter 2 Introduction to Product Components	7
Chapter 3 List of Interface Areas	8
Chapter 4 Shooting	13
Chapter 5 Gallery	14
Chapter 6 Setting	16
Chapter 7 Connection with External Equipment	21
Chapter 8 PC Analysis Software	22
Chapter 9 Mobile APP Software	22
Chapter 10 Summary of Common Problems	23

Chapter 1 Technical Specifications

Devices	UTi256G	UTi384G
Detector Type	Uncooled Focal Plane	
Spectral Range	7. 5~14μm	
Pixel Size	17μm	
IR Resolution	256x192	384x288
FOV	28°x20°	42°x30°
Image Frame Rate	30Hz	
NETD	40mk	
Spatial Resolution	1. 91mrad	
Focus	Manual	
Temperature Measurement Range	-20°C~550°C	
Accuracy	±2°C/±2% (take the maximum value, -10°C~550°C normal temperature 25°C)	
Display	3. 5" Touch Screen (640x480)	
Digital Camera Resolution	5MP	
Photo Capture	√	
Video Recording	x	√
Hi/Lo Spot Tracking	√	
Fusion	√	
PIP	√	
On Screen Analyzer	3 Points/3 Rectangles/3 Circles/3 Lines	5 Points/5 Rectangles/5 Circles/5 Lines
Parameter	Emissivity, Optical Transmittance, Reflection Temperature, Dew Point	
Digital Zoom	2x, 4x	

Color Alarm	When the set temperature threshold is exceeded, the cursor color changes to alarm.
Palette	Red hot, High Contrast Rainbow, Rainbow, Lava, Ironbow, Black hot, White hot
Bluetooth	√
Voice Recording	√
WiFi Photo Download	√
WiFi Live Video	√
Mobile APP	√
PC Analysis Software	√
Temperature Unit	K°C/°F
Language	English, French, German, Italian, Spanish, Swedish, Czech, Polish, Russian, Portuguese, Arabic, Japanese, Korean
Auto Power Off	Off, 5 minutes, 10 minutes, 15 minutes, 20 minutes
Storage	Internal Storage 8 GB, External Storage Micro SD Card 32GB
USB	Type-C
LED Light	√
Laser Pointer	Class 2 Laser, red
Button	Power Button, Lighting Button, Setting Button, Direction Button, Library Button, Return Button, Camera Trigger Button, Laser Trigger Button
Battery Type	Replaceable Battery Pack
Battery Operating Time	About 5 Hours
Charging System	Type-C Direct Charging
Working Temperature	-10°C~50°C
Storage Temperature	-40°C~60°C
Drop Proof	2m
IP Rating	IP54
Certificates	CE, FCC, UKCA, RoHS

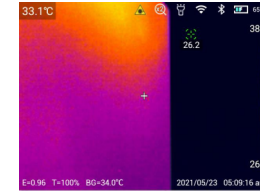
Chapter 2 Introduction to Product Components



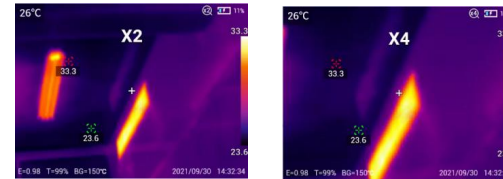
Item	Description	Item	Description
1	USB Type-C Interface	10	Battery Assembly
2	Micro SD Card Slot	11	Camera Trigger
3	LCD	12	Laser Trigger
4	SET Button	13	Focusing Wheel
5	Power Button	14	Laser
6	Lighting Button	15	Visible Light Camera Window
7	Direction Button	16	Infrared Thermal Image Window
8	Library Button	17	LED Light
9	Return Button		

Chapter 3 List of Interface Areas

Real-Time Image Interface



1. Top Status Bar: Display laser, digital zoom, flashlight, WiFi, Bluetooth, battery power and charging status;
2. Bottom Status Bar: Display emissivity, optical transmittance, reflection temperature, date and time;
3. Digital Zoom: Double finger zoom in or out for electronic zoom in or out, supporting 2x/4x zoom;

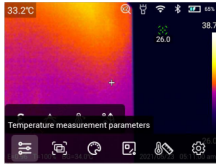


4. Color Band: The image is consistent with the color band;
5. Menu Bar: Click the screen to open the hidden menu bar to set parameters;
6. Slide Menu: Slide screen at the top, enter the slide menu interface, and you can make quick settings.

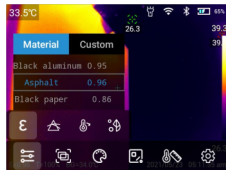
Menu Bar

Click the screen in the real-time image interface to open the menu bar, which includes: temperature measurement parameters, image mode, palette, temperature analysis, isotherm, and shortcut operations for setting.

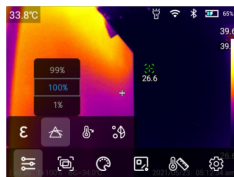
1. Temperature Measurement Parameters: Emissivity, optical transmittance, reflection temperature and dew point can be set according to the target temperature;



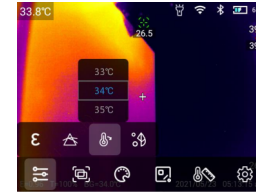
- Emissivity: Click to enter the emissivity interface. Select [custom]. Slide the corresponding value to modify. The range is controlled within 0.01-1.00. Touch other areas or press the return key to exit and save; Click [material], and you can select according to the emissivity of the target.



- Optical Transmittance: Select in the range of 1% - 100%.



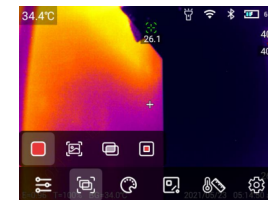
- Reflection Temperature: Select in the range of -40~2000°C.



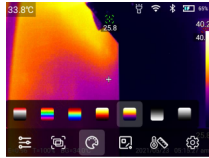
- Dew Point: The ambient temperature and relative humidity can be set in the dew point interface. Given the ambient temperature and relative humidity, the dew point value can be figured out.



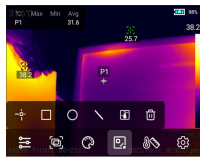
2. Image Mode: Including Thermal, Visual Image, Fusion, PIP



3. Palette: Red hot, high contrast rainbow, rainbow, lava, ironbow, black hot, white hot;



4. On Screen Analyzer: Point, rectangle, circle and line graphics can be added, and the temperature differences of the analysis objects can be compared;




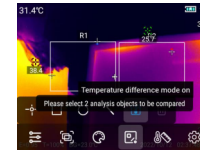
- Add / delete analysis object: click the corresponding analysis object icon to add an analysis object; Click the  icon to delete the analysis object;



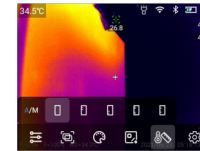
- Long press any analysis object through the touch screen, and the system will automatically pop up the object editing page;
 - Temperature mark: Maximum temperature, minimum temperature and average temperature;
 - Center: Center the analysis object
 - Delete: Deletes the current analysis object.





- Change the size of the analysis object: touch to select the circular, rectangular and line analysis objects, and the nodes are in the selected state and the color is blue. Move any node to change the area range of the analysis object.

- Temperature Difference Mode: Add at least 2 analysis objects, click the  icon, select the analysis object to compare and display the temperature difference.

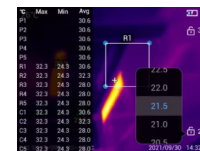


5. Isotherm: Upward isotherm line, downward isotherm line, isotherm outside the interval and isotherm inside the interval can be set for automatic dimming, and manual dimming can be set manually.



- In Automatic Dimming Mode:
 - Upward Isotherm: click  to enter the upward isotherm image mode;
 - Downward Isotherm: click  to enter the downward isotherm image mode;
 - Isotherm outside the interval: click  to enter the isotherm image mode outside the interval;
 - Isotherm inside the interval: click  to enter the isotherm image mode in the interval.

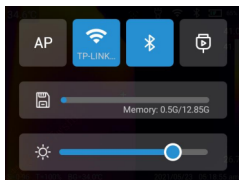
- In Manual Dimming Mode:



Touch and click the highest or lowest temperature value on the ribbon bar to pop up the corresponding value option. Select the appropriate high or low temperature value, and the image dimming changes synchronously.

Slide Menu

In the real-time image interface, the finger slides down from the top of the screen to pop up the sliding menu. In this interface, users can view the storage capacity of the local memory or external SD card, and can also perform some shortcut operations, including brightness, AP, WiFi, Bluetooth, USB virtual network card and other settings.




Chapter 4 Shooting

Photo Capture

In the setting menu, set the photographing mode to photographing. In the real-time preview state, press the 【Trigger】 button to take photos.

Video

In the setting menu, set the photographing mode to video recording. In the real-time preview state, press the 【Trigger】 button to record, and then press the 【Trigger】 button again to end the recording.

 Note: Only UTi384G supports video recording.

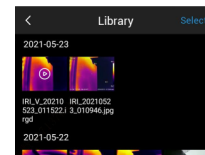
Timer/Time-lapse Photography

In the setting menu, set the photographing mode as timed photography, and set the time and number. Press the 【Trigger】 button in the real-time preview state to start timed photography, and press the 【Trigger】 button again to end photographing.

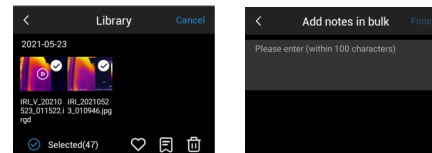
Chapter 5 Gallery

Gallery Playback

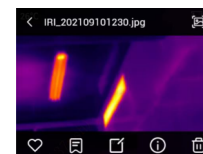
1. Press the 【Library】 button to enter the gallery preview interface;









2. Click 【Select】 in the upper right corner to select pictures, and then carry out batch collection, batch annotation, and batch deletion of pictures.

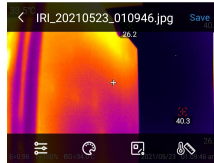


Picture Editing

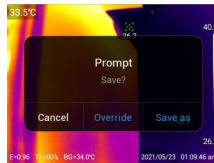


1. Click any picture in the gallery to enter the large picture display interface;
2. Click  button to view the visible light picture corresponding to the current picture;
3. Click  button to collect the current picture;
4. Click  button to annotate the current picture, including text annotation, voice annotation and visible light annotation;
5. Click  button to view the specific information of the current picture;
6. Click  in the lower right corner to delete the current picture;
7. Click  button to enter the picture editing;

8. In the picture editing interface, you can modify the temperature measurement parameters, palette, temperature analysis and isotherm of the picture, and save the modified picture. Refer to the setting method in the menu bar.

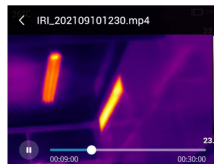


9. Image Saving: you can choose the way to save the image, including cancel, overwrite and save as.



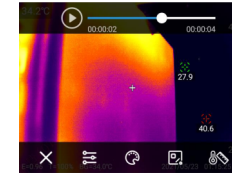
Video Editing

1. Click MP4 video in the gallery to enter the video interface;



- MP4 Video: It can be played, dragged and paused.

2. Click Irgd video in the gallery to enter the video interface;



- Irgd video operation: you can play, pause and drag the video to play, and you can modify the temperature parameters of the video. Refer to the setting method in the menu bar.

Chapter 6 Setting


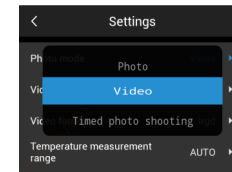
Click  in the menu bar to enter the setting interface.

Photo Mode

You can choose the photographing mode: photo capture, video recording and time-lapse photography.



In the photo capture mode, you can choose whether to keep the current JPG/visible light resolution;

In video recording mode, you can choose video storage method and video format;

In the time-lapse photography mode, you can select the time interval, the number of images, and whether to retain only the current JPG/visible light resolution.

Temperature measurement Range

It can be selected from -20~150°C, -20~550°C and AUTO.

Temperature Alarm

The alarm temperature thresholds are divided into high temperature and low temperature:

Turn on the high temperature alarm switch, and the user can set the alarm temperature threshold as required, such as (35°C). Return to the real-time image interface. If the temperature in the scene is higher than 35°C, the device will have a high temperature icon to alarm until the alarm ends;

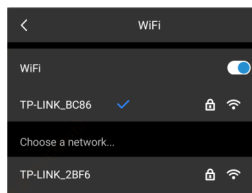
Turn on the low temperature alarm switch, and the user can set the alarm temperature threshold as required, such as (32°C). Return to the real-time image interface. If the temperature in the scene is lower than 32°C, the device will have a low temperature icon to alarm until the alarm ends;

If the high temperature alarm and low temperature alarm switches are turned on at the same time, the high temperature + low temperature alarm will be triggered.

Brightness


Slide to adjust the brightness of the screen.

Data Connection

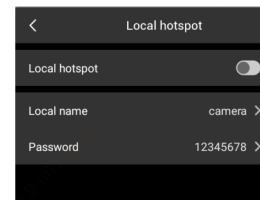


WiFi

1. Turn on the WiFi switch to search the nearby network;
2. Select the network to be connected. Enter the password and connect.

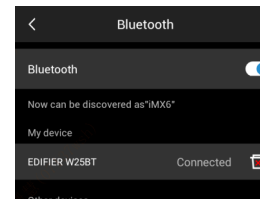
 Note: To ensure reliable WiFi signal connection and stable data transmission, please to ensure that the connection distance is within 10m and there are no obstacles (such as partition walls).

Local hotspot



In the configuration interface, enter a valid hotspot name camera, password 12345678, and click OK to save it successfully. Click to open the hotspot switch, and the hotspot can be searched for connection.

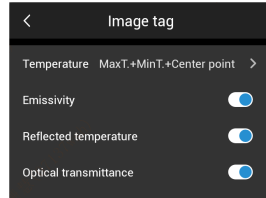
Bluetooth



1. Turn on the Bluetooth headset, press and hold the call button for 3 seconds to enter the pairing mode;
2. Turn on the Bluetooth switch, and the system will automatically search for Bluetooth devices, and select Bluetooth headsets in the device list for pairing;
3. After pairing, the headset will try to reconnect each time it is turned on.

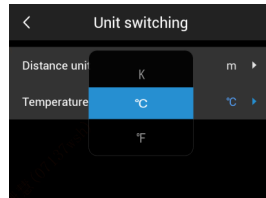
Image Tag

Click the image tag to turn on the temperature, emissivity, reflection temperature, optical transmittance, color band, time and date, battery power, and display it on the real-time image.

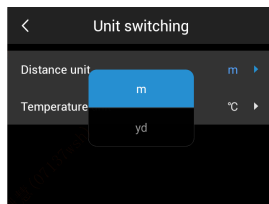


Unit Switching

Users choose the temperature units according to their own operating habits: Celsius, Fahrenheit, Kelvin.



Users choose the distance unit according to their own operation habits: meters and yards.



Target Distance

The distance can be selected within the range of 0.5~3.0m according to the distance of the target.

Auto Power Off

Users set automatic shutdown according to their own operating habits, including: off /5min/10min/15min/20min.

Language Switch

Users can choose to store images to TF card or memory according to their own needs.

Language


Provide multi language switching.

Date and Time

Manually set the system date and time.

Local Upgrade

Put the upgrade package in the /gcamera/update directory. Click "start upgrade", and the latest upgrade package is detected. Click "upgrade", and restart the device to upgrade to the latest version after the upgrade.

 Note: Maintain sufficient power during the upgrade. If you have any questions during the upgrade process, contact the manufacturer in time.

Restore Factory

Please operate carefully to restore the machine to the factory state.

Synchronize Data

Deal with the problem that files cannot be viewed due to factors such as changing SD cards and using each other.

Version Information

You can view the product software version and other related information.

Version information	
Name	UTi384G
SN	
Software version number	V1.0.15.20220726
System version number	V1.0.9.20220718
Firmware version number	V1.1.6.20220701_ V1.0.4.20220622
MAC	60:09:c3:17:8e:e5

Chapter 7 Connection With External Equipment

This product can use USB data cable to connect with external devices.

1. View internal storage files.

After connecting the USB cable to the computer, open my computer, check the internal storage disk information. Click to enter the memory device, and find the folder where the pictures are stored. The specific path is... UNIT\ Internal Storage Device \DCIM\GCamera\Sourceimage.

» This PC » UNIT » Internal Storage Device » DCIM » GCamera » Sourceimage

Note: The file name beginning with IRI is infrared image, and the file name beginning with VIS is visible image.

2. Check the TF card file.

If you need to save the captured pictures into a TF card, first enter settings - image storage. Select the storage medium as a TF card, and then take photos to save the files into the TF card.

Use the USB cable to connect to the computer. Open my computer, and check the internal storage disk information. Click to enter the memory device, and the path is... \UNIT\ SD Card \DCIM\GCamera\Sourceimage

» This PC » UNIT » SD Card » DCIM » GCamera » Sourceimage

Note: The file name beginning with IRI is infrared image, and the file name beginning with VIS is visual image.

Chapter 8 PC Analysis Software

Please refer to the download guide to log in to the official website of our company to download the PC software and complete the installation.

Note: For the operation method of PC software, you can open user manual from the help option of the software operation interface.

Chapter 9 Mobile APP Software

Please search "Thermal link" in the app store for IOS devices.

Android devices have the following ways to obtain apps:

- Please search for "Thermal link" in the play store;
- Please refer to the download guide and log in to the official website of Uni-Trend to download.

Note: For the operation method of the APP software, you can open the app user's operation manual from the help option of the software setting interface.

Chapter 10 Summary of Common Problems

Problems	Reasons	Measures
Unable to power on	Low battery	Recharge the battery before using it
	Poor battery contact	Take out the battery, put it back into the battery compartment and install it in place
	The plug of the external power supply is not plugged in	Unplug the power plug, reinsert it and push it into place
The battery power indication deviates greatly from the actual use	Battery drain	Replace the fully charged battery
	Battery life has expired	Replace with a new battery
The infrared image is not clear	No focus	Manual focusing makes the image clear
	The lens is covered with moisture or polluted	Clean the lens with professional equipment
The visible light image is not clear	The environment is too dark	Take appropriate lighting measures
	The visible light lens is covered with moisture or polluted	Clean the visible light lens with professional equipment
Inaccurate temperature measurement	No focus on the target	Focus manually to make the image clear, and then read the temperature
	The parameters related to temperature measurement are not set correctly	Change the parameter settings, or directly restore the default parameter values
	Measure temperature immediately after startup	In order to ensure the accuracy of temperature measurement, we recommend that you turn on the thermal imager and wait 5-10 minutes before starting the temperature measurement



NOTE: This equipment has been tested and found to comply with the limits for a Class A digital device, pursuant to part 15 of the FCC Rules. These limits are designed to provide reasonable protection against harmful interference when the equipment is operated in a commercial environment. This equipment generates, uses, and can radiate radio frequency energy and, if not installed and used in accordance with the instruction manual, may cause harmful interference to radio communications. Operation of this equipment in a residential area is likely to cause harmful interference in which case the user will be required to correct the interference at his own expense.

UNI-TREND TECHNOLOGY (CHINA) CO., LTD.

No.6, Gong Ye Bei 1st Road,
Songshan Lake National High-Tech Industrial
Development Zone, Dongguan City,
Guangdong Province, China

