

VOICE/DATA/VIDEO

VDV Commander™

Full-Featured Voice/Data/Video Cable Tester



KLEIN TOOLS 

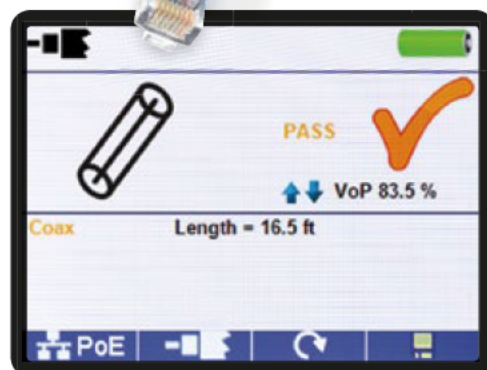
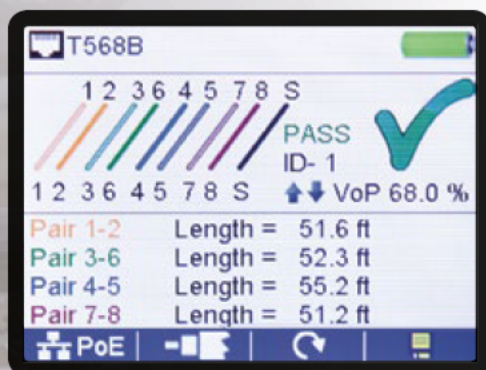
For Professionals... Since 1857®

V DV Commander™

Full-Featured Voice/Data/Video Cable Tester



V DV Commander™ Series locates, tests and measures coax, data and telephone cables to ensure fast and accurate voice/data/video installations. In addition, the Commander detects Power over Ethernet (PoE), has a full color screen and internal memory to store, download and output test results for easy report management.

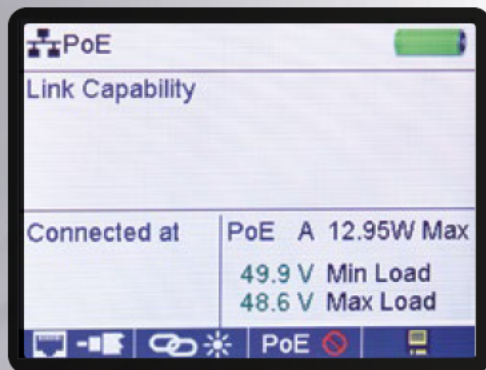


Test coaxial, data (RJ45) and telephone (RJ11) cables

- Wiremap per TIA-568A/B industry standard
- Identify wiring faults
 - Miswire
 - Open
 - Short
 - Split-pair
 - Reverse-pair
- Verify shielding
- Single-end cable testing or complete cable testing with Test-n-Map™ ID Remotes

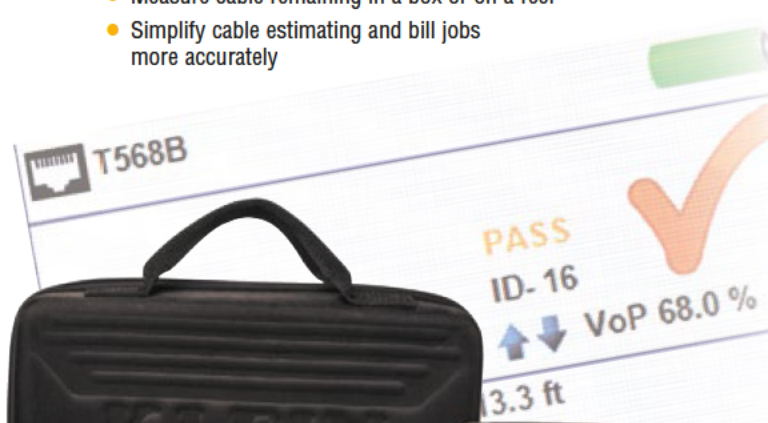
TDR Measure cable length and distance to a fault with Time Domain Reflectometry (TDR) technology

- Measure paired-conductor cables: voice, data, video, doorbell, siamese, lamp-wire and NM cables, up to 1,500 ft. (457 m)
- Accuracy up to $\pm(5\%$ and ± 1 ft./0.3 m)
- Identify the distance to a short to determine if a cable is damaged
- Identify cable runs outside specification to ensure compliance
- Measure cable remaining in a box or on a reel
- Simplify cable estimating and bill jobs more accurately



Detect, identify and test Power over Ethernet (PoE)

- Detect the presence of PoE
- Detect class and test loads up to 25.5 watts
- Test to ensure adequate power for PoE device
- Test IEEE802.3af and IEEE 802.3at (PoE Plus) compliant Power over Ethernet systems
- Identify modes A or B (Ethernet pairs with power)



VDV Commander™

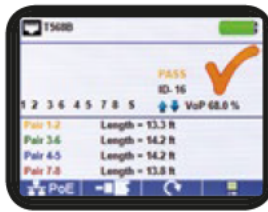


Fig. 1

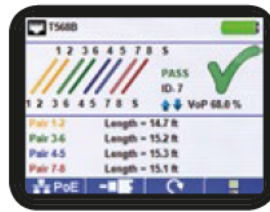


Fig. 2



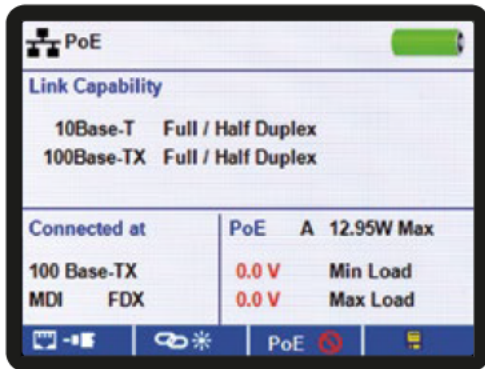
Fig. 3



Fig. 4

ID Locate and Identify Cables

- **Location ID Remotes** – up to 20 locations (Fig. 1)
 - RJ45 LanMap™ ID Remotes
 - F-Connector CoaxMap™ ID Remotes
- **Location Identification and Testing** – up to 8 locations (Fig. 2)
 - Test-n-Map™ ID Remotes
 - RJ45 and RJ12 ports
- **Link Light** (Fig. 3)
 - Identify a hub or switch with a blinking light
 - Visually locate cable runs by flashing system status/activity LED
- **Tone Generator*** (Fig. 4)
 - Trace cables, wire pairs and individual conductor wires
 - Indicates to a single cable/pair/pin
 - Includes four tones



Perform Active Network (Ethernet) Testing

- Detect active Ethernet current link speed, up to 1 Gbps
- Indicates advertised speeds 10/100/1000BASE-T half/full duplex



Reporting

- Save up to 256 cable or network tests
- Customize reporting with user defined names
- Export and print color reports

FEATURES		
	RJ-45 8-Wire Cables	●
	F-connector Coaxial Cables	●
	Telephone Cables	With Adapter
	Wiremap	●
	Open Fault	●
	Short Fault	●
	Miswire Fault	●
	Split-Pair Fault	●
Pass	TIA-568A/B & Crossover/Uplink	●
	Active Ethernet Detects link speed and capabilities to 1 Gbps	●
	Single-End Cable Testing	●
	Two-End Testing Test and identify location with remote	●
	Power Over Ethernet Testing	●
TDR	Time Domain Reflectometry Length Measurement Method	●
	Measures Cable Length	1,500 Ft. / 457 m
$\pm(5\% \text{ and } \pm 1 \text{ ft.})$ $\pm(5\% \text{ and } \pm .03 \text{ m})$	Accuracy / Measurement Resolution	●
	Link Light	●
ID	Cable Identification	up to 20
	Shield Detection	●
	Voltage Warning	●
	Low Battery Indicator	●
	Store Test Results	256
	Print Custom Reports	●
	Multiple-style Tone Generator* Down to Single Conductor/Pair/Cable	4
	Color LCD Display	2.7" (69 mm)
	Multiple Languages	ENG-ESP-FRA
Ft. / m	Imperial or Metric Results	●
Apo	Auto Power Off	●
	Customizable Setup	●
	USB interface (for PC connection)	MICRO
	Upgradeable Firmware (requires internet & pc connection)	●

* Functionality requires an analog tone tracing probe - VDV500-060 (Included in some kits).



VOICE/DATA/VIDEO

VDV Commander™



VDV Commander™ Test Kit

VDV501-828

- 1 VDV Commander™ Tester
- 1 Test-n-Map™ ID remote
- 5 LanMap™ RJ45 starter set location ID remotes
- 5 CoaxMap™ F-Connector starter set location ID remotes
- 1 test cable – Micro USB to USB A
- 1 test cable – universal RJ12 jumper (9")
- 1 test cable – RJ45 jumper (9")
- 1 coax adapter – Barrel (F-F, female)
- Batteries
- Carrying case

VDV Commander™ Test & Tone Kit

VDV501-829

- 1 VDV Commander™ Tester
- 1 PROBEplus Tone Tracing Probe
- 1 Test-n-Map™ ID remote
- 20 LanMap™ RJ45 location ID remotes
- 20 CoaxMap™ F-Connector location ID remotes
- 1 test cable – Micro USB to USB A
- 1 test cable – universal RJ12 jumper (9")
- 1 test cable – RJ45 jumper (9")
- 1 coax adapter – Barrel (F-F, female)
- Batteries
- Carrying case

Cat. No.	UPC# 0-92644	Batteries	Battery Life	Height	Width	Depth	Weight (with batteries)
VDV501-828	58211-0	6 AA alkaline batteries included	20 hours active 10 years standby	6.8" (173 mm)	3.6" (91 mm)	1.85" (47 mm)	12 oz. (340 grams)
VDV501-829	58212-7	6 AA alkaline batteries included Probe: 1 9V alkaline battery	20 hours active 10 years standby Probe: 25 hrs. active 4 yrs. standby	6.8" (173 mm)	3.6" (91 mm)	1.85" (47 mm)	12 oz. (340 grams)



Test Equipment Depot - 800.517.8431 - 99 Washington Street Melrose, MA 02176 - TestEquipmentDepot.com