

OPTA USER GUIDE



Download Full
User Guide Here

OPTA USER GUIDE

HEALTH & SAFETY

SAFETY

Before using your system for the first time, ensure that:

- Your system and accessories are operated, maintained and repaired by authorized and trained personnel only.
- All operators have read, understood and observe the user manual, in particular the safety regulations.



Unauthorised alterations to the instrument or non-compliant use shall invalidate all rights to any warranty claims.

ELECTRICAL SAFETY

- Disconnect your system from the electrical source before undertaking any maintenance.
- Avoid using any form of liquid near the system.
- Do not operate your system with wet hands.
- Only use with the power supply unit provided, in case of a lost or damaged power supply, the correct replacement must be obtained from Vision Engineering.
- Electrical input to head 5V, 3A
- Electrical input to Universal Stand - 9V, 3Amp.
- Electrical input from mains to power supply - 100 -240V ~50/60Hz, 1.0A Max.



ILLUMINATION

- Do not look directly into the illumination source. This may cause damage to eyesight.

ENVIRONMENTAL CONSIDERATIONS

- Avoid large temperature fluctuations, direct sunlight and vibrations.
- Ensure electrical components are at least 10cm from walls and combustible materials.
- Position the system on a firm, rigid and level table.
- The equipment should be positioned so that access to the electrical input connector is always available.
- Avoid positioning your system where bright reflections may affect the image.
- Indoor use only.
- Standard operating Temperature: +10°C to +35°C (50°F to 95°F)
- Storage Temperature: 0°C to +50°C (32°F to 122°F) or 3 months without any adverse effects.
- Maximum relative humidity 80% for temperatures up to +31°C (88°F) decreasing linearly to 50% relative humidity at 40°C (104°F).

COMPLIANCE STATEMENTS

Vision Engineering and its products conforms to the requirements of the EC Directives on Waste Electrical and Electronic Equipment (WEEE) and Restriction of Hazardous Substances (RoHS).



This product conforms to the UKCA and CE marks, demonstrating that it meets the requirements of the applicable directives.

INSTRUCTIONS



MOUNT OPTA HEAD TO A STAND

1. Loosen the upper retaining bolt in the universal arm.
2. Remove the lower retaining bolt.
3. Carefully place the locating hook of the Mantis viewing head over the upper retaining bolt of the universal arm.
4. Replace the lower retaining bolt, ensuring that the bolt passes through the lower locating mount of the Mantis viewing head.
5. Tighten the upper and lower retaining bolts then re-seat the universal arm rubber gaiter.
6. Ensuring the power adapter is suitable for your supply voltage, connect the power adapter plug to a suitable power outlet and its output connector to the base of the universal arm.
7. Connect the output lead at the top of the universal arm to the rear of the viewing head.

⚠ Do not attempt to connect the 9V Universal Stand power adapter directly to the viewing head.

FITTING LENSES

REMOVE PROTECTOR CAP ON BOTTOM OF UNIT (IF FITTED) AND RETAIN FOR FUTURE USE

To fit the lens

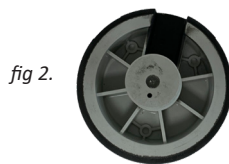
1. Locate 3 tabs of the objective lens into the slots on base of the unit and push upwards.
2. Rotate to the right to lock the lens in place.

To remove lens

1. Rotate to the left to unlock the lens.
2. Pull downwards to remove.

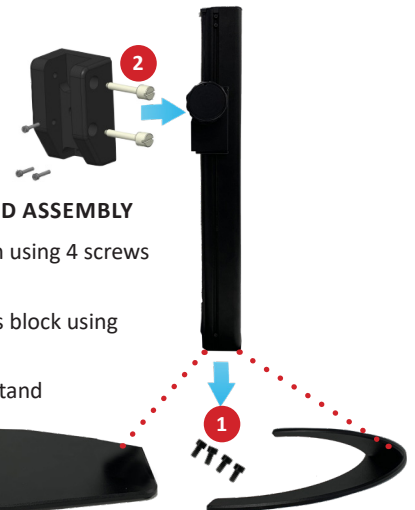


UNIVERSAL, TRACK AND CRESCENT STAND ASSEMBLY



UNIVERSAL STAND ASSEMBLY

1. Secure the universal mount to the work surface using the G-clamp provided (*fig.1*) or by using appropriate screws located in the holes of the mount (*fig 2*). Note: screws not included
2. Place the universal arm on top of the universal mount and lower it on to the spigot until it is fully mounted.



TRACK AND CRESCENT STAND ASSEMBLY

1. Screw base plate to column using 4 screws provided
2. Fit adaptor bracket to focus block using 3 screws provided
3. Mount the head onto the stand

WARRANTY

This product is warranted to be free from defects in material and workmanship for a period of two years from the date of invoice to the original purchaser.

If during the warranty period the product is found to be defective, it will be repaired or replaced at facilities of Vision Engineering or elsewhere, all at the option of Vision Engineering. However, Vision Engineering reserves the right to refund the purchase price if it is unable to provide replacement, and repair is not commercially practicable or cannot be timely made. Parts not of Vision Engineering manufacture carry only the warranty of their manufacturer. Expendable components such as fuses carry no warranty.

This warranty does not cover damage in transit, damage caused by misuse, neglect, or carelessness, or damage resulting from either improper servicing or modification by other than Vision Engineering approved service personnel. Further, this warranty does not cover any routine maintenance work on the product described in the user guide or any minor maintenance work which is reasonably expected to be performed by the purchaser.

No responsibility is assumed for unsatisfactory operating performance due to environmental conditions such as humidity, dust, corrosive chemicals, deposition of oil or other foreign matter, spillage, or other conditions beyond the control of Vision Engineering.

Except as stated herein, Vision Engineering makes no other warranties, express or implied by law, whether for resale, fitness for a particular purpose or otherwise. Further, Vision Engineering shall not under any circumstances be liable for incidental, consequential or other damages.

Vision Engineering Ltd. has been designing and manufacturing high quality ergonomic microscopes, digital instruments, inspection and non-contact measuring systems for over 60 years.

Vision Engineering has a network of offices and technical distributors around the world. For more information, please contact your Vision Engineering branch, local authorised distributor, or visit our website.



FM 557119

Vision Engineering Ltd.
has been certified for the
quality management
system ISO 9001:2015