

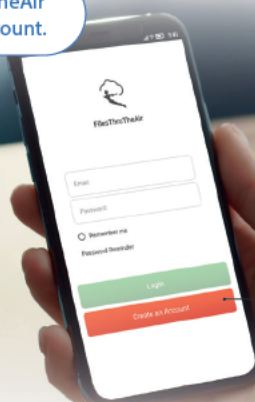


Wireless Alert **PRO**



Quick Start Guide

- 1 Download the FilesThruTheAir app and create a user account.



Create an Account

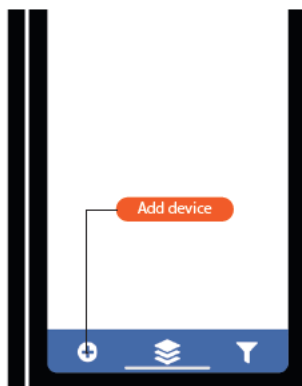
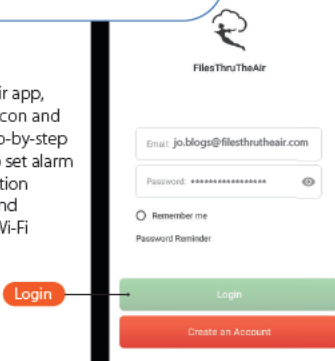


- 2 Connect to power via the USB cable provided and a USB power adapter (optional accessory PSU-5VDC-USB-INTL-WHT)

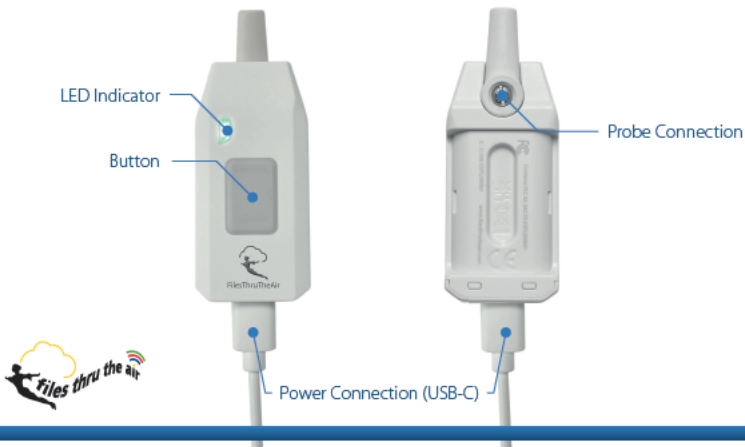


- 3 Configure and connect your Wireless Alert PRO

Login to the FilesThruTheAir app, select the **+** icon and follow the step-by-step instructions to set alarm levels, notification preferences, and connect to a Wi-Fi network.



Product Overview



LED Indication	Meaning
Green Flash Red Flash Green Flash (on Button Press)	Device is in Factory Default Mode
Green Flash Every Ten Seconds (or on Button Press) 10s	Device is Operating and Within Alert Limits
Red Flash Every Ten Seconds (or on Button Press) 10s	Device is Operating and in Alert
Amber Flash Every Ten Seconds (or on Button Press) 10s	Device has Identified a Fault/Warning or Loss of Connection
Blue Flash	Device is Communicating with Server
Green Flash Every Four Seconds 4s	Device is in Setup Mode
Long Green Flash	Setup was Successful
Long Red Flash	Setup Failed
Red Flash Green Flash Red Flash	Factory Reset Complete (after Ten-Second Button Hold)
Button Press	Function
Quick Press	Status Check (Refer to LED Indicator Table for Status Reference)
Three-Second Hold	Enter Setup Mode
Ten-Second Hold	Factory Reset

Installation

1
Install the bracket using the two screws provided



2
Clip the Wireless Alert into the bracket



3
Connect the Wireless Alert to a power supply



Safety Information

Refer to the FilesThruTheAir app for safety and legal information. Corintech Ltd. declares that this wireless device is in compliance with Directive 2014/53/EU. The complete EU Declaration of Conformity is available at www.files thru the air.com/support

Repairing or Modifying

Never attempt to repair or modify Corintech Ltd products. Dismantling them, other than for the purpose of changing replaceable batteries, may cause damage that is not covered under the warranty. Wireless Alert PRO products do not contain any replaceable batteries or user serviceable parts. Servicing should only be provided by an authorised supplier.



Disposal and Recycling Information

You must dispose of Corintech Ltd products in accordance with relevant laws and regulations. They contain electronic components and therefore must be disposed of separately from household waste.



Installation

Mount bracket/product a maximum of 2m above floor level.



Issue 2 11-03-2022