

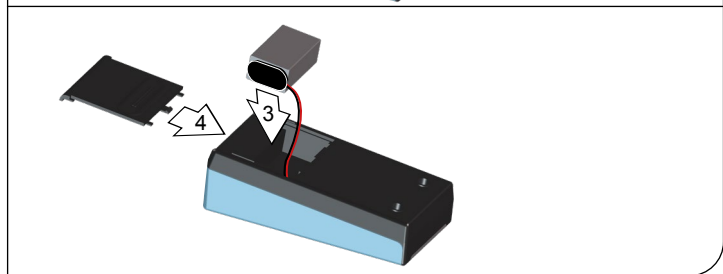
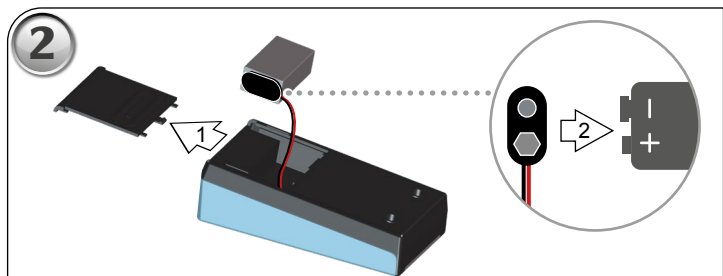
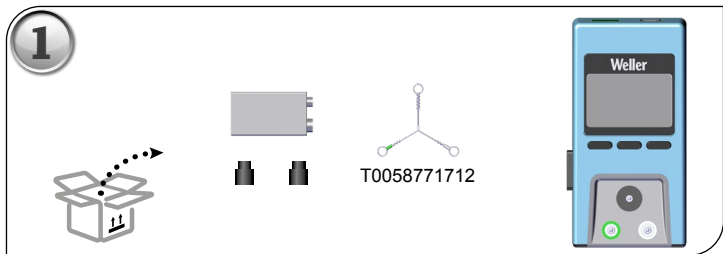
# Weller®

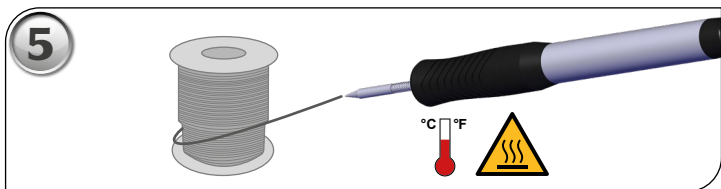
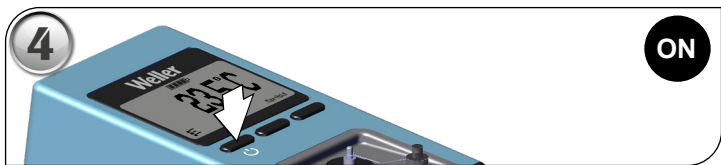
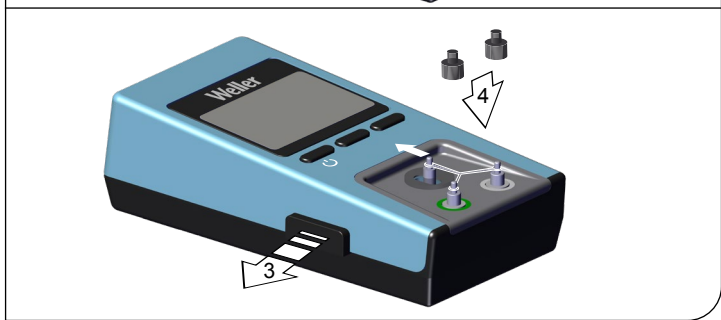
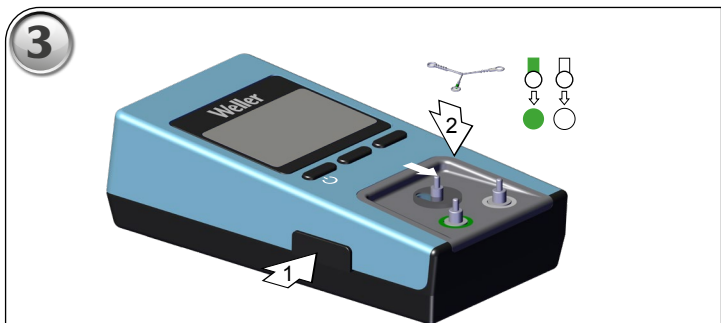
WXsmart

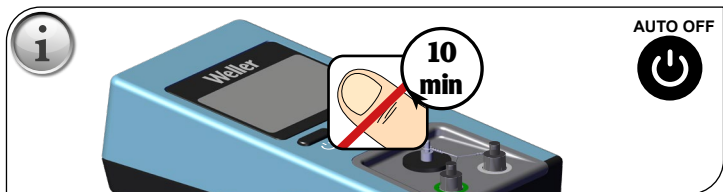
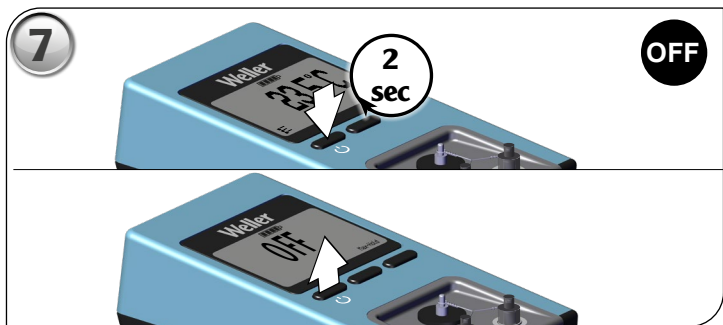
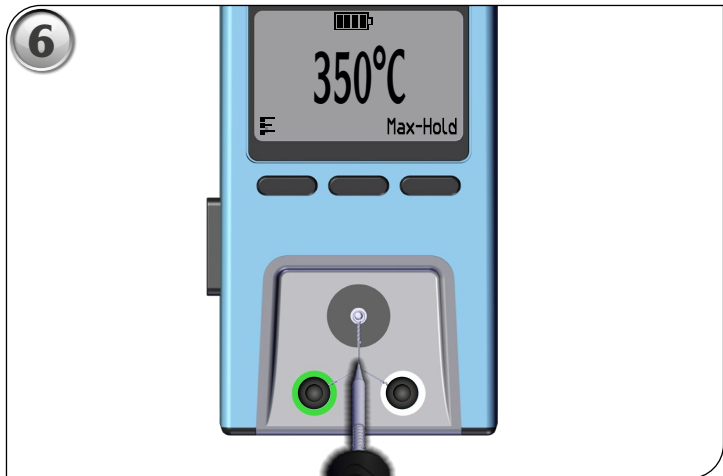


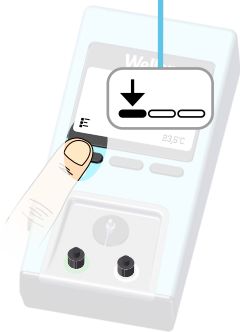
EN Translation of the original instructions

# WCU









0 - 999



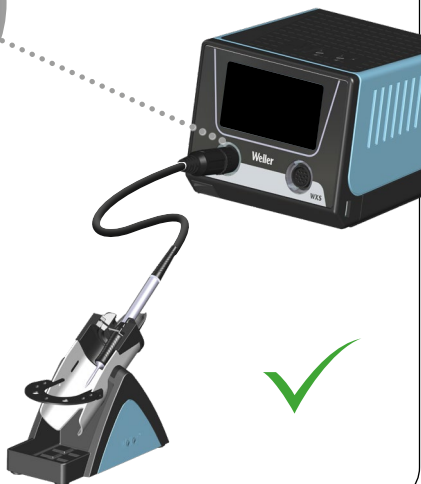
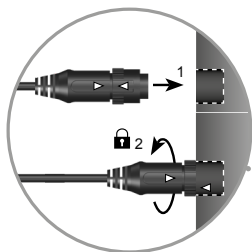
°C / °F



WX  
WXsmart



Auto-Cal





WX  
WXsmart



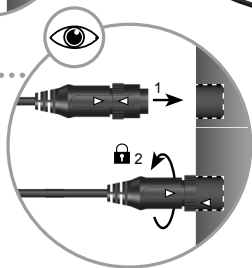
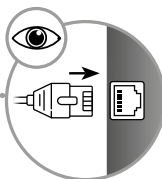
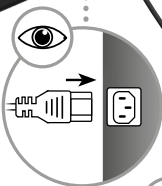
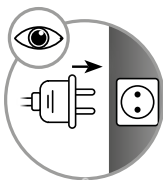
Auto-Cal



ch3

ch1









**Max. / Min. Offset**

**± 40°C**

**± 72°F**



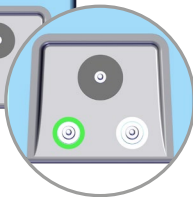
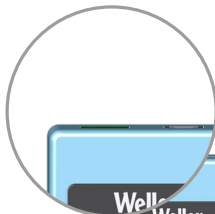
WX  
WXsmart



Auto-Cal



No TC

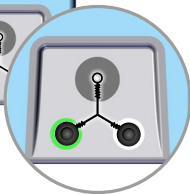
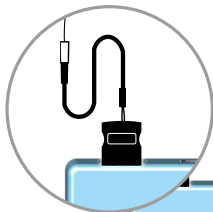




WX  
WXsmart



Auto-Cal

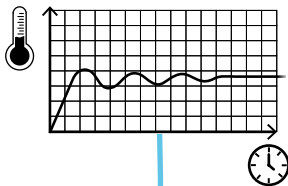
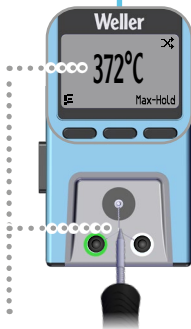


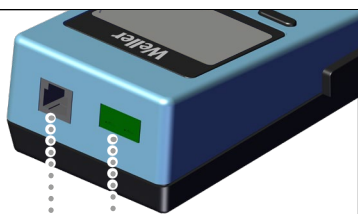


WX  
WXsmart

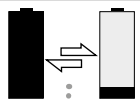


Auto-Cal

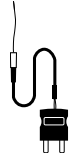




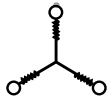
RS232  
Type K



Type K  
T0053119099  
Ø 0,5 mm



RS232  
T0058764710



## Technical Data

WCU	
Temperature measuring range Thermocross	0°C - 400°C 32°F - 752°F
Temperature measuring range Type-K Thermocouple	-150°C - +1200°C - 302 °F - +2192 °F
Applicable sensor	K (CA) type thermocouple
Measuring tolerance	±3 °C (between 300 and 600 °C) ±6 °F (between 572 and 1112 °F)
Energy supply	9 V Dry battery Alkaline cell recommended
Recommended battery	Ansmann XPower alkaline battery 9V E-block
Dimensions L x W x H	138 x 73 x 43 mm
Weight	120 g (Without battery)
Ambient temperature	0 °C - 40 °C,
Air humidity range	max. 80% Relative air humidity, without condensation
Ambient conditions	Applicable pollution degree 2 (According to IEC/UL61010-1)

## Safety information



**Read these instructions and the accompanying safety information carefully before starting up the device and starting work with the device.**

Failure to observe the safety regulations results in a risk to life and limb.

Keep these instructions in a place that is accessible to all users. Please adhere to the operating instructions of the connected devices.

Please be sure to read and follow the operating instructions for your Weller Supply Unit.

For safety reasons, children and youths under the age of 16, as well as persons who are not familiar with these operating instructions, may not use the device. Children should be supervised in order to ensure that they do not play with the tool.

This device is not intended for use by persons (including children) with limited physical, sensory or mental aptitude, or by persons who lack knowledge or experience in handling the device.

Always place the soldering tool in the safety rest while not in use.

**Keep other persons well away from your workplace.**

The work area is out of bounds for children and unauthorised persons. Never allow other persons to touch the soldering tool or cable.



**Use only original  
Weller soldering tips!**

**Warning** Electrical shock

**Protect yourself against electric shocks.** The handles on soldering tools with an antistatic design are conductive.

Avoid touching earthed objects such as pipes, heaters, cookers and refrigerators.

Do not use the soldering tool in a damp or wet environment.

Never work on voltage-carrying parts.

**Warning** Risk of burns

**The soldering tip becomes very hot during soldering work. There is a risk of burns from touching the tips. After the soldering process, the soldering tool and the workpiece holder are still hot.**

- Always place the soldering tool in the safety rest while not in use. Make sure the safety holder is stable.
- Do not touch the hot soldering tips and keep them away from inflammable objects.
- Only replace solder tips when cold
- Only replace nozzles when cold

**Risk of burning through liquid solder. Protect yourself against solder splashes.**

- Wear appropriate protective clothing to protect yourself against burns. Protect your eyes by wearing eye protection.

**Warning** Fire hazard

**Covering the soldering iron or the safety holder poses a fire hazard. Always keep objects well away from the soldering iron and safety holder.**

- Always keep objects well away from the soldering iron and safety holder.
- Keep all combustible objects, liquids or gases well away from the hot soldering tool.
- Do not place or leave the hot soldering or desoldering tip on the worktop or on plastic surfaces.
- Avoid unintentional operation. Disconnect the soldering tool from the power supply while not in use.
- Keep explosive and flammable objects well away from the device.

Apply the hot soldering tip to the measuring point in the centre of the sensor only. Touching the plastic casing, sensor connections or clamping bolts with the hot soldering tip can result in damage

Handle the sensor wire with care during insertion. Careless handling can cause the sensor wire to break.

This device may only be used at room temperature and indoors. Once switched on, the device must first display the room temperature before a reliable measurement can be taken.

The measured temperature can only be read out once the value in the display has stabilised. This process can take a few seconds.

When using the WXsmart in combination with the RTPS MS, RTMS MS and RTUS MS intelligent soldering tips, auto calibration with a soldering tip offset is possible. The two devices are connected with an RS232 cable.

When using the WX 1, WX 2, WXD 2, WXA 2 and WXR 3 soldering stations, auto calibration with a soldering iron offset is possible in combination with the following soldering irons: WP 65, WP 80, WP120, WP 200, WTP 90, WXP 65, WXP 80, WXP 90, WXP 120, WXP 200, WXMP, WXMP MS, WXPP, WXPP MS und WXUP MS. The two devices are connected with an RS232 cable.

**Do not use the cable for purposes other than those for which it is intended.** Never carry the unit by the cable. Do not use the cable to pull the plug out of the socket. Protect the cable against heat, oil and sharp edges.

**Be alert.** Pay attention to what you are doing. Be smart when using the unit. Do not use the soldering tool if you are having difficulty concentrating.

**The soldering tool must be operated only in perfect technical working order.** Safety devices must not be deactivated.

Faults and defects must be repaired immediately. Before using the unit / tool, safety devices must be carefully checked to make sure that they are functioning properly and in the manner intended. Check that moving parts are functioning properly and are not sticking, and whether parts are damaged. All parts must be correctly fitted and must satisfy all the requirements necessary to guarantee troublefree operation of the unit.

## Specified Conditions Of Use

Only use the calibration unit to measure and calibrate the soldering tip temperature under the conditions stated here.

**This device may only be used at room temperature and indoors. Protect against moisture and direct sunlight.**

## Care and maintenance

To guarantee the measuring accuracy, we recommend replacing the sensor after every 50 measurements. This value is a guideline only.

When wiping any sensor connections that have been contaminated with soldering flux, only use a soft cloth impregnated with alcohol. Do not use any thinning agents or petrol.

If the battery symbol displays „low“, replace the battery with a battery of the same type. The specifications can be found in the technical data. A low level of battery can result in inaccurate readings.

Remove the battery from the device if it is not to be used for a while.

## Disposal

Electrical appliances, batteries and rechargeable batteries must not be disposed of with household waste. They must be collected separately and taken to a recycling company for environmentally friendly disposal. Ask the local authorities or your specialist dealer about recycling centres and collection points.

## Warranty

Claims by the buyer for physical defects are time-barred after a period of one year from delivery to the buyer. This does not apply to claims by the buyer for indemnification in accordance with §§ 478, 479 BGB (German Federal Law Gazette).

We shall only be liable for claims arising from a warranty furnished by us if the quality or durability warranty has been furnished by use in writing and using the term „Warranty“.

The warranty shall be void if damage is due to improper use and if the device has been tampered with by unauthorised persons.

For more information please visit [www.weller-tools.com](http://www.weller-tools.com).

## Symbols



Caution!



Warning! Risk of burns



Read the operating instructions!



ESD-compatible design and ESD-compatible workstation



Type-K Thermocouple



Thermocross



CE mark of conformity



British Conformity Mark



### Disposal

Do not dispose of electric tools together with household waste material! In observance of European Directive 2012/19/EU on waste electrical and electronic equipment and its implementation in accordance with national law, electric tools that have reached the end of their life must be collected separately and returned to an environmentally compatible recycling facility.



### Disposal - UK

Do not dispose of electric tools together with household waste material! In observance of British Directive 2013 No. 3113 on waste electrical and electronic equipment and its implementation in accordance with national law, electric tools that have reached the end of their life must be collected separately and returned to an environmentally compatible recycling facility.



**We hereby declare that the products described herein comply with the following guidelines:**

---

SI 2008 No.1597, SI 2012 No.3032, SI 2016 No.1091

Besigheim, 2021-09-14



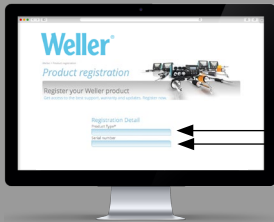
Philippe Buidin  
Managing director

Authorised to compile technical documentation.

Apex tool Group (UK Operations) Limited  
Piccadilly, Tamworth  
Staffordshire B78 2ER

## Product Registration

Produkt-Registrierung - Enregistrement produit - Registro de producto - 尊敬的客户您好



[www.weller-tools.com/registration](http://www.weller-tools.com/registration)

