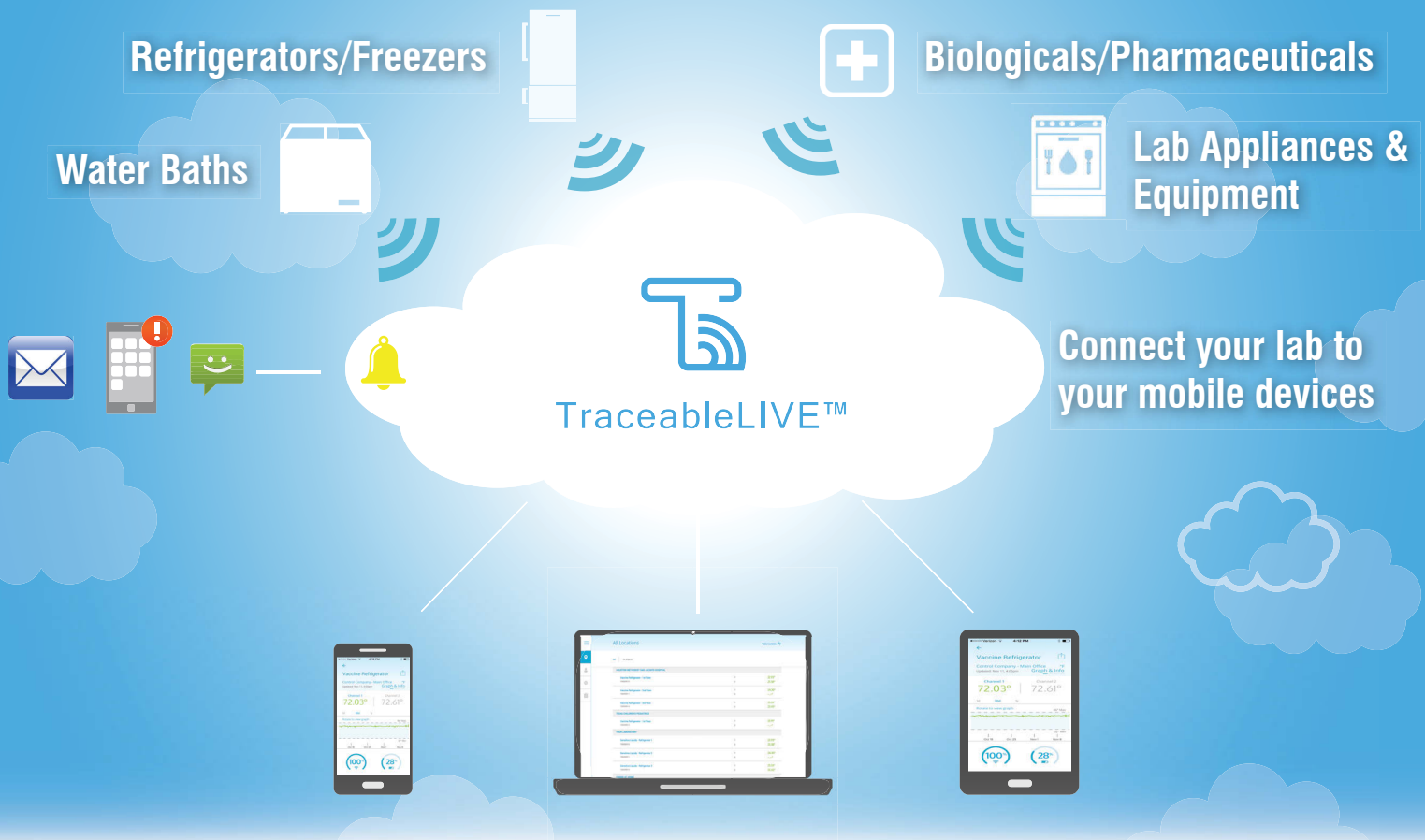


TRACEABLE LIVE™



**Stay Connected—
LIVE & Secure
remote
monitoring
wherever
you go!**



TraceableLIVE™ Wi-Fi Datalogging Refrigerator/ Freezer Thermometers with Remote Notification

The simple, efficient, and reliable way to stay connected to your critical environments

- Monitor locally or remotely temperature and more—connect to existing WiFi
- Alerts: temperature alarm, connectivity interruption, low battery
- Cloud-based applications—no local software required; web, Android, iOS data visibility
- Receive MOBILE PUSH / E-MAIL / TEXT notifications
- Continuous data transmission & monitoring using SSL encrypted SECURE connection
- 6510 and 6511 are ideal for monitoring ultra-low temperature freezers and include a FEP cable
- Unlimited scalability—use TraceableLIVE™ in individual labs or an entire network of facilities
- Multiple point temperature calibration—traceable to NIST
- Requires TraceableLIVE™ subscription



The TraceableLIVE™ service—Simple and SECURE setup



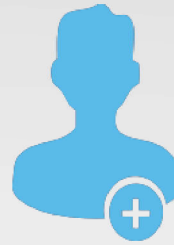
Purchase

Purchase a TraceableLIVE™ Product



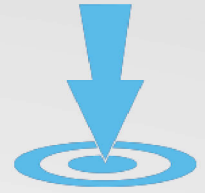
Connect

Connect your new device to your existing Wi-Fi



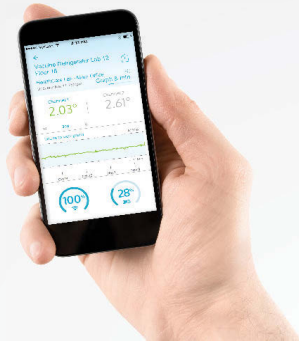
Create

Create an account on TraceableLIVE.com

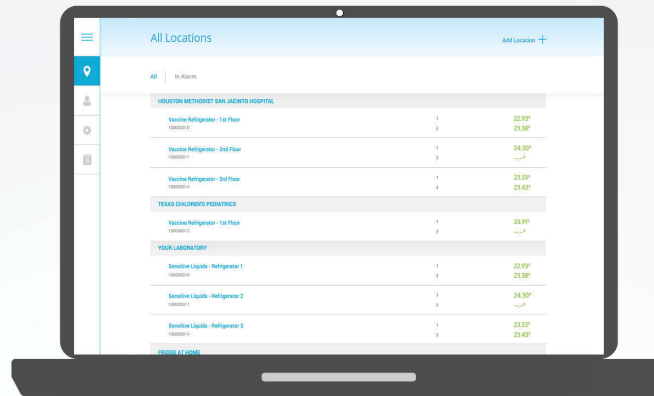


Point

Point device to your account to begin controlling device



IoT Connectivity
Protect your work



Once the setup is complete you can:

- Set alarm parameters on device remotely
- View current conditions in your lab anywhere
- Generate data reports in real time
- Assign user access for the whole team



Cloud-Based
Secure Data Link

Traceable® Certificate

Multi-point calibration on an individually-numbered Traceable® Certificate which assures accuracy from an ISO/IEC 17025:2005 (1750.01) calibration laboratory accredited by A2LA. It indicates traceability of measurements to the SI units through NIST or other recognized national measurement institutes (NMI) that are signatories to the CIPM Mutual Recognition Agreement.

Cat. No.	Range	Accuracy	Resolution	Probe
6500	-50.00 to 60.00°C (-58.00 to 140.00°F)	±0.25°C	0.01°	2 Bottles (patented)
6501		±0.25°C	0.01°	1 Bottle & 1 Bullet™
6502		±0.25°C	0.01°	2 Bullets™
6503		±0.25°C	0.01°	2 Stainless-steel
6510	-90.00 to 105.00°C (-130.00 to 221.00°F)	±0.1°C	0.01°	1 Platinum RTD sensor, Stainless-steel 316 probe
6511		±0.1°C	0.01°	2 Platinum RTD sensors, Stainless-steel 316 probes

TraceableLIVE™ Subscription Cost

# of devices	Monthly	Annually	TEXT (SMS) Add on
1-9 devices	\$8.99 per device	\$100 per device	+\$2 per device a month
10+ devices	\$7.20 per device	\$80 per device	+\$2 per device a month



Bottle Probe



Bullet™ Probe



Stainless-Steel Probe

