

# Weller®



EN Translation of the original instructions

## **WSR 200**

WTP 90,  
WP 120,  
WXP 120,  
WXMP,  
WXUP,  
WXUPS MS

## **WSR 201**

WSP 80,  
WXP 80,  
WP 80

## **WSR 202**

WSP 150,  
WP 200

## **WSR 203**

WMRT

## **WSR 204**

WXMT, WXMT MS

## **WSR 205**

WMRP

## **WSR 206**

DXV 80

## **WSR 207**

WXDP 120

## **WSR 208**

WXPP, WXMP MS

## **WSR 209**

WXHAP 200

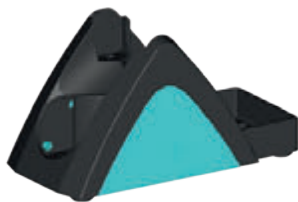
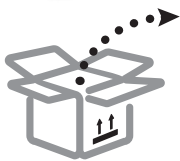
## **WSR 210**

WXMTS/  
WXUTS

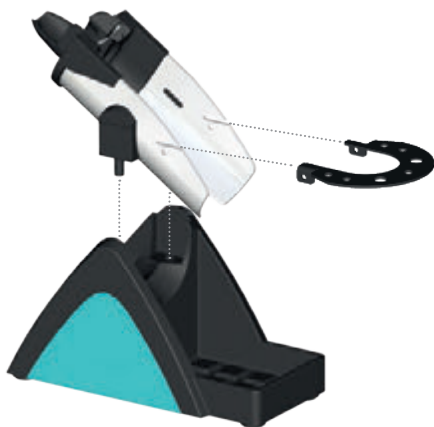
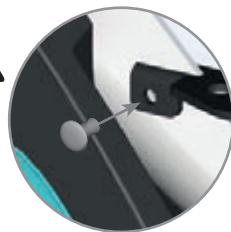
## **WSR 211**

WTMT

1



2



T0058768731



XT



T0058768733



LHT



XHT



XNT



XH



RTP, RTP MS,  
RTM, RTM MS,  
RTU, RTU MS,  
RTPS MS,  
RTMS MS,  
RTUS MS



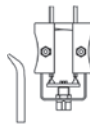
T0058768732



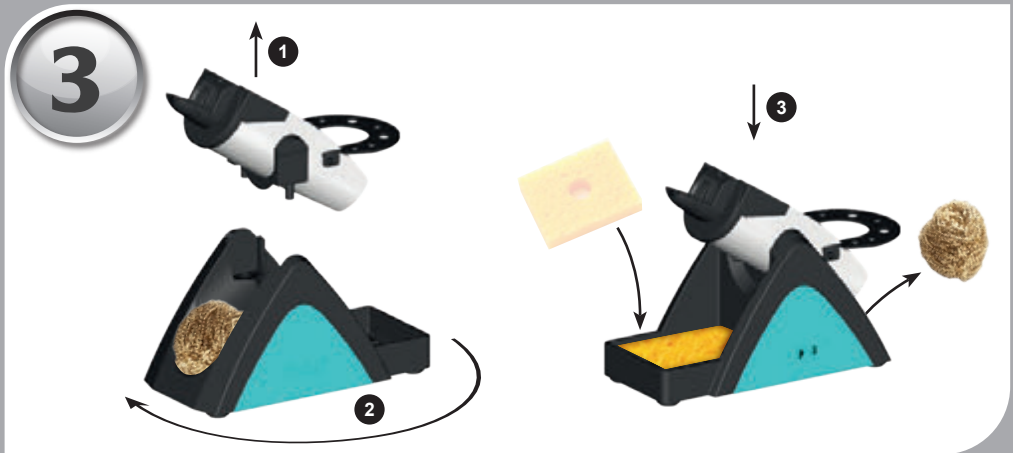
LT



T0058768770



RTW



# Product Registration

