

WÖHLER

Manual
HD-Cable Camera

US

Wöhler VIS 700



Best.- Nr. 24308 2024-01-12

The Measure of Technology

Contents

1	General Information.....	5
1.1	Operation Manual Information.....	5
1.2	Copyright.....	5
1.3	Notes.....	5
1.4	Proper use.....	6
1.5	Scope of delivery in the full equipment.....	6
1.6	Storage and transport.....	7
1.7	Manufacturer.....	7
2	Important information	8
3	Technical Data.....	10
3.1	Monitor	10
3.2	Wöhler pan & tilt camera head	11
3.3	Cable.....	13
3.4	Storage.....	13
3.5	Recording duration.....	13
4	Monitor.....	14
5	Connecting the camera cable and camera head	17
5.1	Connecting the camera cable.....	17
5.2	Connecting the camera head	17
6	Starting up	18
6.1	Activating the battery.....	18
6.2	Charging the rechargeable battery.....	18
7	Handling the monitor.....	20
8	Keys and their functions	21
8.1	On/Off key.....	21
8.2	Video key	22
8.3	Image key.....	23
8.4	Joystick	23
9	Display elements.....	24
10	Displayed position of the camera head	25

11	Home function.....	25
12	Live menu	25
12.1	Brightness menu.....	25
12.2	Focus menu.....	26
12.2.1	Adjusting the focus by Focus slider	27
12.2.2	Adjusting the focus per joystick.....	27
12.2.3	Adjusting the focus by fingertip.....	27
12.3	Comment function.....	27
12.4	System menu.....	30
12.4.1	Activate WLAN.....	30
12.4.2	Locator.....	30
12.4.3	Saving and deleting images and videos	31
12.4.4	Display images and videos	32
12.4.5	Settings.....	34
12.4.6	Info menu.....	36
13	Distance measurement	37
13.1	Accuracy “distance measurement”	37
13.2	Open and close the menu „distance measurement”.....	38
13.3	Set Measuring points	38
13.4	Saving the measurement results	39
13.5	Calibration of the camera head.....	40
13.6	Reset calibration	41
14	Working with the Light Ring.....	42
14.1	System requirements.....	42
14.2	Installing the light ring.....	43
14.3	Dimming the lighting	44
15	Transmission of image files via WLAN	45
15.1	Access Point: Transmission via a VIS 700-WLAN-network.....	46
15.1.1	Select WLAN channel.....	46
15.1.2	Change password and networkname	46
15.2	Client: Using an existing WLAN network	49

16	Faults	51
16.1	Reset.....	51
16.2	Possible malfunctions.....	51
17	Maintenance	52
17.1	Information on maintenance.....	52
17.2	Replacing the dome of the camera head.....	52
17.3	Camera head	52
17.4	Monitor	52
17.5	Cleaning the cable.....	52
18	Guaranty and Service	53
18.1	Guaranty	53
18.2	Service	53
19	Declaration of conformity	54

1 General Information

1.1 Operation Manual Information

This operation manual allows you to work safely with the Wohler VIS 700. Please keep this manual for your information.

The Wohler VIS 700 should be employed by professionals for its intended use only.

Liability is void for any damages caused by not following this manual.

1.2 Copyright

Without previous authorization of Wohler it is not allowed to reproduce, copy or translate this manual or part of this manual.

1.3 Notes



WARNING!

Not following this warning can cause injury or death.



CAUTION!

Highlights risks that can lead to damage occurring to the device.



NOTE!

Highlights tips and other useful information.

1.4 Proper use

The Camera is designed to visually inspect and document the condition of pipes and shafts, for example in flue gas systems, ventilation systems as well as for inspecting underground pipes etc.

The Camera is designed to be used by trained specialists only.

Any other use is considered improper use.

1.5 Scope of delivery in the full equipment

Device	Scope of supply
Wöhler VIS 700 HD-Pushrod Camera	Monitor
	Anti-glare protection
	Lithium-ion battery
	Riser system
	Ø 1.5 inch pan and tilt color camera head, pluggable
	Ø 1 inch miniature camera head, pluggable (option)
	Camera cable, 65 ft, with metrication
	3 replacement plastic domes
	1 USB power supply with USN-C-cable
	Plastic case

- 1.6 Storage and transport** To avoid damage occurring during transport it is imperative that the complete system is transported in the original case designed for the purpose.
- 1.7 Manufacturer** **Wöhler Technik GmbH**

2 Important information

Personal protection



WARNING!

Never point a connected camera head at your own or somebody else's eyes when the monitor is switched on. The LEDs are extremely bright and can dazzle.



WARNING!

In order to limit the exposure of persons to electromagnetic fields, a safety distance of 5 cm must be maintained when the locating transmitter is switched on and when the user is temporarily or permanently near the camera head.

Working environment



WARNING!

Only place the camera on firm level ground and ensure a secure position of camera and user, especially when working in high altitude, e.g. when working on the roof.



WARNING!

Make sure that the parts that you are going to inspect are no live parts.



CAUTION!

Protect the camera head against oil and acid. Never use the camera head and rod to push obstructions.

Operating Temperature



CAUTION!

Do not use the camera in temperatures above 40°C. High temperatures can damage the camera

Resistance to water



CAUTION!

Only the camera head and the rod are waterproof. Keep the camera system dry and protect it from water!

Resistance to impacts



CAUTION!

The camera system is not impact resistant. Do not throw or allow the case to fall!

Accessories



CAUTION!

Use only original Wöhler accessories and spare parts!

Strong magnetic or electric fields



NOTE!

Do not use the camera near television towers, mobile radio equipment or other sources of magnetic or electric fields, as these may impair the quality of the displayed image.

Extraneous influences



NOTE!

Extraneous influences such as static discharges can cause the device to malfunction. If a malfunction occurs, switch the monitor off and on again.

3 Technical Data

3.1 Monitor



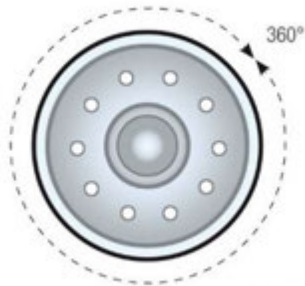
Fig. 1: Monitor

Description	Data
Dimensions housing	0.3 x 0.2 x 0.1 inch
Weight	1.9 lb
TFT display	7"/ 16:9 format 1280 x 800 pixel
Charging cable	USB-C 5 V/3 A
Power supply	3.7 V, 11400 mAh rechargeable Li-Ion battery
Battery operating time	Up to 4 h (battery status in display)
Operating Temperature	32 - 104 °F
Storage Temperature	- 4 – 122°F
WLAN function	Wireless LAN IEEE 802.11 b/g/n network standard 2412-2472 MHz, < 10dBm

3.2 Wöhler pan & tilt camera head

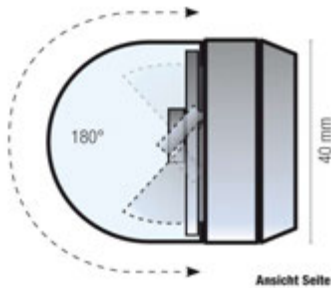


Fig. 2: Pan & tilt camera head



Ansicht Front

Fig. 3: Pans through 360°



Ansicht Seite

Fig. 4: Tilts 180°

Description	Data
Classification Type	½.7" COLOR CMOS
Focus distance	1 inch ... ∞
Light source	10 white LEDs
Protection	Waterproof to IP 67 (up to 1 m depth for 30 mins.)
Dimensions	
Diameter	Ø 1.5 inch
Shell length	2.2 inch
Total length	ca. 4 inch
Frequency of the integrated emitter	8.9 kHz
Angle of detection	70°

HD – Miniature Camera Head



Fig. 5: HD Miniature Camera Head

Description	Data
Classification Type	1/2,7" COLOR CMOS
Light source	10 white LEDs
Protection	Waterproof to IP 68 (up to 30 m depth for 30 mins.)
Dimensions	
Diameter	Ø 1 inch
Shell length	1.3 inch
Total length	ca. 3.2 inch
Frequency of the integrated emitter	8.9 kHz
Angle of detection	150°
Operation temperature	0 ... 40 °C
Storage temperature	- 20 ... 50 °C

3.3 Cable

Description	Data
Length	65 ft., 0,02 ft. Ø

3.4 Storage

Description	Data
Memory	Internal memory or USB stick with 32 GB max. (we recommend the Wöhler art. 11269)
Max. recording time of the internal memory	5 h
Resolution of savings	
Image, with text overlays (.png)	1280 x 800 Pixel
Image, without text overlays (.png):	1280 x 720 Pixel
Video (.AVI):	1280 x 720 Pixel

3.5 Recording duration

Description	Data
Max. Video recording duration (Video will be ended automatically)	29 minutes and 59 seconds (29:59 min)

4 Monitor



Fig. 6: Wöhler VIS 700 HD-Cable Camera



Fig. 7: Monitor



Fig. 8: Monitor bottom with connector strip

Legend:

- 1 Fixing holes for glare protection
- 2 Handle, in the picture inserted in the slot of the housing
- 3 Bottom side of the monitor with terminal strip
- 4 Loudspeaker
- 5 Microphone
- 6 CTIA standard connection for headset with headphone and microphone
- 8 USB port for stick
- 8 USB-C port for charging cable
- 9 Notch for placing the monitor on the connecting rail of the case



ATTENTION!

When inserting the USB stick, make sure that the labelling is facing downwards. Never insert the stick with force!

Fig. 9: Insert USB Stick correctly

5 Connecting the camera cable and camera head

5.1 Connecting the camera cable



Fig. 10: Camera cable connection

- Flip up the five-pole female connector located on the rear of the monitor.
- Insert the male connector of the camera cable or rod into the female connector, then turn the locking ring clockwise to secure the connection.



Fig. 11: Camera cable fed through guide

- Move the female connector with connected cable or rod to a suitable working position:
- Feed the cable through the guide, if you wish to put down the monitor.

5.2 Connecting the camera head



Fig. 12: Wöhler camera head Ø 40 mm connected to the camera cable

Insert the male cable connector into the five-pole female connector of the camera head, then turn the locking ring clockwise to secure the connection.

! CAUTION!

The connection is only waterproof when the connectors are joined together properly. Tighten the locking ring with your hand; never use pliers!

6 Starting up

6.1 Activating the battery

If the camera system cannot be switched on during initial operation, you have two options for activating the battery:

- Connect the monitor to the mains via the power supply unit. Switch on the camera system.

Afterwards, the camera can also be switched on without being connected to the power supply.

or

- Carry out a reset 1, see chapter 16.1

6.2 Charging the rechargeable battery



WARNING!

Danger of death by electrocution!

Never touch a mains plug with wet hands!

Do not expose the power pack to moisture!

Never pull the cable to remove the power pack from the socket outlet - it could rip out the cable!

Operate the power pack only when the mains power supply is the same as the voltage stated on the rating plate!



Fig. 13: Battery charge icon 60%



Fig. 14: USB port indicated by an arrow

A battery charge icon is on the right of the icon ribbon. The charge level is displayed in either blue or orange ($\leq 20\%$).

Recharge the rechargeable battery if the charge level is displayed in red ($\leq 10\%$).

- To charge the battery, connect the monitor to the mains using the USB power pack included in the scope of supply.
- To do so, insert the USB C connector into the USB port on the bottom of the monitor.

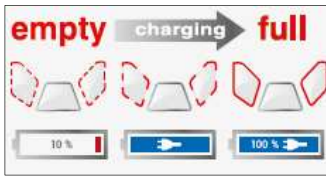


Fig. 15: Keys and charge level indicated when charging

When the camera system is switched off the image and video keys flash red during the charging process.

The image and video keys light up red when the battery is fully charged.

The camera system remains fully functional during the battery charging process.



NOTE!

If possible, recharge the battery when the camera system is switched off. This increases the operational lifetime of the rechargeable battery.

The keys will not flash if the battery is recharged with the camera system switched on. A connector symbol is displayed in the rechargeable battery display.

7 Handling the monitor



NOTE!

The monitor image can rotate so that the joystick on the monitor can be operated with the left or right hand, depending on the situation or personal preference.

Handle



Fig. 16: With the handle pulled out it is possible to hold and operate the monitor with one hand.



Fig. 17: Push button for pulling out the handle marked with arrow

Glare Protection

It is possible to pull out a handle to allow you to hold the monitor in your right hand and operate the joystick with your right hand at the same time.

- To pull out the handle press the black pushbutton on the top of the monitor and slide the handle to the right at the same time.
- Remove the Glare Protection from of the case lid. It is located in the compartment behind the lower part of the Short Guide.
- Insert both pins of the Glare Protection into the corresponding fixing holes immediately above or below the display to suit your working position. Magnets at the ends of the pins ensure a stable hold.

8 Keys and their functions

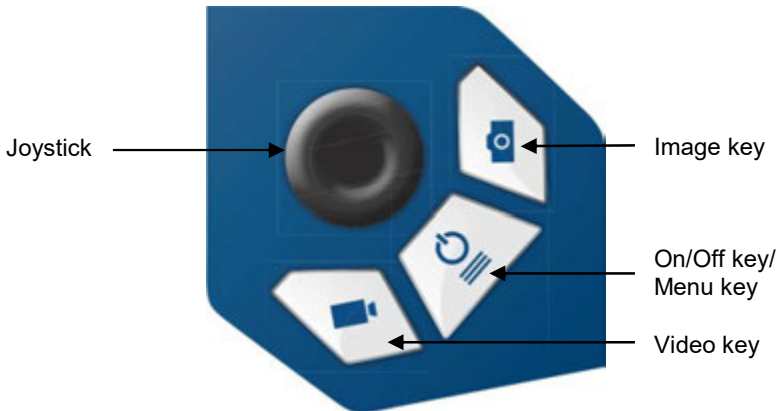


Fig. 18: Monitor keys

8.1 On/Off key



NOTE!

The ventilation fan works at irregular intervals when the camera is in operation.

Switching on the system

- When the system is switched off, press and hold the ON/Off key for approx. one second. The ON/Off key then lights up green, the image and video keys light up blue.

After approx. five seconds the LEDs light up on the camera. The Home screen is displayed followed by the camera image.



NOTE!

It is possible to turn the monitor through 180°. The icon and information ribbons in the monitor are automatically aligned according to the monitor position. It is also possible to turn the viewing position of the screen by slightly turning the monitor.

Switching the system off

- Press and hold the On/Off key for approx. two seconds until the system switches off.

Calling up the menu

- When the system is switched on briefly press the ON/Off key to display the menu.
- Briefly press the ON/Off key again to hide the menu.

8.2 Video key

- To begin recording a video, briefly press the video key.
- To stop recording the video, briefly press the video key again.

A red dot is displayed in the information ribbon of the display when a video is being recorded. In addition, the video recording time is also displayed in the information ribbon.



NOTE!

If no USB stick is inserted, the video is saved in the internal memory of the camera.

If a USB stick is inserted, the video is saved on the USB stick.

In any case, use a short USB stick, as a long USB stick could break off in the case. We recommend the Wöhler article 11269.



NOTE!

It is not possible to save the position indicator or a comment when recording a video.

If you require this information, it is recommended that you capture an image while recording the video. In the photo all information is shown as graphical elements.

Record time



NOTE!

After 30 minutes the camera will automatically stop recording a video. If the video has to be recorded over a longer period of time, the user has to start recording again by pressing the video key after 30 minutes.



NOTE!

The minimum record time is 10 seconds. Even if the user tries to stop the record before, the camera

will stop recording after 10 s only.

8.3 Image key

Press the image key briefly to capture an image.

It is possible to capture an image while recording a video.



NOTE!

The photo contains all the information that is shown in the camera display (comments etc.). In the settings menu you can set the photo to be saved without this information, see chapter 12.4.5



NOTE!

If no USB stick is inserted, the video is saved in the internal memory of the camera.

If a USB stick is inserted, the video is saved on the USB stick.

In any case, use a short USB stick, as a long USB stick could break off in the case. We recommend the Wöhler article 11269.

8.4 Joystick

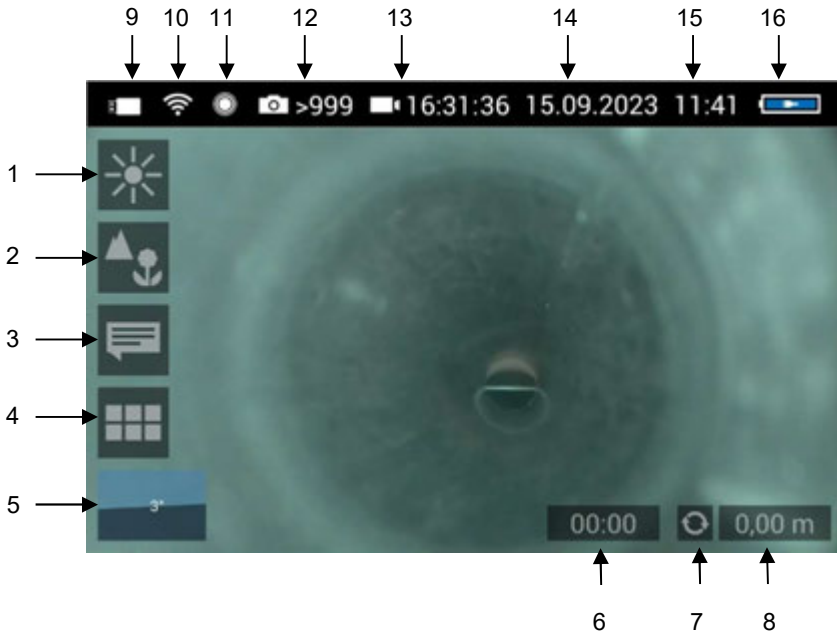
Tilts through 180°

- To tilt the camera head move the joystick back and forth.

Pans through 360°

- To pan the camera head move the joystick left or right.

9 Display elements



Legend:

- 1 Brightness control
- 2 Focus control
- 3 Comment function
- 4 System menu
- 5 "Horizon" with tilt and pan angle display / Home function
- 6 Video recording time
- 7 Reset meter counter
- 8 Meter counter
- 9 USB stick inserted (icon disappears as soon as USB stick is removed)
- 10 WLAN active
- 11 Locator
- 12 Number of possible images remaining
- 13 Remaining video recording time
- 14 Date
- 15 Time
- 16 Remaining battery charge

10 Displayed position of the camera head

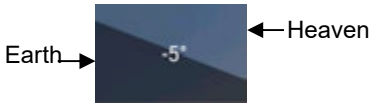


Fig. 19: Horizon icon including degree display

11 Home function

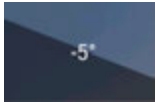


Fig. 20: Tap the horizon icon to level the camera head

12 Live menu



12.1 Brightness menu



Fig. 21: Brightness menu icon



Fig. 22: Brightness slider

The horizon icon indicates the downward gradient of the pipe.

Example:

- 5° corresponds to a downward gradient of 5°

(+ 5° corresponds to an upward gradient of 5°)

The Home function makes it possible to align the camera head in a straight position, so that the camera faces “straight ahead” and the tilt and pan angle display is depicted parallel to the ground below.

- To activate the Home function tap the horizon symbol in the display.

Via the live menu, settings can be made on the camera system.

- To display the live menu, briefly tap the On/Off/Menu key when the system is switched on.
- To hide the menu, briefly tap the On/Off/Menu key again.

All menu settings are made using the touchscreen. As soon as a slider appears in the display it is possible to configure the settings via the touchscreen or using the joystick. That is the case with the Focus menu and the Brightness menu.

In the Brightness menu it is possible to regulate the light intensity of the camera head LEDs.

- Tap the menu icon “Brightness”.
 - To increase or decrease the brightness
 - slide the dot on the slider using the joystick in desired direction
 - or
 - tap the sun symbol on the corresponding side next to the slider or slide the dot on the slider in the desired direction.

- To exit the Brightness menu press the joystick or tap another menu in the display.

12.2 Focus menu



Fig. 23: Focus menu icon

NOTE!

The focus function of the Wöhler VIS 700 HD camera is only active when the HD pan and tilt camera head Ø 40 mm is connected, not when the HD miniature camera head Ø 26 mm is connected. The miniature camera head has a fixed focus.

In the focus menu, you can set the sharpness of the image area you are interested in. You can adjust the focus using the touch screen or the joystick.

12.2.1 Adjusting the focus by Focus slider

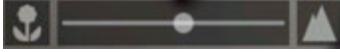


Fig. 24: Focus slider

12.2.2 Adjusting the focus per joystick

12.2.3 Adjusting the focus by fingertip



Fig. 25: Focus adjustment , distance is displayed

- Tap the menu icon “Focus” in the display to call up the slider.

- To adjust the focus slide the dot on the slider or tap the flower or mountain icon.
- To activate the focus function, briefly press the joystick.
- Move the joystick left or right to adjust the focus setting.
- Briefly tap the image area that you want to focus on on the screen.

The camera will now automatically focus on this area. As additional information, the distance between the camera and the selected image area is displayed for a short time. So the distance between a damaged area and the camera can be determined and documented.

12.3 Comment function

Using the comment function it is possible to add a written comment to an image or video. Images can then be saved together with the comments.



Note!

A comment can also be activated and deactivated in real time during the video.

It is not possible to add a comment to an image after it has been saved.

- Tap the menu icon “Comment” in the display. The comment list appears with ready-made comments.

Add a comment



Fig. 26: Comment menu icon

Add a comment to the list of comments

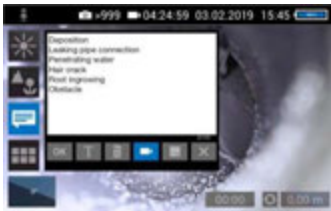


Fig. 27. List of comments

- To create a new comment tap the text icon **T**.
- Enter the new comment using the keypad.
- Tap **OK** to add the new comment to the list of comments. The new comment is displayed when the list of comments is called up again.

Edit a comment

- Tap on the comment you want to change so that it is highlighted in blue.
- Tap **T** to edit the selected comment using the keypad.



NOTE!

To cancel the selection again, tap on **X**.

Add a comment to an image



- To add a comment to the image, simply select the comment in the list and tap OK.

Add a comment to a picture or a video

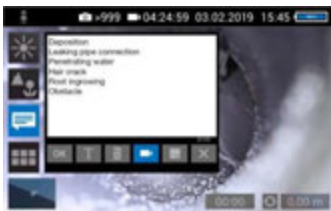


Fig. 28: Video button activated

- To add a comment to the image or video, tap on the comment in the list to select it and then tap OK.



NOTE!

Up to 10 comment lines can be selected to be stored in the image or video.

The selected comment lines now appear in the upper right corner of the image.

- If the Video button is activated, the selected comments can be saved together with a video.
- If the Video button is not activated, the selected comments can be saved with an image.

Delete a comment from the list of comments

- To delete a comment from the list of comments, select the comment in the list of comments and then tap the Recycle Bin icon. The



comment is no longer displayed when the comment function is called up again.

- To delete a comment previously added to an image, tap the comment to be deleted and then tap the Recycle Bin symbol in the Comment menu.

Store the list of comments



- Tap the save icon if you want to save the current comment list permanently.

The save icon will be colored blue for 2 seconds.

- If you exit the Comment menu without saving your new comment, the new comment will no longer appear in the list.

Delete a comment from the image

- Select the comment in the image (not in the comments list), and then tap the Recycle Bin icon to delete the comment from the image.

Exit the Comment menu



- Tap the **X** icon to exit the Comment menu.

12.4 System menu

You can access the System menu via the following submenus:

WLAN, Location detection, Image and video gallery, Settings.

The active functions are highlighted blue, inactive functions are grey.



Fig. 29: System menu with submenus WLAN (1), Locator detection (2), Image and video gallery (3) and settings (4)

12.4.1 Activate WLAN

This function is described in chapter 0.



Fig. 30: WLAN icon

12.4.2 Locator



Fig. 31: Locator icon

- Tap the Locator icon to activate the locator transmitter.

It is now possible to detect the camera head with the Wöhler Locator 200.



Fig. 32: Selecting the frequency

The transmission frequency of the connected camera head is displayed below the locator icon.

- It is possible to change between 9.2 kHz, 8,9 kHz and 512 Hz .
- After selecting the transmission frequency, activate the locating transmitter to save the new selection.

When the camera is rebooted, the last selected transmit frequency is retained.

•

NOTE!

The camera consumes less power when the transmitter is switched off. However, in this case it will not be possible to locate the camera head.

12.4.3 Saving and deleting images and videos



Fig. 33: Image and video gallery icon



Fig. 34: Image and video gallery

- Photos and videos are automatically saved in the internal memory if no USB stick is inserted.
- If a USB stick is inserted, photos and videos are automatically saved to it.

The Picture and Video Gallery displays all the pictures and videos you have taken. The respective file name consists of the date and time of the recording.

Mark all files



Fig. 35: Lists icon

Save files from internal memory to USB stick

- Tap the Lists icon to highlight or deselect all files.

- Insert the USB stick into the monitor. It is important that you do so **before opening the image and video gallery.**

NOTE!

In any case, use a short USB stick, as a long USB stick could break off in the case. We recommend



Fig. 36: Image gallery with highlighted files; the Save icon is indicated by an arrow.



Fig. 37: Memory Icon

Delete files



Fig. 38: Recycle Bin icon

12.4.4 Display images and videos



Fig. 39: Preview selected video

How to playback videos on a

the Wöhler article 11269.

- In the internal memory select the check boxes next to the files to be saved.

NOTE!

A grey USB icon indicates that the internal memory is selected. A blue USB icon indicates that the USB stick is selected.

- To do so tap on the next check box next to the selected file. The check boxes will then be highlighted blue.
- Then tap on the memory icon in the footer.
- The memory icon is colored blue and the images are now copied to the USB stick. This can take some seconds.

NOTE!

Never remove the USB stick immediately after deleting or copying files to it. In this case, there is a risk of data loss.

Always leave the gallery before removing the stick.

- Select the check boxes next to the files to be deleted. The check box next to a selected file is highlighted blue.
- Then tap the Recycle Bin icon.
- Tap a file name in the Image and Video Gallery.

An image or video preview is displayed next to the file list.

- Tap Preview. The image or video is displayed.

NOTE!

Depending on the size of the video file it can take several seconds for the video to load before it is ready to play.

To return to the gallery, tap the image icon again or tap the Close icon in the video.

NOTE!

PC

During video playback, the date, time and meter count are always displayed in the video, regardless of which media player is used.

You can playback a video on the PC using the Windows Media Player or VLC Player once you have saved the respective video file to the PC. If you work with a Windows PC, the Media Player will already be installed on the PC. The VLC Player is available to download free of charge from the website.

**NOTE!**

Depending on the size of the video file it can take several seconds for the video to load before it is ready to play.

Exit the Image and Video Gallery

Tap the **X** icon to exit the Image and Video Gallery.

12.4.5 Settings



Note!

The settings made here are automatically saved and remain stored after the camera system has been switched off and switched on again.

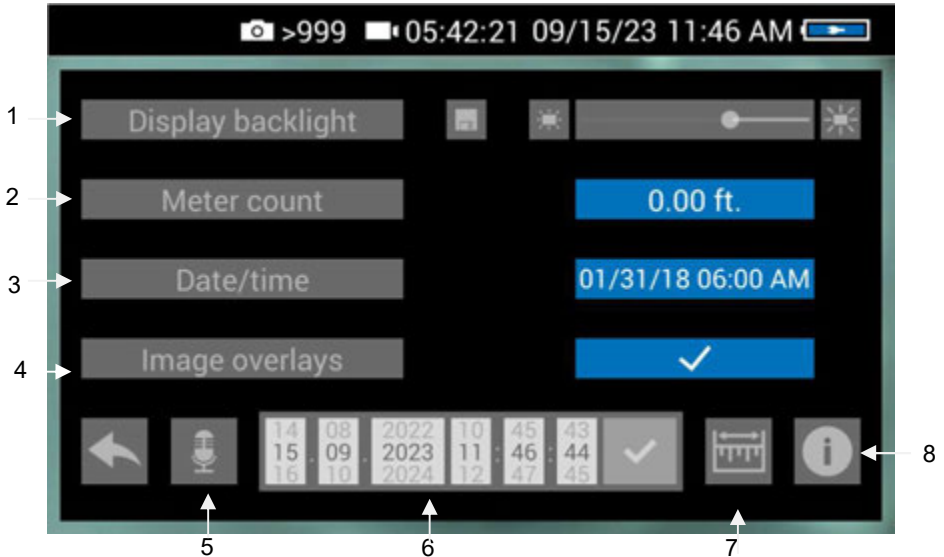


Fig. 40: Settings menu

1 Display Backlight



Here the display backlight can be adjusted. (To adjust the illumination of the camera head, see chapter **Fehler! Verweisquelle konnte nicht gefunden werden.**)

When the camera is turned on, the display brightness is always set to 70%.

- To change the display brightness, tap on the light icons next to the slide bar

or

- move the point on the slide bar.

It is possible to adjust the display brightness in 10 levels from 10% to 100%.

If you want to retain the setting of the display brightness even after switching on again, tap the memory icon next to the slid bar.

**NOTE!**

To reduce power consumption when the battery is low, it is advisable to choose a low backlight.

2 Meter Count

There are 2 possibilities to display the meter count:

0.00 m (Meter)

0.0 ft. (feet)

- Tap on the blue unit field to change the unit.

3 Date/Time

Here you can change the display of date and time. The following possibilities exist:

GERMAN:

Day.Month.Year

00.00 – 24.00

INTERNATIONAL:

Year-Month-Day

00:00 – 12:00 AM and 00:00 – 12:00 PM

USA:

Month/Day/Year

00:00 – 12:00 AM and 00:00 – 12:00 PM

4 Save fotos without display information

The photos taken with the Wöhler VIS 700 contain all the information shown in the camera display (status display, comments, meter count etc.)

- To deactivate the displays, tap on the check mark .

An x appears instead of the check mark. Photos are now saved without this information.

The settings are saved automatically and are retained after switching the camera off and switching on again.

5 Voice recording

The Wöhler VIS 700 can record a voice recording for each video. The microphone must be activated before recording.

- Tap the microphone icon to activate the microphone.
- The microphone is located at the bottom left of the monitor, see Fig. 7, part 5.
- Tap the microphone icon again to deactivate the microphone if you do not want the sound to be recorded during video recording.

6 Updating the date and the time

Here you can change the date and time. They appear in the header of the display and as file names of stored photos and videos.

- Select the correct number and confirm with the hook.

The settings are saved automatically and are retained after switching the camera off and switching on again.

7 Distance measurement

See chapter 13.

8 Info Button

- Tap on the Info Button to enter the info menu.

12.4.6 Info menu



Fig. 41: Info menu

Service button

In the info menu under "Hostname" you will find the serial number which is required for displaying the images in a browser, see chapter 0 (transmission of the image files via WLAN), the language version, the wlanO-IP as well as software and hardware versions for the service.

The user does not have to operated the service button.

13 Distance measurement

The Wöhler VIS 700 can measure the distance between two points in the field of view of the camera head. This provides the user with information about the diameter, distance and size of the inspected objects.



NOTE!

The distance measurement can only be carried out if the camera head Ø 40 mm is connected.



NOTE!

For a precise measurement result, use a plastic dome on the camera head when measuring distance.



NOTE!

For an exact measurement result ensure that the camera dome is clean.
 The most precise results for distance measurement are obtained in the centre of the image.
 For an accurate measurement, move the camera head as close as possible to the object to be measured, see Measuring accuracy.

13.1 Accuracy “distance measurement”

Distance lens /measured object	Precision
0 – 10 cm	± 1 cm
10 – 30 cm	± 2 cm
> 30 cm	inaccurate

13.2 Open and close the menu „distance measurement“



Fig. 42: Icon: „distance measurement“

13.3 Set Measuring points

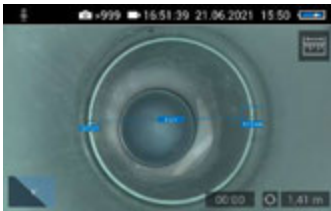


Fig. 43: Distance between 2 measuring points

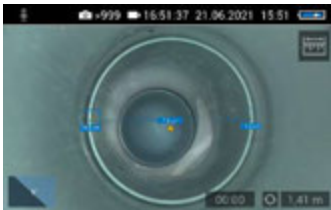


Fig. 44: Warning triangle under distance indicator

To measure an object or distance, proceed as follows:

- Tap the display **for 1s**

The "Distance measurement" icon appears at the top right of the display.

- To exit the "Distance measurement" menu, briefly tap on the icon.

- When the "Distance measurement" icon is displayed, tap the starting point of the distance to be measured.
- As soon as the camera has focused on the point and the distance to the camera lens is displayed, tap on the end point of the distance to be measured.

The distance between the two points is then displayed.



NOTE!

A warning triangle under the measured distance means that the camera head has not been recalibrated after the last reset of the calibration value. In this case, first calibrate the camera head, cf. chapter 13.6.



Fig. 45: The measuring points can be moved by dragging them

 **NOTE!**

The start and end points of the measurement can be moved at any time by dragging and dropping in the screen. The camera then recalculates the points.

- If the displayed distance is not plausible, you can move the start and end points again. To do this, simply tap the end point again.

 **NOTE!**

Only 2 points can be marked at the same time.

13.4 Saving the measurement results



Fig. 46: Settings menu, menu point „Image overlays“ is activated

- Save your measured distance by taking a photo of it.
- Make sure that the menu item "Image overlays" is activated in the settings menu.

13.5 Calibration of the camera head

Since the different camera heads as well as the glass and plastic domes have different optical properties, for an optical distance measurement it is necessary to calibrate the camera head after a change. The camera stores this calibration until the user resets or overwrites it.

For calibration, measure a reference value as accurately as possible. A distance of about 10 cm from the camera lens to the object is suitable for the calibration measurement. The object should be visible in the centre of the camera display. The measuring points should not be on the edge of the display.



Fig. 47: Calibration with calibration template



NOTE!

Calibration is easy to perform using the calibration template. This template is in the internal memory of the camera. As soon as a USB stick is inserted into the monitor, the calibration template is automatically copied to the USB stick.

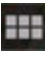


- Print out the template on a white paper.
- Bend the paper upwards by 90° at the fold.
- Place the camera head on the marked spot and align the black calibration bar in the center of the picture.
-
- Calibrate the camera head as follows:
- Tap the icons “System menu”  > “Settings menu”  > Distance measurement 



Fig. 48: Icon „distance measurement“ in the settings menu

The calibration procedure is now shown in the display.

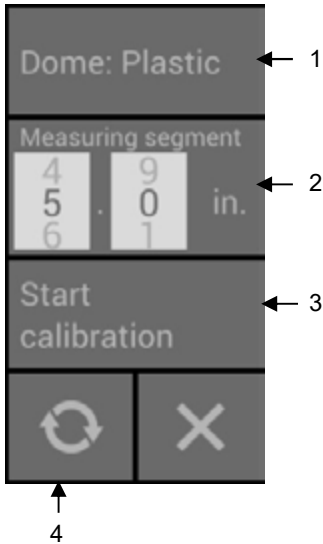


Fig. 49: Calibration Menu



Fig. 50: Set the start and end point of the measuring segment.

The calibration menu for the camera head opens in the display.

- Select the material of the dome (plastic or glass) (1).
- If you do not want to work with the calibration template but with a reference object, set the measuring segment (2).

(Measuring distance: defined distance that is measured as a reference value during calibration).



NOTE!

The reference object can be an object that you always have with you, for example a rule, a USB stick, etc.

When using the calibration template, the pre-set measuring segment can remain 5 cm.

- Tap on „Start calibration“ (3).
- Touch the start and end points of the measuring distance in the screen and correct the position of the point by drag & drop if necessary.

- Tap on "Start calibration" when the end points are positioned (3).

After calibration, the normal video image reappears on screen.

13.6 Reset calibration

- Tap the reset icon (4) to reset the calibration to the default value.

14 Working with the Light Ring



Fig. 51: Digital Light Ring for camera heads Ø 26 mm and 40 mm

14.1 System requirements

The additional lighting can be controlled via the camera.



NOTE!

It is not possible to control the Light Ring with an older vVersion of the camera or the camera head.



Fig. 52: Info menu with SOM (Firmware of the camera) and CAM (Version of the camera head)

The firmware of the camera must be 2.0.2 or higher. The version of the camera head must be 1.4.0 or higher. You can find the version number in the Info menu, see chapter 12.4.6.

If you work with an older camera or camera head the the light ring will always be switched on when the camera ist switched on

14.2 Installing the light ring



Fig. 53: Light Ring plugged on the rod

- Unscrew the camera head from the camera rod.
- Plug the 5-pin plug of the camera rod into the socket of the Wöhler Light Ring.
- Turn the threaded piece of the camera rod to the right to lock it.



Fig. 54: Camera with light ring

- Plug the camera head connector into the auxiliary lighting connector and rotate until the poles snap into place.
- Turn the threaded piece of the camera rod to the right to lock it.

14.3 Dimming the lighting

When the camera system is switched on, the light ring is switched on and the illumination of the camera head is at the highest level.

The additional illumination can be switched off via the brightness menu of the camera. The LEDs of the camera head can be dimmed in 3 levels and then switched off. It is also possible to switch the LEDs of the camera head off and the additional lighting on.

- Press the menu button to display the camera menu.



Fig. 55: Camera menu when the light ring is switched on

Dimming the LEDs and switching off the additional illumination

LEDs off and additional illumination on



NOTE!

If the light ring is installed, a light bulb appears as the icon for the brightness menu instead of the sun. When the additional lighting is switched on, a + appears next to the light bulb.

- Tap on the bulb icon to select the brightness menu.
- You can now use the slider or joystick to first switch off the light ring and then dim and switch off the LEDs of the camera head in 3 lighting levels.
- Tap and hold the light bulb icon for 1 second to turn off the camera head LEDs and keep the light ring on.

The icon of the light bulb will no longer be filled.

15 Transmission of image files via WLAN

There are 2 ways for a live transmission of images and videos:

1. Access Point: the Wöhler VIS 700 establishes its own WLAN network.
2. Client: You dial into a stationary WLAN network with the Wöhler VIS 700 and your mobile device or laptop.



NOTE

If the wifi function has been enabled on the camera, it will remain enabled even after the camera is switched off and on again.



Fig. 56: system menu with activated WLAN icon

- Open the System menu, see chapter 12.3.



Fig. 57: WLAN icon

- Tap on the WLAN Icon, to activate the WLAN function of the camera system.

The camera will now search for the available networks.



Fig. 58: Selecting the WLAN mode

- You will be prompted to select the WLAN operating mode: "Access Point" or "Client".

15.1 Access Point: Transmission via a VIS 700-WLAN-network

When “Access Point” is selected, the Wöhler VIS 700 builds up its own WLAN network, via which the image data can be transferred directly to a mobile device.

This method allows to view the live images on the Wöhler VIS 700 monitor, while a colleague standing at the other end of the tube, can watch the live videos on his mobile device.

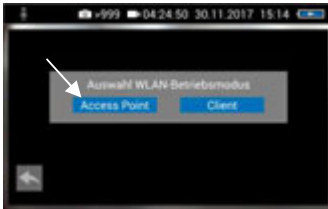


Fig. 59: „AccessPoint“

- Select “Access Point”

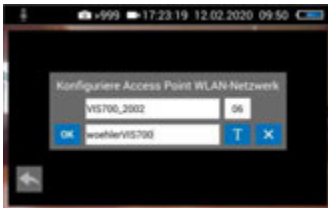


Fig. 60: Network name and password

The display shows the network name of the Wöhler VIS 700 and the password you need to connect your mobile device.

The **network name** is composed as follows:

VIS700_serial number of the camera.

The default **password** is:

woehlerVIS700

15.1.1 Select WLAN channel

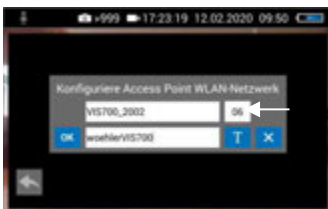


Fig. 61: WLAN-channel marked by arrow

If necessary, it is possible to select the WLAN channel. 13 WLAN channels can be selected.



NOTE!

Default setting: Channel 6

Normally it is not necessary to select another WLAN channel.

- To select another WLAN channel, tap the number field in the top row and select the desired channel.

15.1.2 Change password and networkname

It is possible to change the network name and the password.



NOTE

If you change the network name, you can use your own company name as the network name, for example.

- Please note the following restrictions on the network name and password:

Networkname

Network name:

The input field must not be empty.

The network name must not be longer than 32 characters.

Password

Password:

Valid length: 8 characters - 64 characters .



NOTE!

It is not possible to enter more than 64 characters. If your password has less than 8 characters it will be marked in red.

Permissible characters in each case:

Uppercase and lowercase letters from a to z.

Digits 0 to 9

The following special characters (network name):

_ - ! # \$ % & ' () + , . / : ; < = > ? @ ^ ` { | } ~

The following special characters (password):

_ - ! " # \$ % & ' () * + , . / : ; < = > ? @ [] ^ ` { | } ~

All other characters (letters, special characters, etc.) are not permitted.



NOTE!

Invalid characters cannot be typed during password entry. If the user tries to type an invalid character, nothing happens.

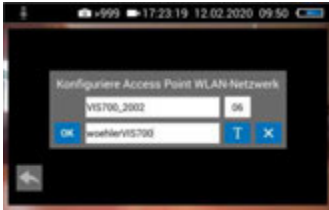


Fig. 62: Changing the password

- To change the network name or password, tap the corresponding field and then tap the text-button T.

A keyboard will appear on screen.

- Make the appropriate changes. (The password must have at least 8 signs).
- Tap OK to save the changes.



NOTE!

If you tap OK or turn off the camera even though the password is too short or no character is entered for the network name, the password or network name will be reset to the last valid character combination.



Fig. 63: WLAN icon in the icon ribbon

Establishing a connection to a mobile device

The WLAN icon is displayed in the icon ribbon of the display until the WLAN function is deactivated.

- To deactivate the WLAN function, tap the WLAN icon again in the System menu.
- To establish a connection between the camera and the mobile device, proceed as follows.
- Access the WLAN settings of your mobile device.
- Select the network **VIS700_[serial number, 4 digits]** or the network name that you have chosen
- Enter the password. The password is **woehlerVIS700** or the password that you have chosen. Note the upper and lower case letters.



NOTE!

As long as your mobile device is connected to the VIS700 network, you will not be able to connect it to the Internet. Therefore, the warning message "Internet not available" appears.

- Wait until the Wöhler VIS 700 establishes contact with your mobile device.

You now have the possibility to view the live video in the Wöhler VIS 700 app on your mobile device.

15.2 Client: Using an existing WLAN network

In the “Client” mode, you dial into an existing network both with the Wöhler VIS 700 and with a mobile device or a WLAN-capable PC or Laptop. This way, live image transmission from the camera to the mobile device/laptop is even possible over a certain distance. This possibility can be interesting in industrial plants, for example.



NOTE!

If the Wöhler VIS 700 was connected to an existing network via the client mode, it will connect to this network again after a restart. If the camera is not within range of this network when rebooting, the WLAN is deactivated on the camera.

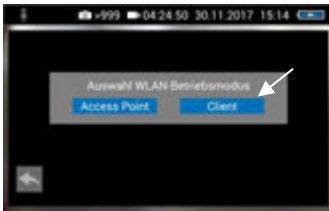


Fig. 64: Client

- Select “Client”.

All available networks will appear in the camera display.

- Select the network.
- Enter the password of your network.
- Confirm with OK.



NOTE

The password will always be saved so that you do not have to enter it the next time you log on to the same network.



Fig. 65: WLAN-Icon in the header

After a successful connection, the WLAN icon will appear in the top bar of the display. The WLAN button in the system menu will be highlighted in blue until the WLAN function is deactivated again.



Fig. 66: System menu with activated WLAN button

Connection to a mobile device or laptop

- Tap the arrow button to exit the system menu.

- Proceed as follows to establish the connection between the camera and the mobile device or laptop.
- Open the WLAN settings of your mobile device.
- Select the same network that you dialed into with the camera.
- Enter the password of your network.

You now have the possibility to view the live video in the Wöhler VIS 700 app on your mobile device.

16 Faults

16.1 Reset



Fig. 67: Reset hole indicated by an arrow

It is possible to rectify certain malfunctions by initiating a reset operation. The reset hole is located on the rear of the monitor next to the camera connection port, see Figure opposite.

- Reset 1: Insert a thin object, for example a straightened paper clip, into the reset hole and press for 2-3 seconds. All buttons should then light up.
- Reset 2: If all buttons do not light up after 2-3 seconds, insert a thin object into the reset hole and press for approx. 15 seconds. All buttons should then light up.



NOTE!

Depending on the type of reset operation the reset time (until all buttons light up) is between 2 and 15 seconds. The reset operation is successful when all buttons light up.

16.2 Possible malfunctions

Fault description	Possible cause	Remedy
Image and video keys flash rapidly when the device is turned on.	Rechargeable battery is flat.	Recharge the battery
Monitor and camera head switched on. No image or stuttering image replay.	Rod is broken.	Return the device for repair.
Camera stops video recording	No video signal, e.g. due to a broken rod	If it occurs repeatedly, return the unit for repair.
Blurred images	Plastic dome scratched.	Replace the plastic dome; glass dome optional.
Camera system dead	Rechargeable battery is flat.	Recharge the battery.
	Device is faulty.	Return the device for repair.

17 Maintenance

17.1 Information on maintenance

Proper operation of the Service Camera requires regular maintenance. The following maintenance works can be done by the user himself.

17.2 Replacing the dome of the camera head



Fig. 68: Fitting the camera dome



NOTE!

The camera head is supplied protected by a plastic dome, which can be replaced if necessary, for example, if it becomes scratched. It is optional to fit this camera head with a glass dome for use in dry working environments.

Attention: Only use the glass dome in dry areas. If the glass breaks in the sewage pipe, the camera head would be destroyed immediately.

Before replacing the dome, the thread of the new dome must be sparingly greased with silicone grease. When replacing the dome, make sure that no grease gets into the camera head and especially its mechanical components.

When fitting the replacement dome, make sure you engage all of the thread to ensure it is properly tightened. Otherwise, it cannot be guaranteed that the camera head is properly sealed, and malfunctions can occur as a result of water and dirt ingress.

17.3 Camera head

- Only use soft, damp cloth to clean the lens. Never use any cleanser.

17.4 Monitor

- Clean the monitor using a soft cloth.

17.5 Cleaning the cable

- Clean the cable with a damp cloth or spray it with water.



Attention!

Make sure that no water gets into the connectors or gets to the monitor.

18 Guaranty and Service

18.1 Guaranty

Each Wöhler VE 700 HD-Cable Camera will be tested in all functions and will leave our factory only after extensive quality control testing.

If used properly, the warranty period for the Wöhler VIS 700 will be 12 month from the date of sale. Not covered by the warranty are consumables, e.g. the plastic dome.

Service by non authorized personnel or making modifications to the analyzer voids any warranty.

18.2 Service

Excellent SERVICE is very important to us. Therefore, of course, we are readily available to assist you after the warranty period ends.

- Send us the Camera and we will repair it and return it to you with our package service.
- Immediate help is provided by our technical staff over the telephone.

19 Declaration of conformity

The manufacturer:

Wöhler Technik GmbH
Wöhler-Platz 1, D-33181 Bad Wünnenberg

declares that the product

product name: HD-Cable Camera Wohler VIS 700

complies with the key safety requirements set down in the guidelines of the Council for the Harmonization of the Legal Requirements of the Member States in relation to the electromagnetic compatibility (2014/53/EU).

The following standards were availed of to evaluate the product in respect of the electromagnetic compatibility:

EN 61326-1:2013 / IEC 61326-1:2012

ETSI EN 301 489-1 V2.1.1 (2017-02)

Draft ETSI EN 301 489-1 V2.2.0 (2017-03)

ETSI EN 301 489-17 V3.1.1 (2017-02)

Draft ETSI EN 301 489-17 V3.2.0 (2017-03)

ETSI EN 300 328 V2.1.1 (2016-11)

ETSI EN 300 330 V2.1.1 (2017-02)

EN 62368-1 :2014+ AC:2015

IEC 62368-1 :2014 (Ed. 2) + Cor.:2015

This device complies with Industry Canada licence-exempt RSS standard(s) and part 15 of the FCC Rules. Operation is subject to the following two conditions: (1) this device may not cause interference, and (2) this device must accept any interference, including interference that may cause undesired operation of the device.

Note: This equipment has been tested and found to comply with the limits for a Class A digital device, pursuant to part 15 of the FCC Rules. These limits are designed to provide reasonable protection against harmful interference when the equipment is operated in a commercial environment. This equipment generates, uses, and can radiate radio frequency energy and, if not installed and used in accordance with the instruction manual,

may cause harmful interference to radio communications. Operation of this equipment in a residential area is likely to cause harmful interference in which case the user will be required to correct the interference at his own expense.

Changes or modifications not expressly approved by the party responsible for compliance could void the user's authority to operate the equipment.

Le présent appareil est conforme aux CNR d'Industrie Canada applicables aux appareils radio exempts de licence. L'exploitation est autorisée aux deux conditions suivantes : (1) l'appareil ne doit pas produire de brouillage, et (2) l'appareil doit accepter tout brouillage radioélectrique subi, même si le brouillage est susceptible d'en compromettre le fonctionnement.

Bad Wünnenberg, 12.01.2024



Dr. Michael Poeplau, Geschäftsführer/Managing Director

