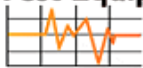


WP 65

## Operating Instructions



**Test Equipment  
Depot**



**1-800-517-8431**

99 Washington Street  
Melrose, MA 02176  
Phone 781-665-1400  
Toll Free 1-800-517-8431

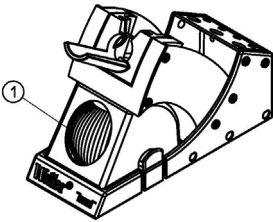


Visit us at [www.TestEquipmentDepot.com](http://www.TestEquipmentDepot.com)

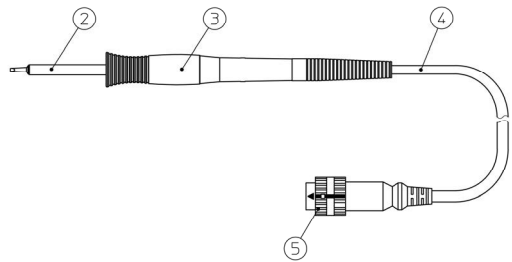
## WP 65 Hardware Overview

Always place the soldering tool in the safety rest while not in use.

WDH 10



WP 65



4D9R1039

1. Cleaning element
  2. Soldering tip
  3. Barrel
  4. Heat-resistant antistatic silicon cable
  5. Lockable connector plug
-

## Table of Contents

1	About these instructions .....	3
2	For your safety .....	3
3	Included in delivery .....	5
4	Device description .....	5
5	Commissioning the device .....	6
6	Replacing the WP 65 soldering tips .....	6
7	Accessories .....	7
8	Disposal .....	8
9	Warranty .....	8

## 1 About these instructions

Thank you for the confidence you have shown in buying the Weller WP 65 soldering iron. The device has been manufactured in accordance with the most rigorous quality standards, which ensure that it operates perfectly.

These instructions contain important information which will help you to start up, operate and service the WP 65 soldering iron safely and correctly as well as to eliminate simple faults or malfunctions yourselves.

- ▷ Read these instructions and the accompanying safety information carefully before starting up the device and starting work with the WP 65 soldering iron.
- ▷ Keep these instructions in a safe place and so that they are easily accessible to all users.

### 1.1 Directives taken into consideration

The Weller WP 65 soldering iron conforms to the specifications of the EC Declaration of Conformity as defined by Directives 2004/108/EC, 2006/95/EC and 2011/65/EU (RoHS).

### 1.2 Applicable documents

- Operating instructions for your supply unit
- Operating instructions for WP 65

## 2 For your safety

- The WP 65 soldering iron has been manufactured in accordance with the current state of the art and recognised safety rules and regulations. There is nevertheless the risk of personal injury and damage to property if you fail to observe the safety information set out in the accompanying booklet and the warnings given in these instructions.

- Always pass on the WP 65 soldering iron to third parties together with these operating instructions.
- The manufacturer accepts no liability for improper use of the tool or for unauthorised modifications.

## 2.1 Please observe the following guidelines:

### General information

- Always place the WP 65 soldering iron in the intended safety rest.
- Remove all inflammable articles from around the hot soldering iron.
- Always wear suitable protective clothing when using the WP 65.
- Never leave a hot WP 65 unattended.
- Do not work on electrically live parts.
- Antistatic plastics are provided with conductive fillers to prevent the build-up of static charge. This also reduces the insulating properties of the plastic.  
Do not work on electrically live parts.
- Always wear eye protection when working with soldering and desoldering applications.
- Read and follow the operating instructions for the Weller supply unit.

### Handling soldering/desoldering tips

- Do not place or leave hot soldering/desoldering tips on the worktop or on plastic surfaces.
- Wet the tinned soldering/desoldering tips with solder once they have heated up in order to remove oxide layers that form during storage or contamination from the soldering/desoldering tips.
- Ensure the soldering/desoldering tips are well wetted during intervals between soldering and desoldering and prior to storage of the device.
- Do not use aggressive fluxing agents.
- Always make sure that the soldering/desoldering tips are properly seated.
- Select the lowest possible working temperature.
- Select the largest possible soldering/desoldering tip shape for the application (roughly as large as the soldering pad).
- Wet the soldering/desoldering tips well to ensure efficient heat transfer between the soldering/desoldering tips and the soldering spot.
- Switch off the system if you do not intend to use the soldering/desoldering tool for prolonged periods.
- Wet the tips before placing the soldering/desoldering tool in the safety rest.
- Apply the solder directly at the soldering point, not on the soldering/desoldering tips.
- Do not apply excessive force to the soldering/desoldering tips.
- Always make sure that the soldering iron is placed properly in the safety rest.

## 2.2 Intended use

Use the WP 65 soldering iron exclusively for the purpose indicated in the operating instructions of releasing, accommodating and depositing electronic components under the conditions specified herein. Intended use of the WP 65 soldering iron also includes the requirement that you

- adhere to these instructions,
- observe all other accompanying documents,
- comply with national accident prevention guidelines applicable at the place of use.

The manufacturer accepts no liability for any damage resulting from failure to use the device in compliance with these operating instructions or unauthorised modifications to the device.

## 3 Included in delivery

<b>WP 65 packed</b>	<b>T0052921599</b>
– WP 65 soldering iron	T0052921599
– XNT A soldering tip Ø 1.6 mm	T0054485100
– Operating Instructions for WP 65	

<b>Also included in WP 65 soldering set</b>	<b>T0052921699</b>
– WDH 10 switching holder	T0051512199
– Sole plate connector	T0058703153
– Operating instructions of WDC 2	

## 4 Device description

### 4.1 Soldering iron WP 65

The WP 65 soldering iron is characterised by very fast and precise achievement of the soldering tip temperature. A highly powerful 65 W heater element provides excellent dynamic performance. Thanks to its slim-line design and the extremely short distance from the handle to the tip, this soldering iron can be used for general purposes from precision soldering to high-temperature soldering. The WP 65 can only be switched to Standby or OFF mode using an optional switching holder. For directions for setting the standby temperature and the switching times, please refer to the operating instructions of the supply unit in use.

## 4.2 Technical data

---

Temperature range	100°C - 450°C (212°F - 850°F)
Tool cable	Silicone rubber, heat resistant
Heating element	Integrated heating wire element
Temperature sensor	Platinum sensor
Heating output	65 W
Voltage (heater)	24 V
Heat-up time	(approx.) 7s (50°C to 380°C) (120°F to 660°F)
Connection	6 pin connector, polarity protected with lock
Weight	30 g incl. cordless tip
Tip type	XNT series
Supply unit	Weller stations

---

## 5 Commissioning the device

### WARNING! Risk of burns



The soldering tips of soldering irons become very hot during soldering and desoldering processes.

There is a risk of burns from touching the tips.

- ▷ Do not touch the hot soldering tips and keep them away from inflammable objects.

- 
1. Carefully unpack the WP 65 soldering iron.
  2. Place the soldering iron into safety rest WDH 10.
  3. Insert the connecting plug (5) into the power supply socket and lock it by turning it clockwise.
  4. Check to make sure that the mains voltage matches the voltage specified on the rating plate of the supply unit.
  5. Switch on the supply unit and set the required temperature.
  6. If the tool has not reached the required temperature. Wet the soldering tip with solder.

## 6 Replacing the WP 65 soldering tips

### WARNING! Risk of burns



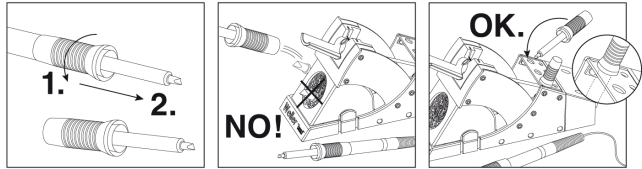
The soldering tip becomes hot during soldering and desoldering processes.

There is a risk of burns from touching the soldering tip.

- ▷ The soldering tool must be switched off and stand at least 3 min. in the safety rest (WDH 10) until the soldering tip has cooled off. Only replace the soldering tips when they are cold.
-

### Replacing a used soldering tip

1. Place the soldering tool in the WDH 10 safety rest.
2. Switch off the supply unit.
3. Wait three minutes until the soldering tip has cooled off.
4. Hold the soldering iron with the tip angled slightly downwards. Hold the soldering iron by the rear handle and unscrew the barrel (3) by turning anticlockwise. Pull off the barrel (3) forwards. The soldering tip (2) is now loose in the barrel (3).



**Note** Do not set the soldering tip / measuring down or allow it to cool on the metal wool or plastic surfaces. When using more than one type of soldering tip, it is recommended that the soldering tip (2) and the barrel (3) be used together in the changer system (see 3, figure above).

Keep the heat transfer surfaces of the soldering tip and heating element clean. The heating element must not come into contact with soldering tin.

### Inserting a new soldering tip

5. Place the soldering tip into the tip receptacle with the tip pointing forwards. Push the tip receptacle together with the soldering tip over the heating element and rotate clockwise to tighten.
6. Switch on the supply unit and set the required temperature.

## 7 Accessories

### 7.1 XNT soldering tips for the WP 65 soldering iron

See the table XNT soldering tips for WP 65 soldering iron in the section in the back.

### 7.2 Replacement parts and accessories for WP 65

Order no.	Description
T0052921199	WP 65 soldering iron
T0051512199	WDH 10 safety rest
T0051516199	WDH 10T safety rest
T0051384199	Metal wool for cleaning element for WDC 2



## 8 Disposal

Dispose of replaced equipment parts, filters or old devices in accordance with the rules and regulations applicable in your country.

## 9 Warranty

Claims by the buyer for physical defects are time-barred after a period of one year from delivery to the buyer. This does not apply to claims by the buyer for indemnification in accordance with §§ 478, 479 BGB (German Federal Law Gazette).

We shall only be liable for claims arising from a warranty furnished by us if the quality or durability warranty has been furnished by use in writing and using the term "Warranty".

### **In addition, for the USA and Canada:**

Weller Tools warrants to the original purchaser and any subsequent owner ("Buyer") that Weller soldering and desoldering products will be free from defects in material and workmanship for a period of one year from date of purchase, provided that no warranty is made with respect to products which have been altered, subjected to abuse or improperly used, installed or repaired. Use of non-Weller Tools components will void this warranty if a non-Weller Tools component is defective (or is the source of the defect). Weller Tools will repair or replace products found to be defective not caused by a part, component or accessory manufactured by another company, during the warranty period. Contact Weller Tools GmbH with dated proof of purchase and return to Apex Tool Group. All costs of transportation and reinstallation shall be borne by the Buyer.

IN NO EVENT SHALL WELLER TOOLS BE LIABLE FOR INCIDENTAL OR CONSEQUENTIAL DAMAGES. WELLER TOOLS LIABILITY FOR ANY CLAIMS ARISING OUT OF THIS WARRANTY SHALL NOT EXCEED THE PURCHASE PRICE OF THE PRODUCT.

THE PERIOD OF ALL IMPLIED WARRANTIES APPLICABLE TO THIS PRODUCT INCLUDING ANY IMPLIED WARRANTY OF MERCHANTABILITY OR FITNESS, OR FITNESS FOR A PARTICULAR PURPOSE IS LIMITED TO 12 MONTHS FROM THE DATE OF PURCHASE BY THE USER.

Some states do not allow the exclusion or limitation of incidental or consequential damages, so the above limitation or exclusion may not apply to you. Some states do not allow limitation on how long an implied warranty lasts, so the above limitation may not apply to you. This warranty gives you specific legal rights, and you may also have other rights, which vary from state to state.

**Subject to technical alterations and amendments!**

**Updated operating instructions are available for download.**



99 Washington Street  
Melrose, MA 02176  
Phone 781-665-1400  
Toll Free 1-800-517-8431



Visit us at [www.TestEquipmentDepot.com](http://www.TestEquipmentDepot.com)