



# Portable Bench Multimeter

Small size, diverse functions, good-looking and powerful

Test Equipment Depot - 800.517.8431 - 5 Commonwealth Ave, MA 01801 - TestEquipmentDepot.com



Auto  
Range

True  
RMS

Hz  
Frequency  
Measurement

Data  
Hold

Math

TEMP  
Temperature  
Measurement



## Main features

- 3.7-inch high-resolution LCD, providing a clear display
- Display max 55,000 counts ( $> 4 \frac{4}{5}$  digits), DC voltage accuracy up to 0.05%
- Multiple measurement functions: DC/AC Voltage, DC/AC Current, resistance, capacitance measurement, continuity test, diode test, temperature measurement, AC and frequency (AC + Hz) measurement, MAX/MIN/average measurement, relative measurement (REL\_%)
- Reading rates up to 65 readings per second
- AC True RMS measurement, measurement bandwidth: 20 Hz - 1kHz
- Manual or auto record the measured data into internal memory, and displayed in table
- SCPI supported, remote control the multimeter through PC software via USB port
- AC power supply for continuous use, maintenance-free

# Ultra-light and portable



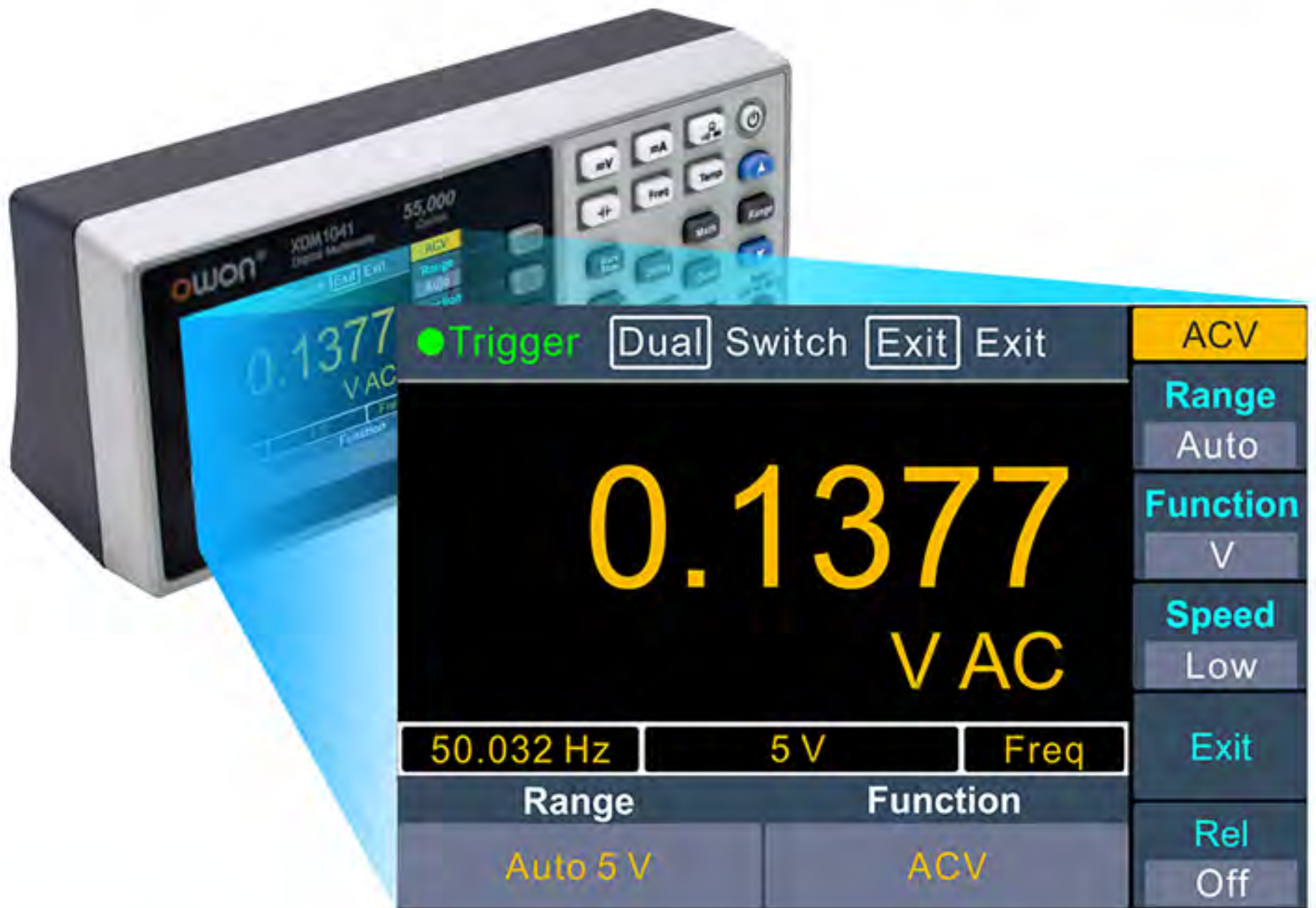
Small size,  
weight only 0.45 kg



Easy to carry, saving working space.

# Large LCD Display

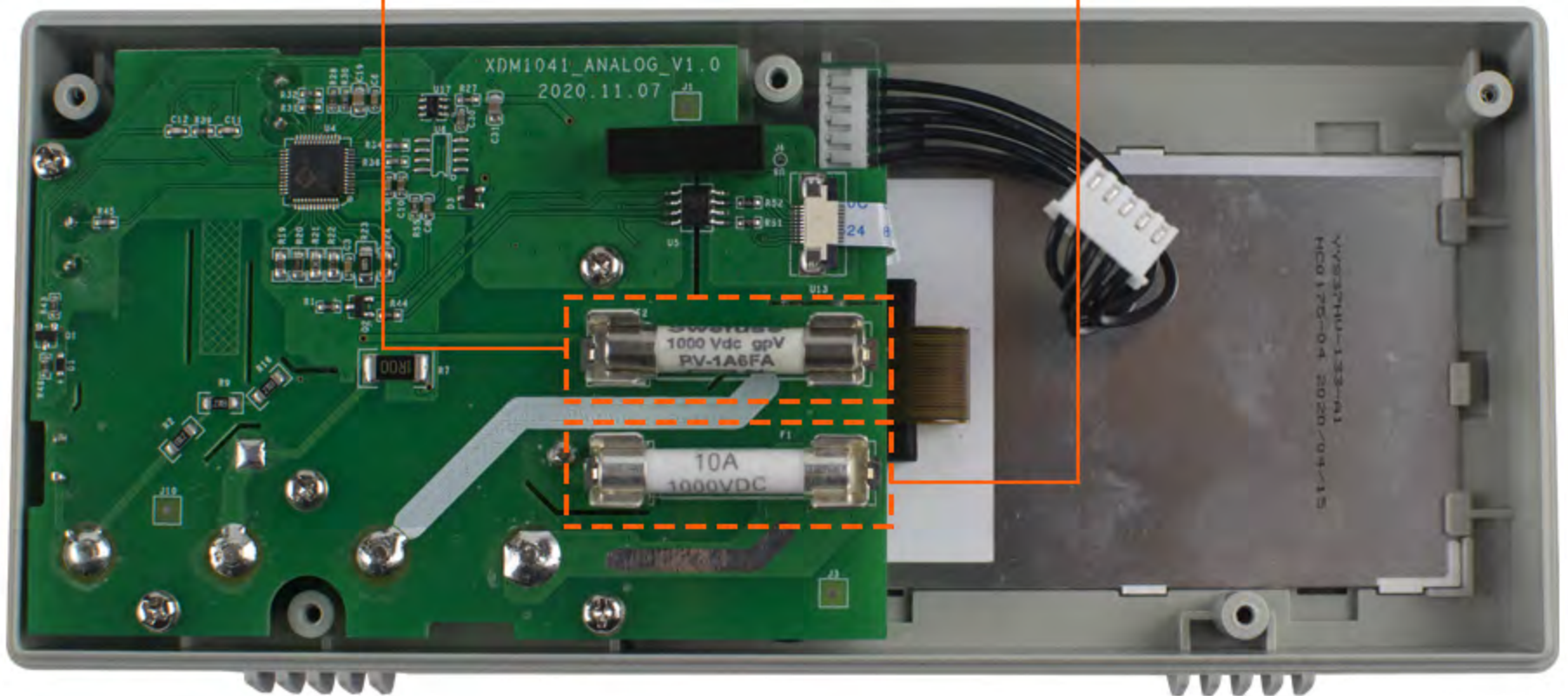
clear and concise readings



3.7-inch High-resolution LCD Display

480 × 320 pixels

# High safety rating

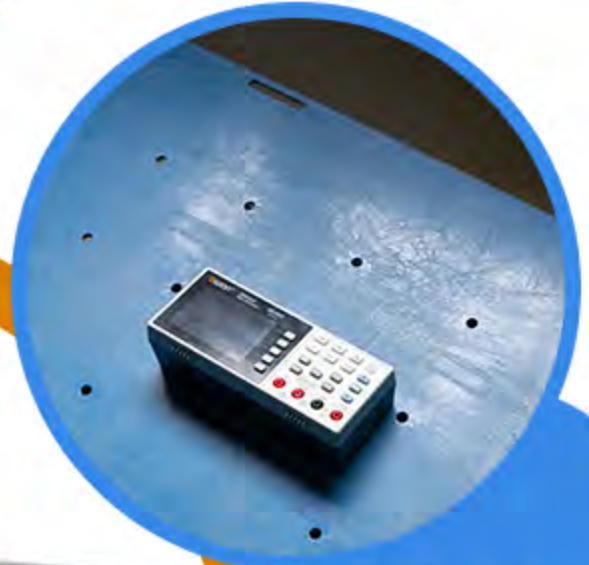


# Strict testing, quality assurance, passed CE certification

High-low  
temperature  
test



Vibration  
test



Salt spray  
test



Automatic  
calibration



# — Function Details —

● Trigger			Auto
NO	MODE	VALUE	Point
1	DCV	-00.362mVDC	1000
2	DCV	-00.362mVDC	Interval
3	DCV	-00.362mVDC	0000.015
4	DCV	-00.362mVDC	Start
5	DCV	-00.362mVDC	
6	DCV	-00.362mVDC	
7	DCV	-00.362mVDC	
8	DCV	-00.362mVDC	
9	DCV	-00.362mVDC	
Range		Function	Back
Auto 50 mV		DCV	

## Data Record Function

Supports manual or auto recording 1000 data points to the internal memory, auto recording time interval can be set from 15 ms to 9999 s

## Math

The multimeter can do calculations for you (relative, max, min, average, dBm), saving time and effort

● Trigger		dB/dBm
103.99 dBm		Mode
		On
		Function
		dBm
		Rel R
		50Ω
Range		Function
Auto 5 V		DCV
		Back

● Trigger		MAX/MIN
-00.353 mV DC		Display
		On
		Clear
MAX	MIN	Average
-00.340mV	-00.357mV	-00.352mV
Range		Function
Auto 50 mV		DCV
		Back

## Dual display supported

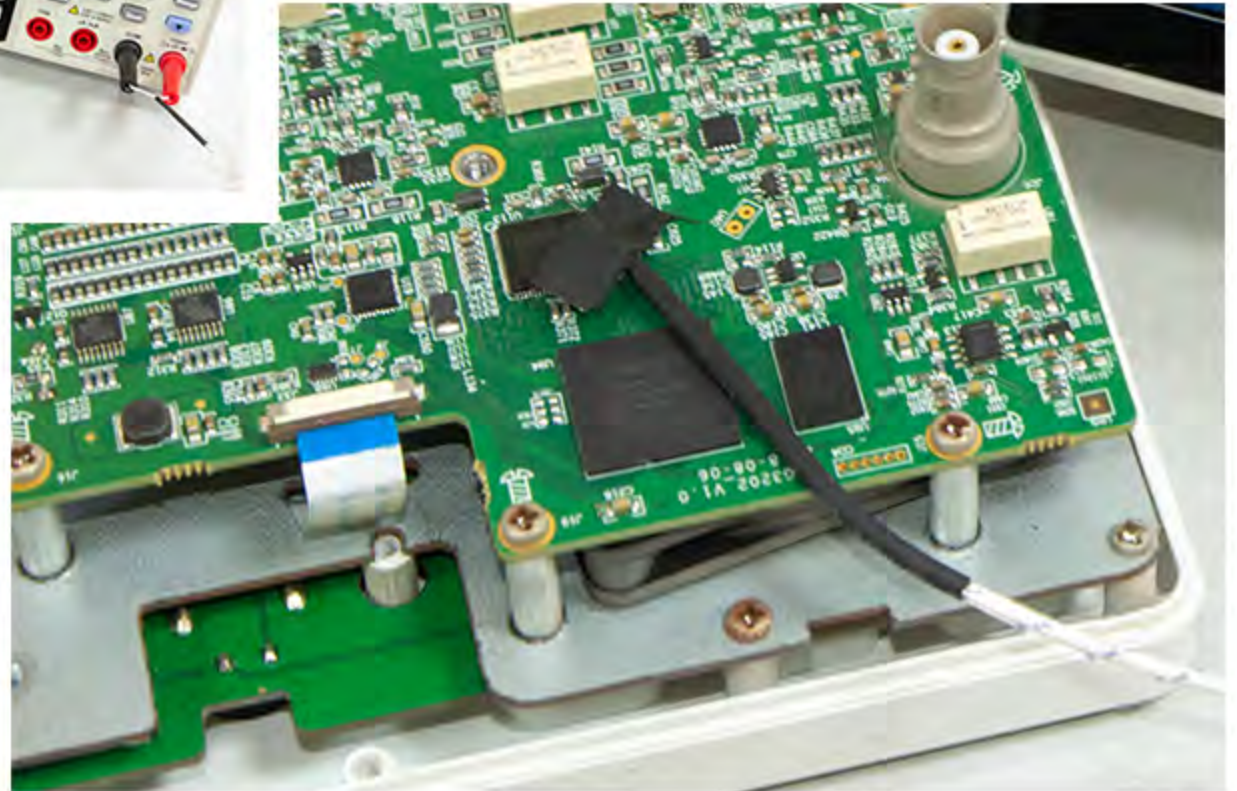
Supports dual display of AC voltage (or current) and frequency measurements

● Trigger		ACV
Dual Switch		Range
Exit		Auto
0.1377 V AC		Function
		V
		Speed
		Low
50.032 Hz	5 V	Freq
Range		Function
Auto 5 V		ACV
		Rel
		Off

## Temperature measurement



Support K-type thermocouple, PT100.  
The temperature display supports  
°C (Celsius), °F (Fahrenheit), K (Kelvin).  
Built-in thermocouple cold junction compensation.

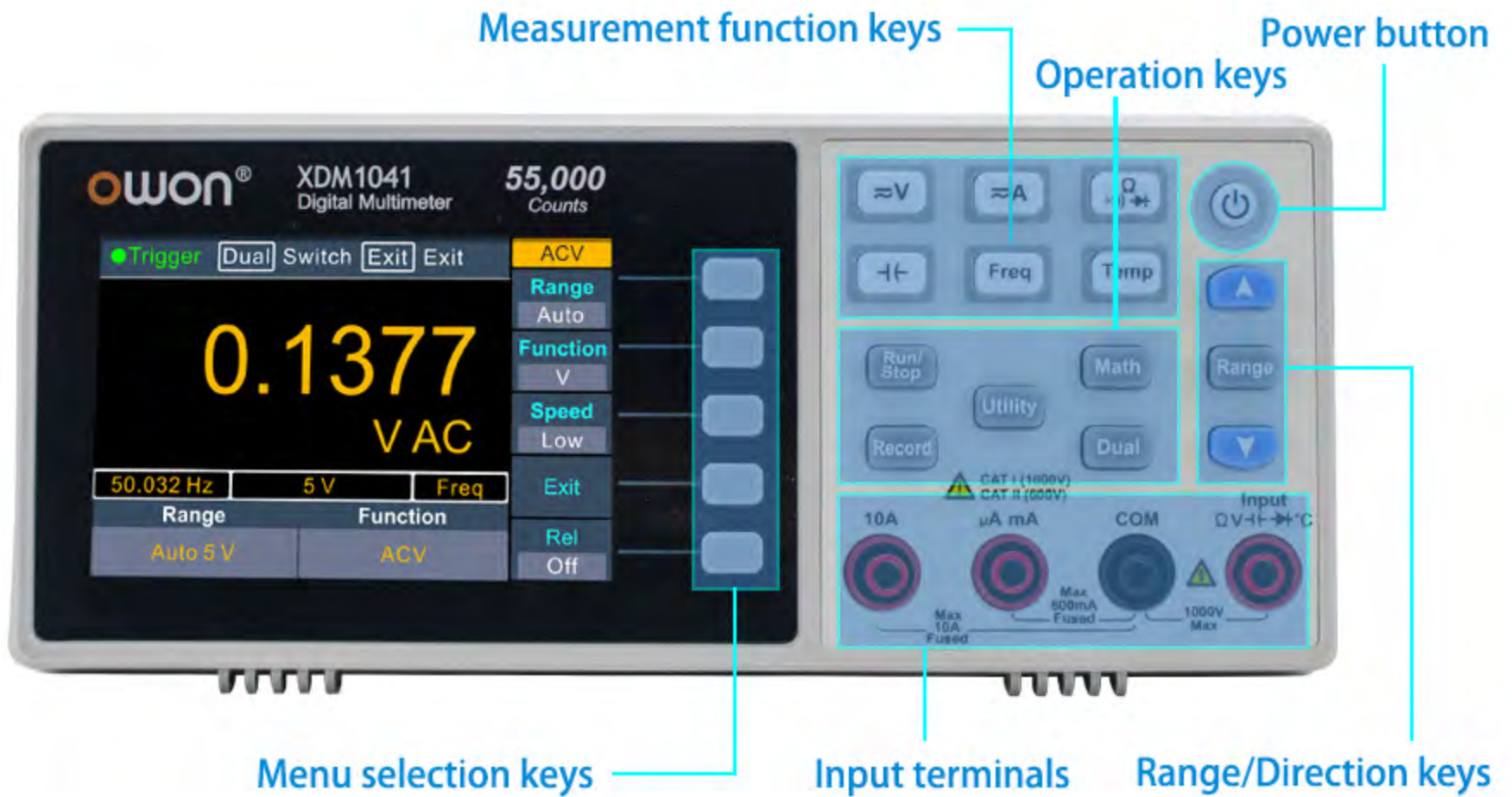


## Communicate with computer via USB port

Through the PC software, you can read the measurements, remote control the multimeter, record the data to a table, do statistics and limit calculations. SCPI supported.







Power connector, accepts AC input voltage of 90 V – 240 V for worldwide usage



	Measurement Range	Resolution	Accuracy: $\pm$ (% of reading + LSB)
DC Voltage	50.000 mV	0.001 mV	0.1% + 10
	500.00 mV	0.01 mV	0.05% + 5
	5.0000 V	0.0001 V	0.05% + 5
	50.000 V	0.001 V	0.05% + 5
	500.00 V	0.01 V	0.1% + 5
	1000.0 V	0.1 V	0.1% + 10
True RMS AC Voltage	500 mV – 750 V	20 Hz – 45 Hz	1% + 30
		45 Hz – 65 Hz	0.5% + 30
		65 Hz – 1 kHz	0.7% + 30
DC Current	500 $\mu$ A	0.01 $\mu$ A	0.15% + 20
	5000 $\mu$ A	0.1 $\mu$ A	0.15% + 10
	50 mA	0.001 mA	0.15% + 20
	500 mA	0.01 mA	0.15% + 10
	5 A	0.0001 A	0.5% + 10
	10 A	0.001 A	0.5% + 10
True RMS AC Current	500 $\mu$ A – 500 mA	/	0.5% + 20
	5 A – 10 A		1.5% + 20
Resistance	500 $\Omega$	0.01 $\Omega$	0.15% + 10
	5 k $\Omega$	0.0001 k $\Omega$	0.15% + 5
	50 k $\Omega$	0.001 k $\Omega$	0.15% + 5
	500 k $\Omega$	0.01 k $\Omega$	0.15% + 5
	5 M $\Omega$	0.0001 M $\Omega$	0.3% + 5
	50 M $\Omega$	0.001 M $\Omega$	1% + 10
	Measurement Range	Resolution	Accuracy: $\pm$ (% of reading + LSB)
Diode	3.0000 V	0.0001 V	1% + 10
Continuity	1000 $\Omega$	0.1 $\Omega$	Adjustable threshold
Frequency	10.000 Hz – 60 MHz	/	$\pm$ (0.2% + 10)
Capacitance	50 nF – 500 $\mu$ F	/	2.5% + 10
	5 mF – 50 mF	0.1 $\Omega$	5% + 10
Temperature	K type, PT100		
Max Display	55,000 counts		
Data-logging Function			
Logging Interval	15 mS – 9999.999 S		
Logging Length	1,000 points		
General			
Display Screen	3.7-inch TFT LCD with resolution 480*320		
Port	USB port		
Dimensions (W×H×D)	200 x 86.5 x 64 (mm)		
Device Weight	Approx. 0.45 kg		

The above parameters are subject to change without further notice, please refer to the official website update.

# PRODUCT ACCESSORY



- 1** XDM1041   **2** Power Cord   **3** Fuse   **4** Multimeter Lead   **5** Alligator Clip  
**6** USB data cable   **7** Quick Guide